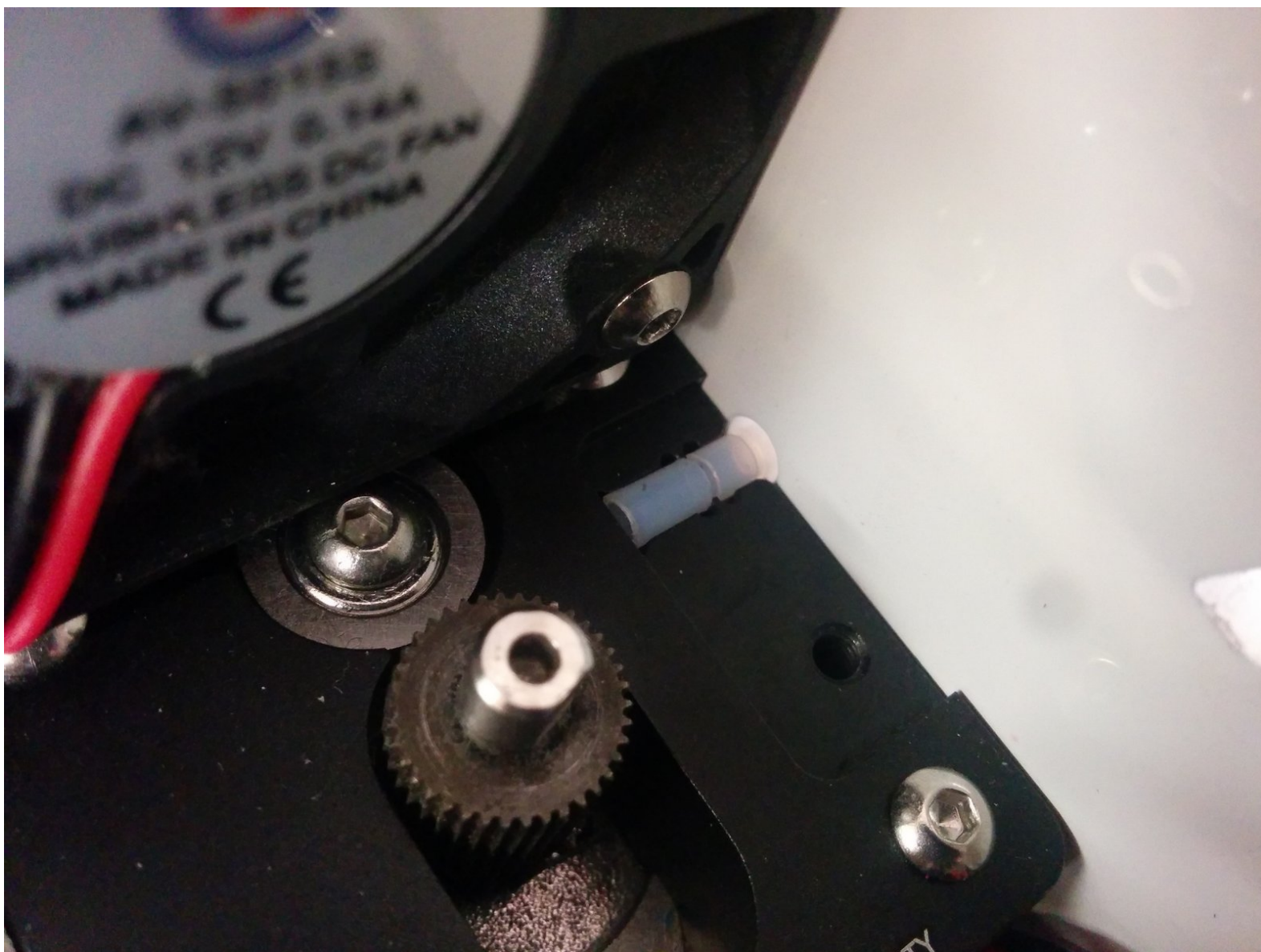




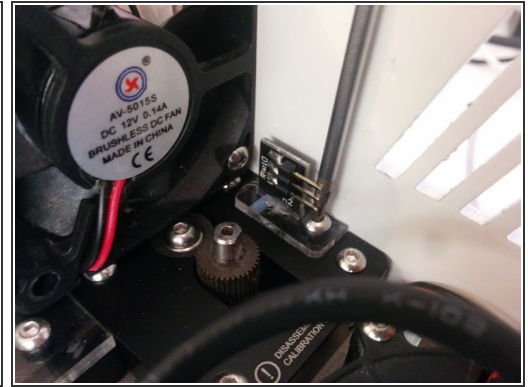
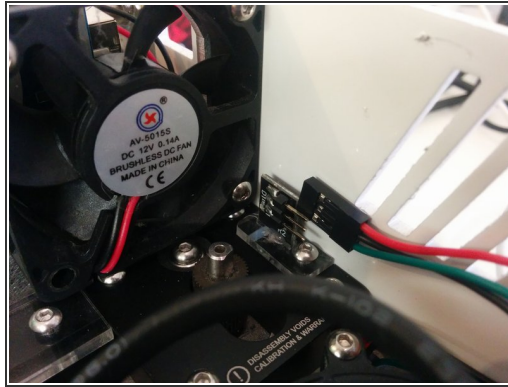
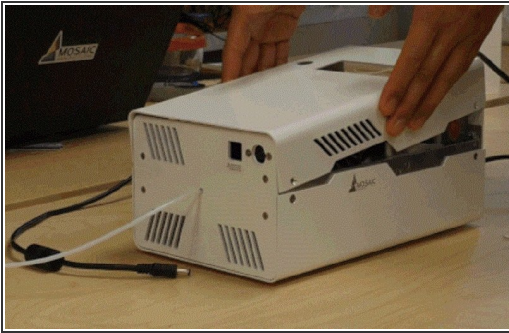
Replacing the Outgoing Teflon Tube

These are instructions to replace Palette's outgoing Teflon tube.

Written By: Mosaic Support

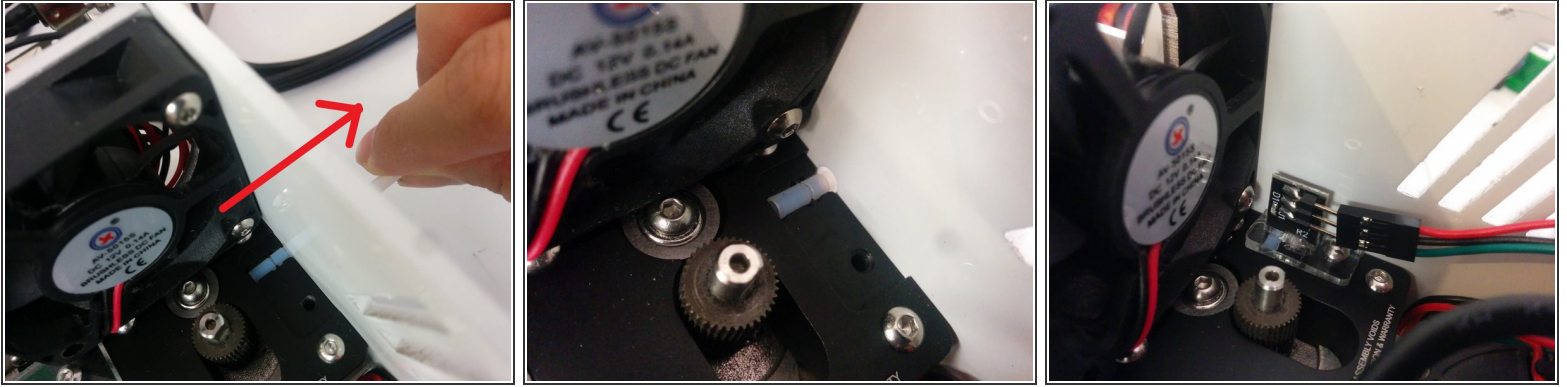


Step 1 — Access Outgoing tube



- Make sure Palette is not plugged into a computer or its power supply.
- Remove Palette's top. Use the 2.0 mm hex key (the smaller of the two hex keys in your Tool Kit) to remove the four bolts holding on Palette's top and remove.
- Use pliers, tweezers, or your fingers to remove the wires attached to the three prongs of the hall sensor shown below.
- Use the same 2.0 mm hex key to unscrew and remove the bolt on the acrylic piece below. Use pliers or tweezers to remove the bolt if needed.

Step 2



- Remove the acrylic piece and remove the outgoing Teflon tube by pulling it away from the Palette.
- Feed the new outgoing Teflon tube into position. It should sit flat and the grooves of the tube will align with the grooves that hold it in place. Replace the acrylic piece on the drive and re-screw in place.

⚠ DO NOT OVERTIGHTEN THE BOLT! It should be snug, but overtightening it will crack the acrylic.

- Carefully plug the wire back into the hall sensor. The red wire should be on top and the green wire should be on the bottom.

If you have any additional questions, please send us a message at support@mosaicmfg.com