



Add a style profile

This guide will take you through the steps of adding a style profile in CANVAS.

Written By: Mosaic Support

CANVAS

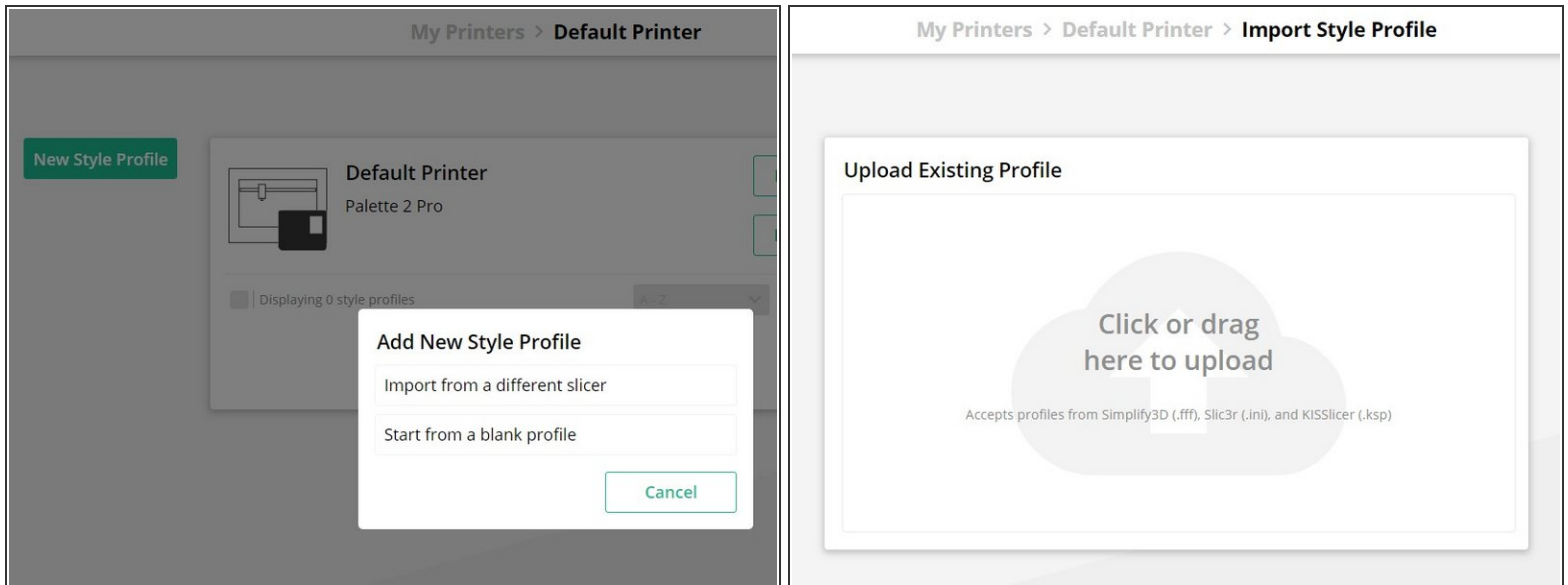
INTRODUCTION

You can add a style profile when you're setting up a printer profile for the first time, or after the printer profile has been created.

There are two methods of adding a style profile to a printer profile:

- Import styles from a different slicer
- Start a blank style profile

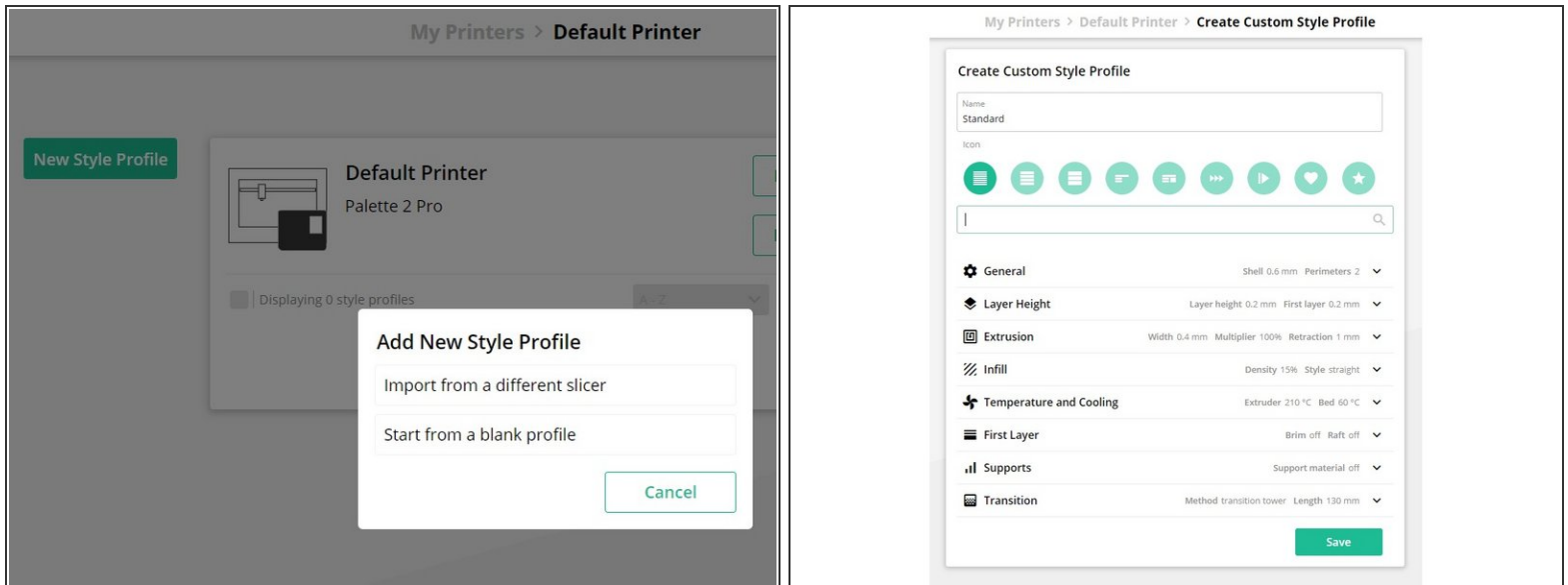
Step 1 — Import Styles from a Different Slicer




i Importing a style profile will allow you to use settings from another slicer. It's one of the easiest ways to get slicing if you already have some tried and tested settings!

- Go to **Printer Profiles** and double click the printer you want to add a new style profile to.
- Click **Add a New Style Profile**.
- Click **Import from a Different Slicer**.
- Upload your printer profile file.
- Once you've uploaded the file, confirm that the printer settings are correct, and click **Save**.

Step 2 — Start from a Blank Style Profile



 A blank style profile will have no preset settings and will require you to enter and modify different parameters.

- Go to **Printer Profiles** and double click the printer you want to add a new style profile to.
- Click **New Style Profile**.
- Click **Start from Blank Profile**.
- Enter your profile name and enter desired settings, click **Save**.

If you have any additional questions, please send us a message at support@mosaicmfg.com.