



# Webcam Package for CANVAS Hub S

The following webcam package plugin can be used with the CANVAS Hub S.

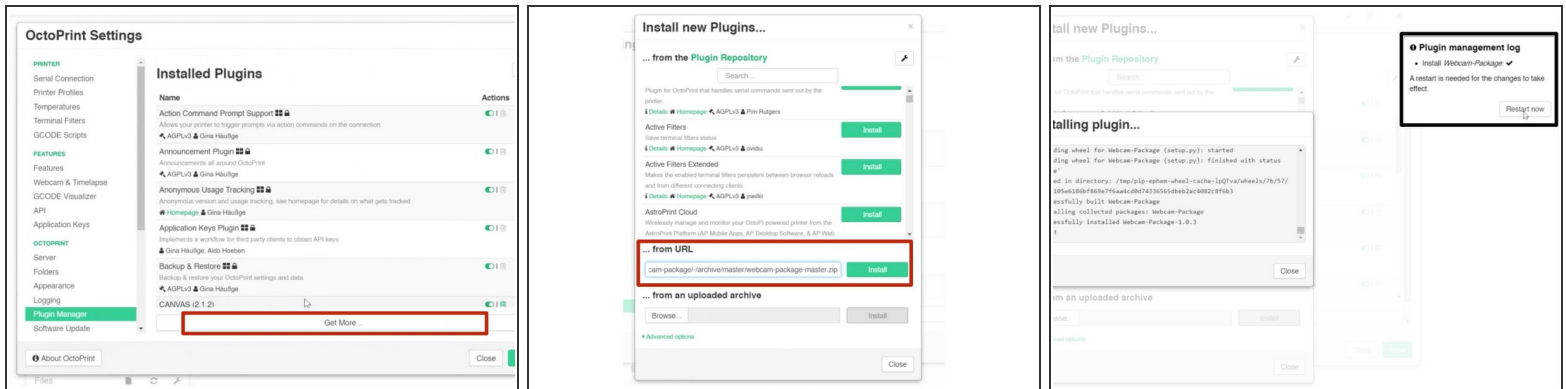
Written By: Mosaic Support



## INTRODUCTION

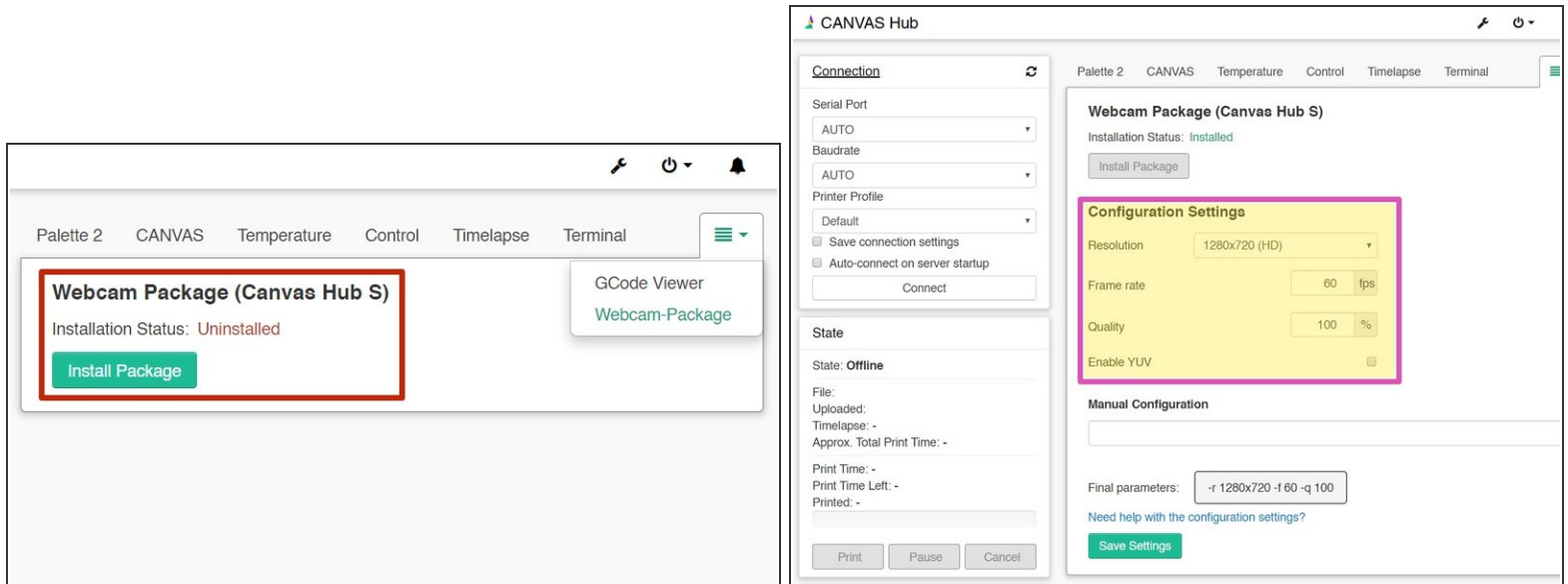
The following webcam package plugin can be used with CANVAS Hub S.

## Step 1 — Install Plugin



- Use the to install the plugin (if it is not already installed): <https://gitlab.com/mosaic-mfg/webcam-package>
- Go to *Settings > Plugin Manager > Get More > ...from URL*.
- Restart OctoPrint once the plugin is successfully installed.

## Step 2 — Plug In Your Webcam



- Go to the Webcam Package tab, and click **Install Package**.
- ⓘ This may take between 5-15 minutes.
- Plug in your webcam and restart the CANVAS Hub by going to *System > Restart OctoPrint*.
- Return to the Webcam Package tab, you should now see **Configuration Settings** available. Please refer to [this guide](#) on compatible webcams for OctoPrint.
- Once you identify your webcam, enter its resolution settings, desired frame rate, and quality into the configuration. Please save your settings.
- Go to the Control tab, here you should now see the output for the webcam display.

## Step 3 — Troubleshooting



- **Settings are Overridden**

- Manual configuration is available for advanced camera settings. Entering a manual configuration into the field will override the configuration settings outlined in step 4.

- **Webcam Stream is Not Displaying in Control Tab**

- Check that the configuration settings match the webcam, and remember to click **Save Settings** in the Webcam Package plugin.
- Check that [the webcam](#) is connected to CANVAS Hub S.
- Reboot CANVAS Hub by going to *System > Reboot*, or hard refresh the web page.

- **Installing OctoLapse**

- To install OctoLapse, please follow the steps [here](#).

If you have any additional questions, please send us a message at [support@mosaicmfg.com](mailto:support@mosaicmfg.com).