



# Setup Guide: DIY Canvas Hub (OctoPi + CANVAS and P2 Plugins)

The following steps will walk you through how to create your own Canvas Hub.

Written By: Mosaic Support

OctoPrint

Connection

Serial Port: 

AUTO

Baudrate: 

AUTO

Printer Profile: 

Default

Save connection settings

Auto-connect on server startup

Connect

State

State: Offline

File:

Timelapse: -

Approx. Total Print Time: -

Print Time: -

Print Time Left: -

Printed: -

Print

Pause

Cancel

Files

Temperature

Control

GCode Viewer

Terminal

Timelapse

300°C

250°C

200°C

150°C

100°C

50°C

Actual T: -

Target T: -

Actual Bed: -

Target Bed: -

	Actual	Target	Offset
Tool	off	<div>-</div> off °C <div>+</div> <div>✓</div>	0 °C <div>✎</div> <div>🗑</div>
Bed	off	<div>-</div> off °C <div>+</div> <div>✓</div>	0 °C <div>✎</div> <div>🗑</div>

Update Available

There are updates available for the following components:

✓

 OctoPrint: 1.3.9 (stable) [Release Notes](#)

Those components marked with ✓ can be updated directly.

Ignore

Update now

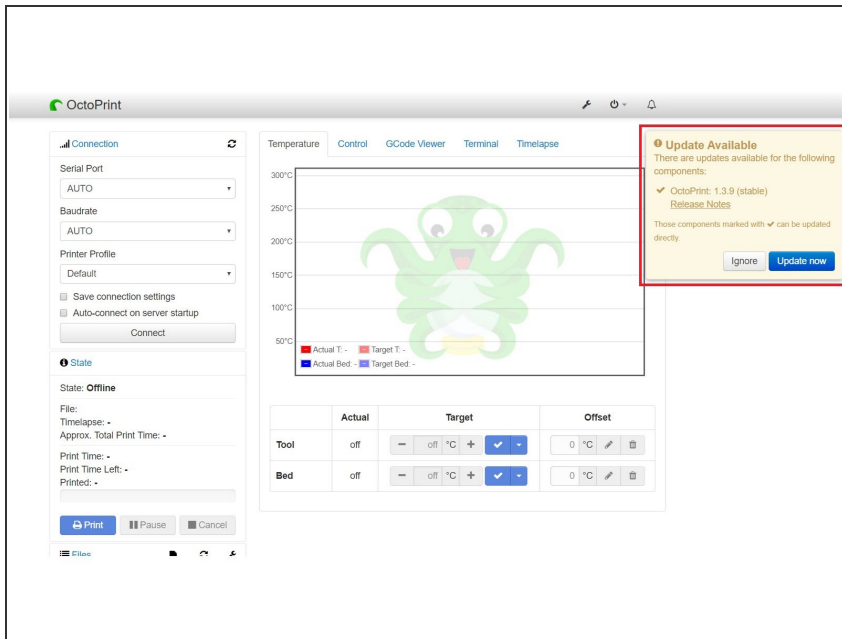
## INTRODUCTION

If you are building your own Canvas Hub, you'll be able to connect your printer and Palette via OctoPrint to control, load, and start your print files. The following steps will walk you through how to install the necessary plugins if you already have a Raspberry Pi with OctoPrint and would like to create your own Canvas Hub.


This setup guide is intended for users with an existing [OctoPi](#) and connected to your printer. If you do not have OctoPrint setup we would advise that you visit <https://octoprint.org/> to setup your own OctoPrint server and then continue with this guide.

If you choose to use our free OctoPrint Canvas plugin you will have the same abilities as Canvas Hub users to control, load and start prints with your Palette 2 (Pro) (S) and printer.

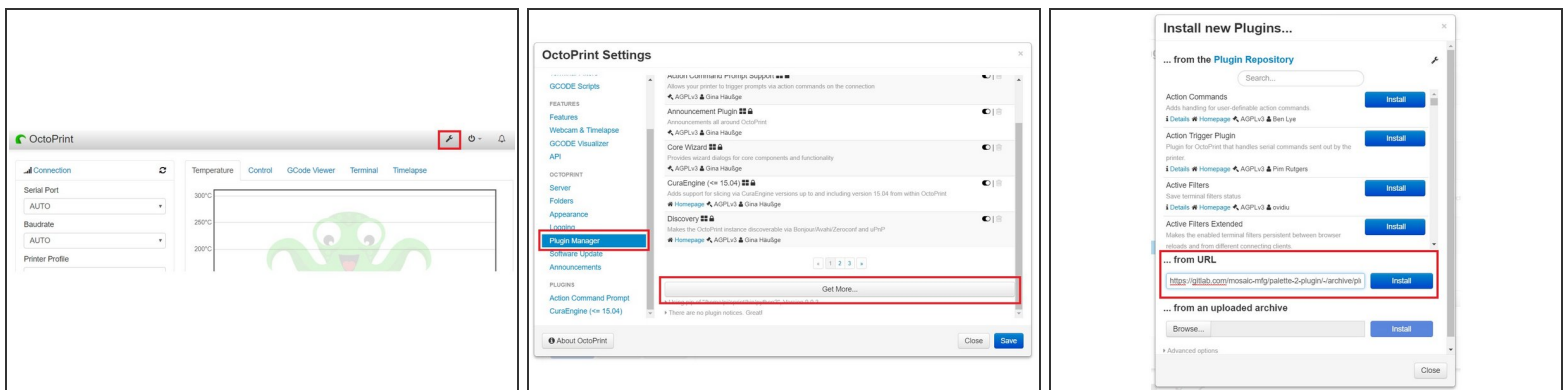
## Step 1 — Launch and Update OctoPrint



- To launch Octoprint, enter *octopi.local*, or copy and paste the [IP address](#) for the Raspberry Pi into the web browser.

-  Our plugins are compatible with Octoprint 1.7.3 and previous releases.

## Step 2 — Install New Plugins



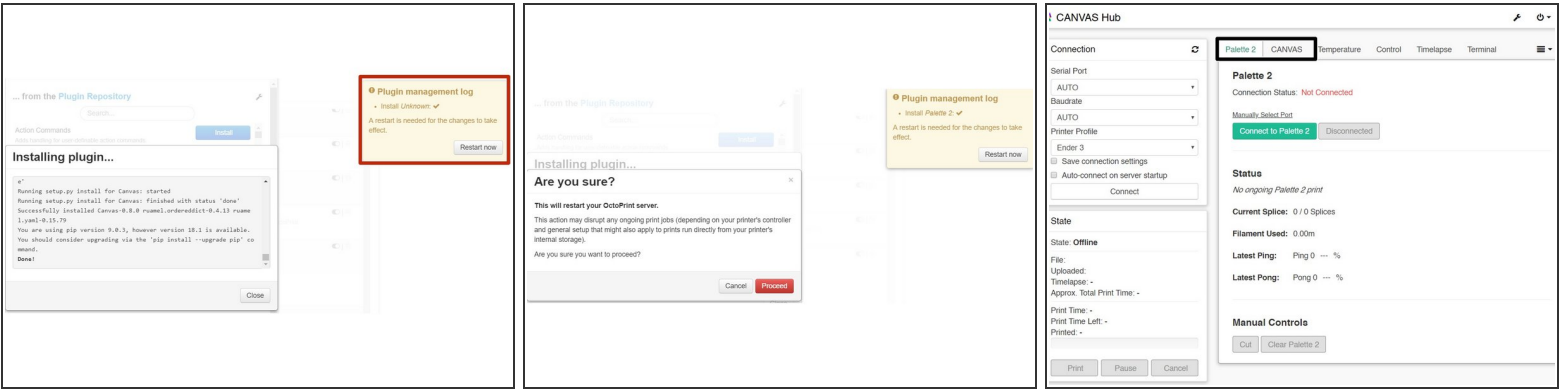
- Once updated, select the **Settings** icon.
- Once in the Settings window, select **Plugin Manager**. Scroll to the bottom of the page and select **Get More....**
- You'll enter the **Install new Plugins...** screen. From here, you'll be able to install a plugin from URL.

## Step 3 — Install Plugins



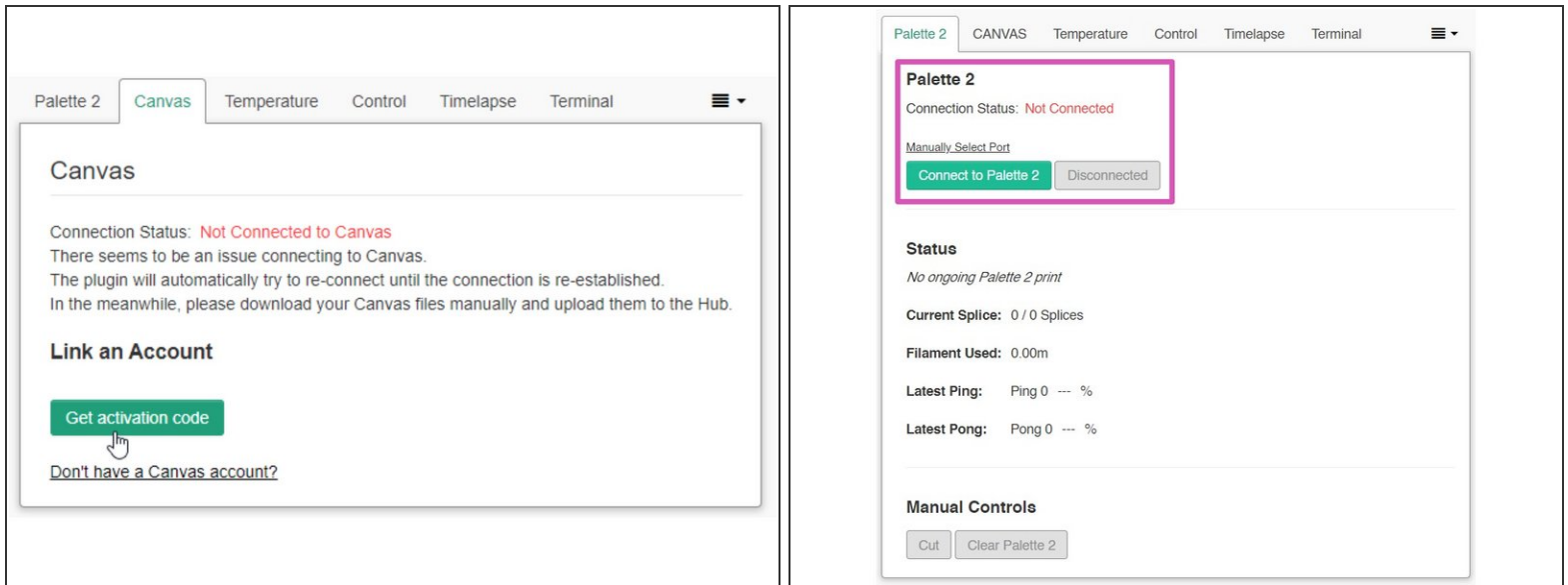
- Copy and paste the following file destinations URLs in the following order. Note: These plugins will need to be installed individually to be successful.
  - Palette 2 plugin file destination URL: <https://gitlab.com/mosaic-mfg/palette-2-...>
  - Canvas plugin file destination URL: <https://gitlab.com/mosaic-mfg/canvas-plu...>
- i** Do not directly download and unzip the files. The plugins will only work when installed from URL in OctoPrint.
- i** Please also note that if you have any existing GCode scripts on your OctoPrint, this may affect certain Canvas Plugin and P2 Plugin functionalities, such as filament loading. Please consider reviewing/removing conflicting scripts if certain functionalities are not acting as they should.

## Step 4 — Restart OctoPrint



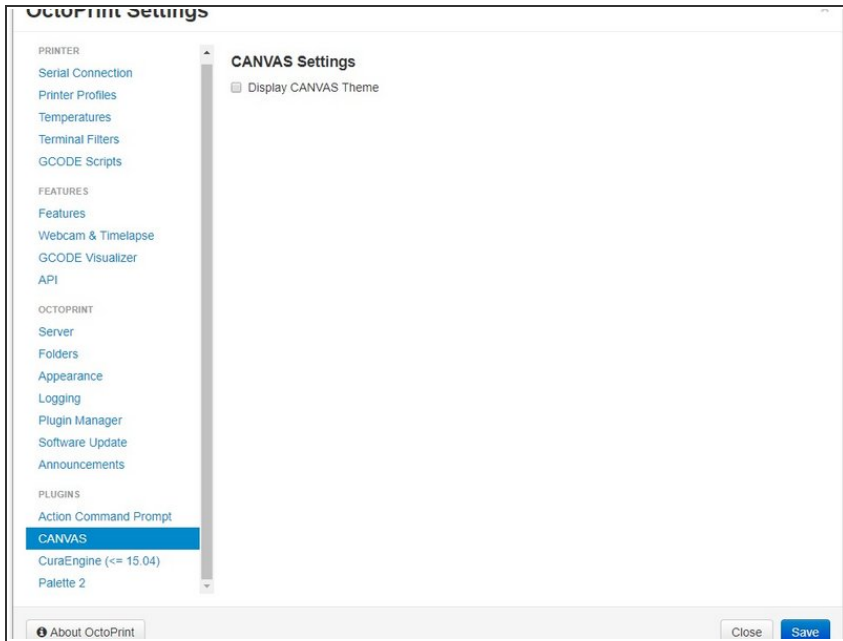
- Once completed, you'll be prompted to restart your OctoPrint server. Proceed with the restart.
- Once the server has been restarted, the interface will now be updated to the Canvas Hub interface. You should see two additional tabs: Canvas and Palette 2.

## Step 5 — Link Canvas Account and Connect to Palette 2



- To allow uploading of your sliced files directly from Canvas, you will need to first connect your account to Canvas Hub. In Octoprint, go to the **Canvas** tab and click **"Get activation code"**.
- Visit [canvas3d.io/connect](https://canvas3d.io/connect) to enter the activation code and link your Canvas account to Octoprint.
- If the link is successful, you will see your username in the **Linked Accounts** section, and **Connection Status** will change to Connected. This will allow you to send prints directly from Canvas after slicing to Canvas Hub.
- Once you're ready to connect your Palette 2, click on the dropdown menu next to the Canvas tab to select Palette 2. Connect your printer by selecting Connect from the 'Connection' box. Please ensure your Palette 2 is plugged in, turned on and connected to one of your Raspberry pi ports.

## Step 6 — Optional: OctoPrint Interface



- If you would ever like to switch back to the old OctoPrint interface, open the **Settings** menu, select Canvas under 'Plugins', and uncheck the 'Display Canvas Theme' option.

## Step 7 — Start Printing!



- You're now ready to use your Canvas Hub and Printer! Please proceed to [this support article](#) to print with your Canvas Hub, Palette 2 (S) (Pro), and printer.

If you have any additional questions, please send us a message at [support@mosaicmfg.com](mailto:support@mosaicmfg.com).