



Replacing the Fan

If your Palette 2's fan has been damaged, please follow the steps below to replace this piece.

Written By: Mosaic Support





TOOLS:

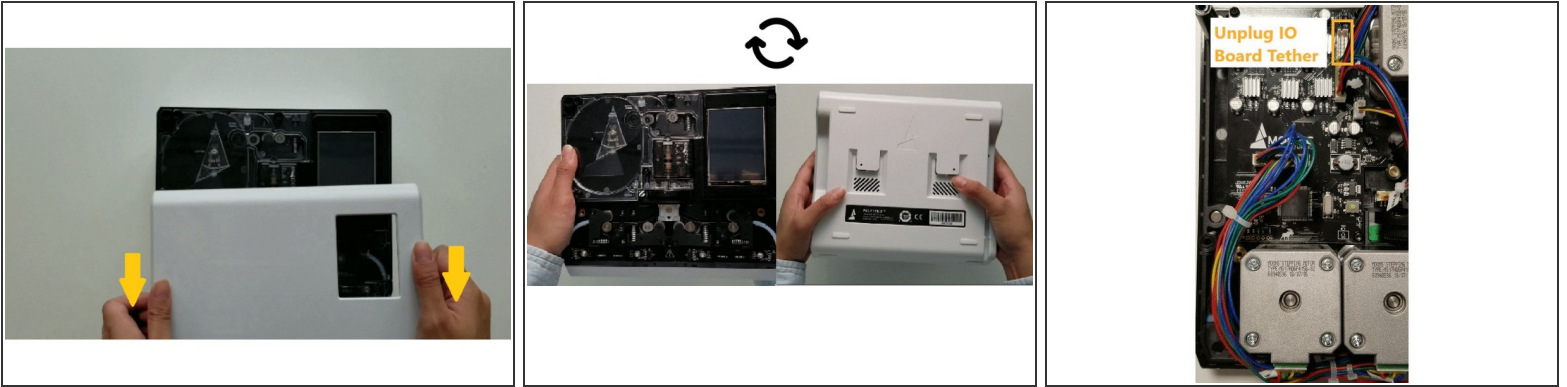
- [Torx Screwdriver](#) (1)



PARTS:

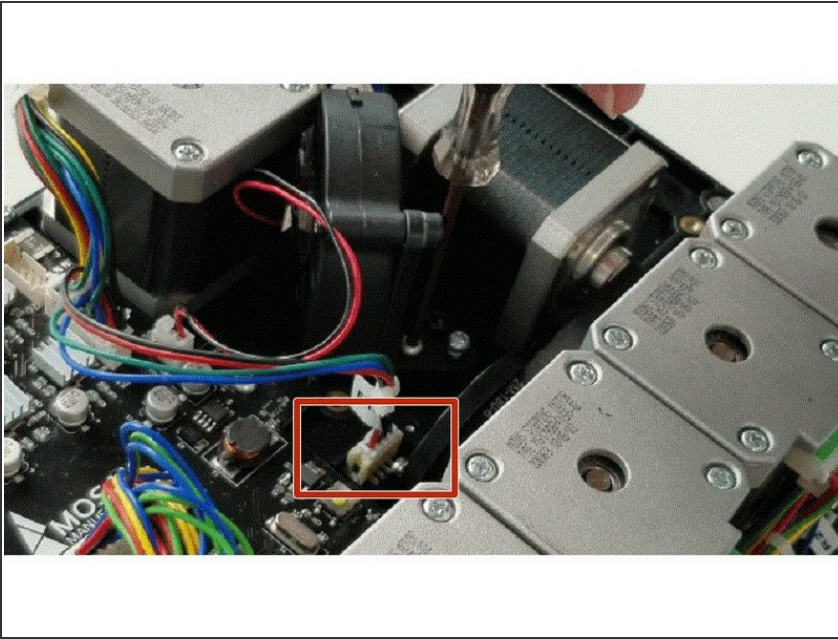
- [Fan](#) (1)

Step 1 — Remove Bottom Casing



- Turn Palette 2 off and remove the top lid by gently lifting from the sides.
- Remove the acrylic ingoing cover by loosening the five thumbscrews counterclockwise.
- Remove the 4 screws holding the bottom casing to the substructure. Two are located at the top two corners of Palette 2 while the other two are under the ingoing cover.
- Once the screws are removed, grip Palette 2 together by the substructure and bottom casing together and flip so that the screen is facing down.
- Remove the SD card before completing this step as damage may be caused to your unit if left in. The substructure is connected to the bottom casing by a bundle of wires. Slowly and carefully lift the casing from the bottom up while ensuring that the wire bundle is not pulled abruptly.
- To fully detach the bottom casing, unplug from the electronics tray, leaving only the substructure.

Step 2 — Replace Fan



- Remove the two bolts holding the fan to Palette 2's substructure. Unplug the fan's wiring from the electronics tray.
- Install new fan and re-install the bolts and wiring.

If you have any additional questions, please send us a message at support@mosaicmfg.com.