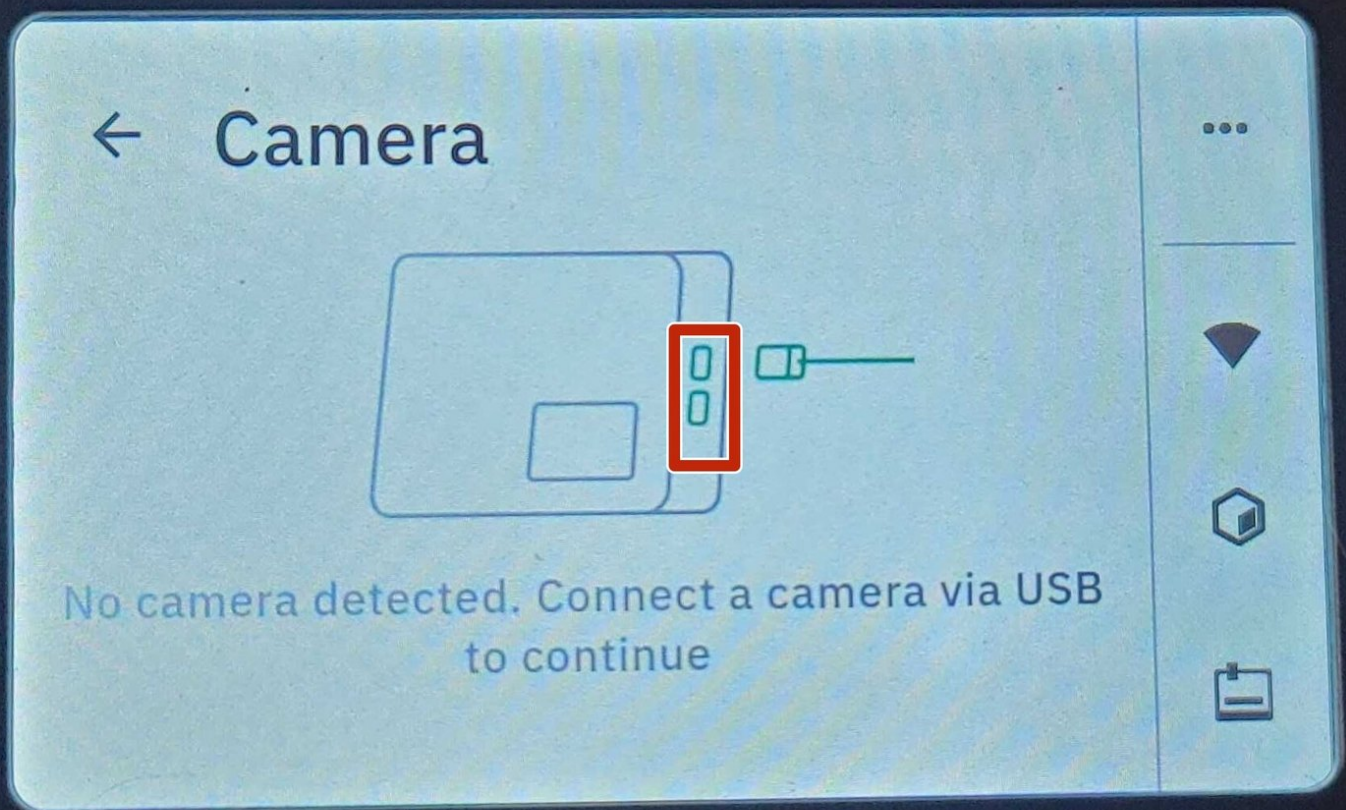




# Webcam Support

How to setup a webcam to stream a video feed from Palette 3 to Canvas.

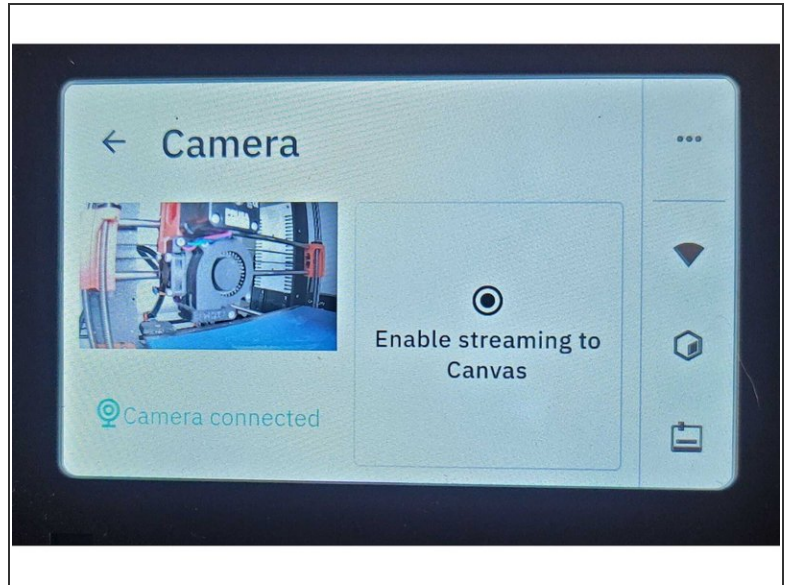
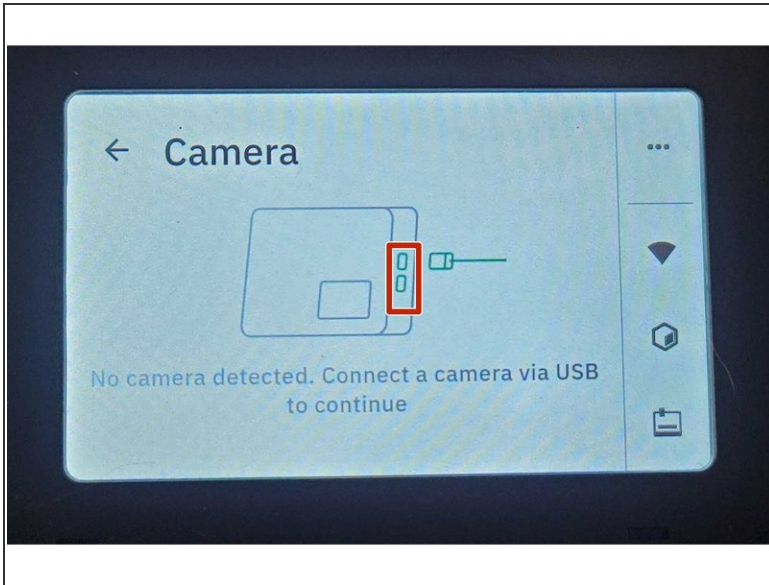
Written By: Fatima Kassim



# INTRODUCTION

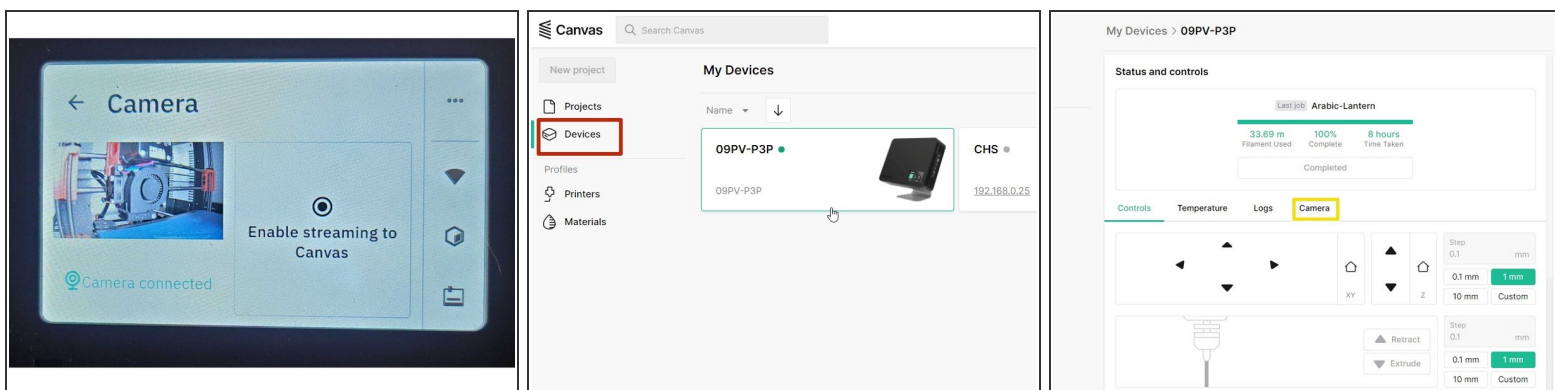
How to connect a webcam to Palette and use camera view on Canvas

## Step 1 — Connect camera to Palette



- From Palette 3's menu, go to *Settings > Camera*.
- Connect the webcam to Palette via USB using the USB ports on the IO board of Palette
- When the webcam is connected it will indicate *Camera connected* on Palette's screen

## Step 2 — Enable streaming to Canvas



- On Palette's screen click *Enable streaming to Canvas*. Palette must be connected to wifi to stream to Canvas
- On Canvas, click *Devices* and select Palette 3 under *My Devices*
- *My Devices > Status and Controls*
- Under *Status and Controls*, click on the *Camera* tab to see webcam view

If you have any additional questions, please send us a message at [support@mosaicmfg.com](mailto:support@mosaicmfg.com)!