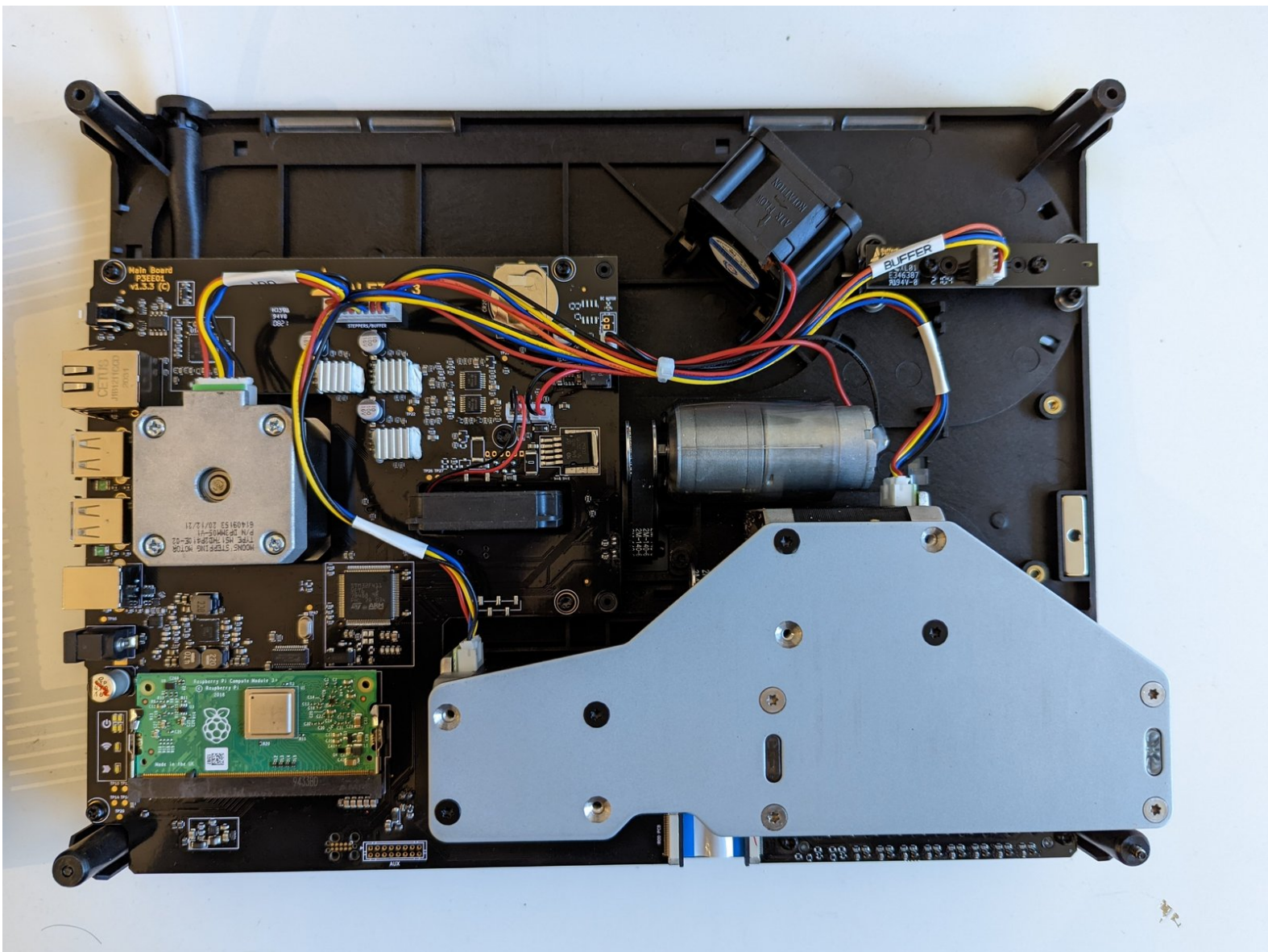




Reseating the Pi

In this guide you will learn how to remove the connector from the Pi and reseat it in your Palette 3/3 Pro

Written By: Fatima Kassim



INTRODUCTION

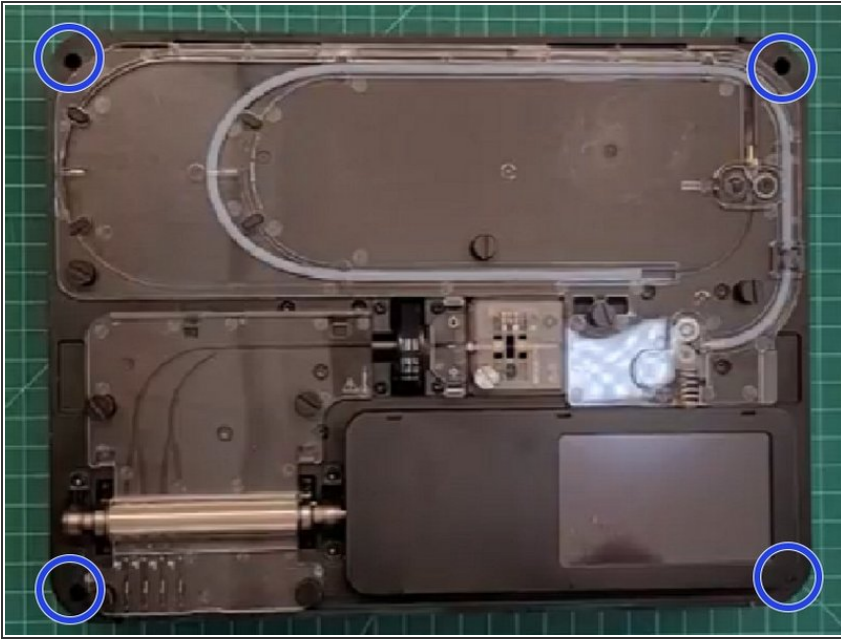
In this guide you will learn how to remove the connector from the Pi and reseal it in your Palette 3/3 Pro



TOOLS:

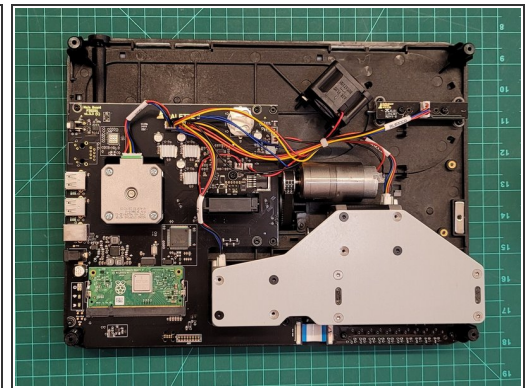
- [Torx Screwdriver](#) (1)
-

Step 1 — Removing the top portion



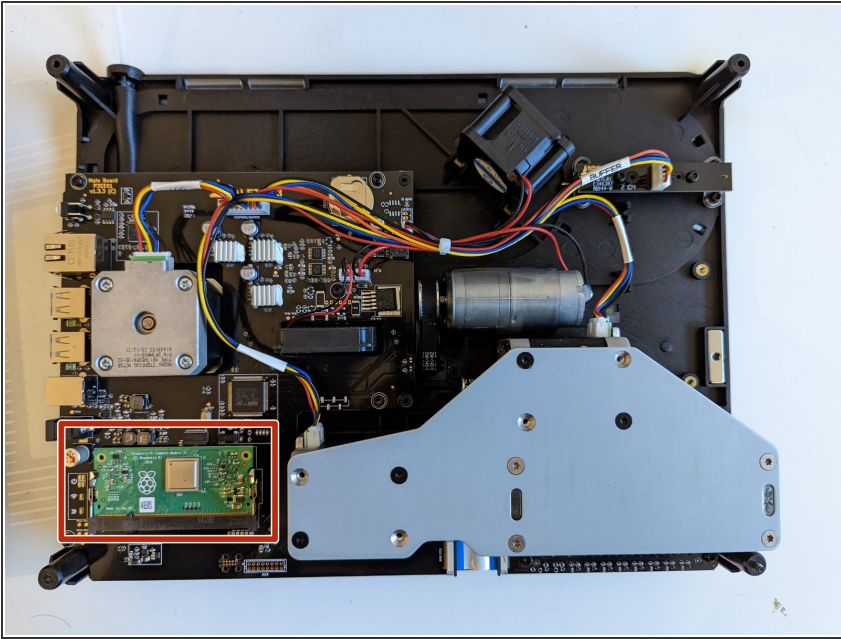
- Remove Palette's top lid.
- Using the provided Torx screwdriver, remove the 4 screws on each corner of the substructure.

Step 2 — Isolating the substructure



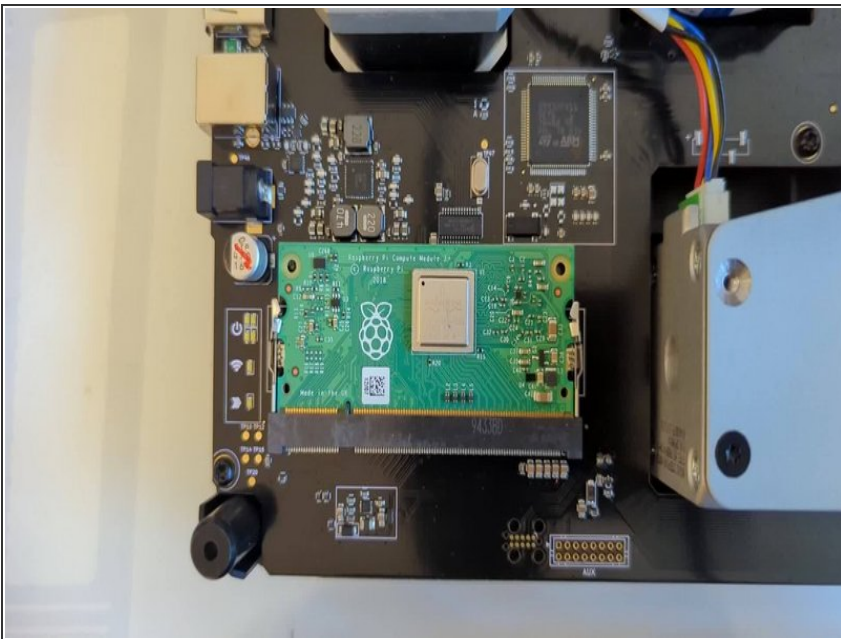
- Remove the IO plate cover from the unit, by pulling the tab on the Ethernet port. The IO plate cover is snap-fit to the unit and can be placed back easily.
- Gently lift and remove the substructure from the bottom casing.
- You'll now be able to replace the main board, fans, and other components.

Step 3 — Locate the Pi



- Locate the Pi(CM3+ Raspberry Pi Compute Module 3+)
- ☑ The Pi is the green board in the bottom left hand corner

Step 4 — Unconnecting and Reconnecting the Pi



- Remove the Pi by lifting it out of the casing
- ① Open the two metal fasteners on each side of the Pi to lift it out of the casing
- Place the Pi back into the casing and clicking it into place using the two metal fasteners on each side

If you have any additional questions, please send us a message at support@mosaicmfg.com.