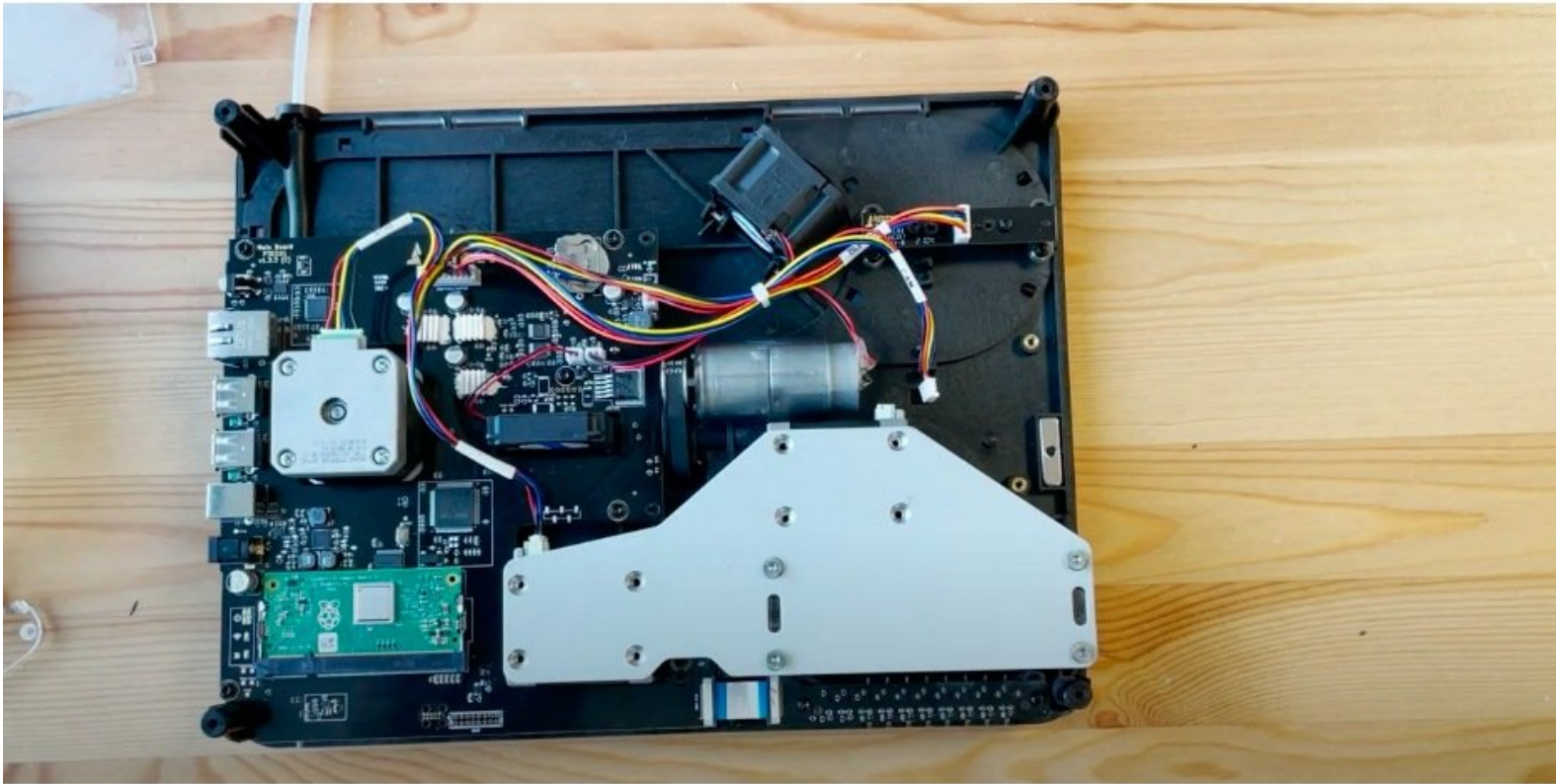




How to Replace the CAM Belt

In this guide you will learn how to replace the CAM belt in your Palette 3 Pro!

Written By: Hana



INTRODUCTION

In this guide you will learn how to:

- Replace the CAM belt in your Palette 3/Palette 3 Pro



TOOLS:

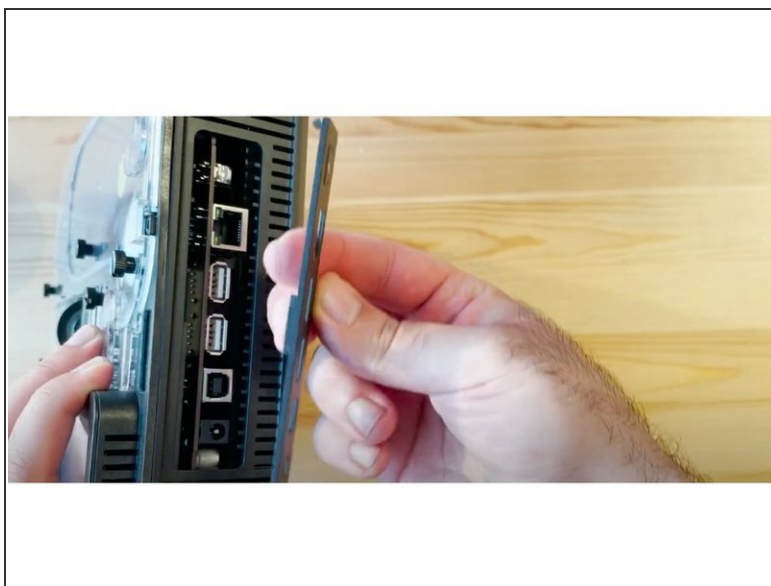
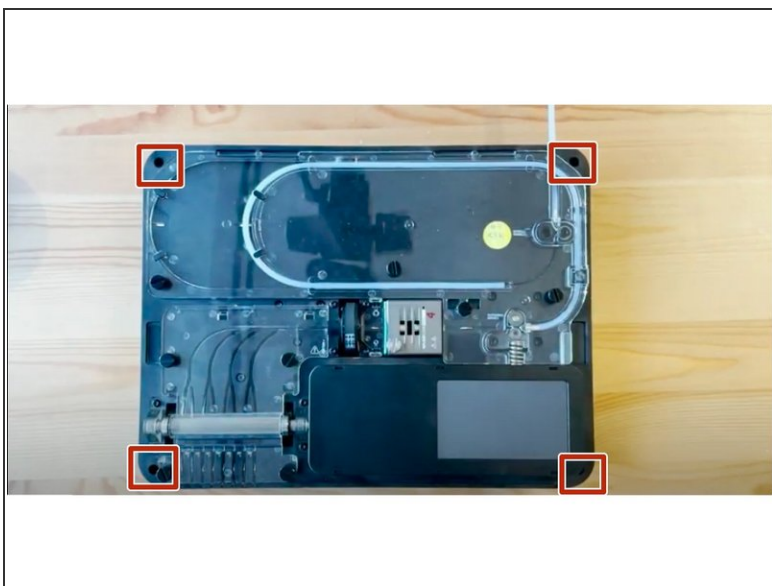
- [Torx Screwdriver](#) (1)



PARTS:

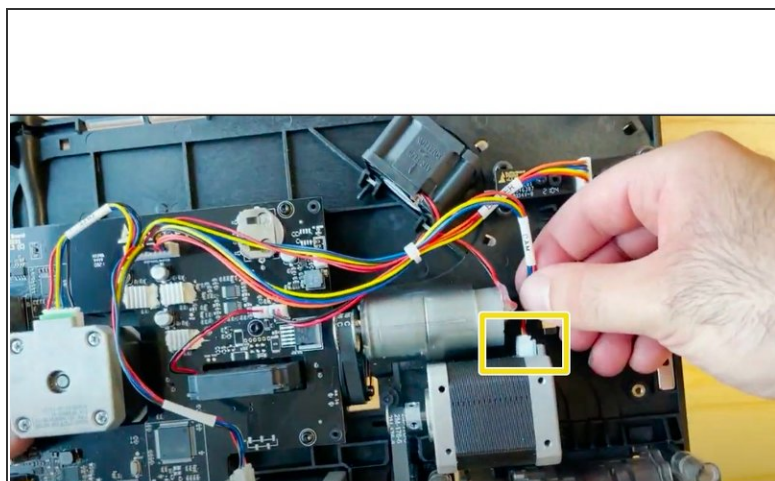
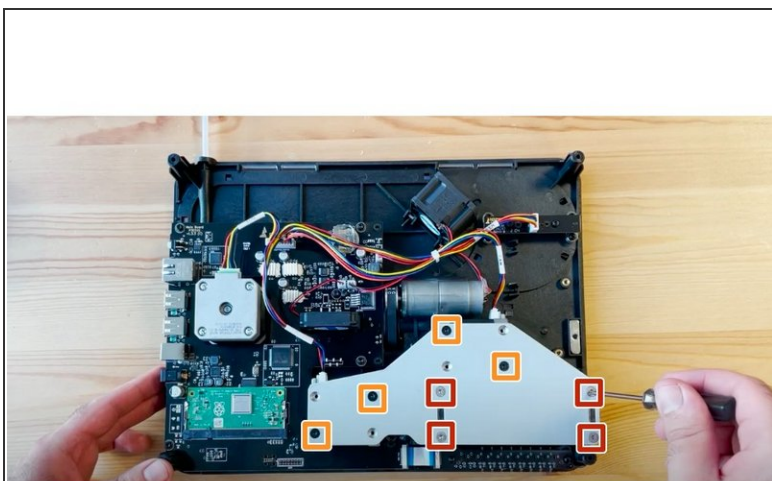
- [CAM Belt](#) (1)

Step 1 — Remove the Bottom Casing and IO Plate Cover



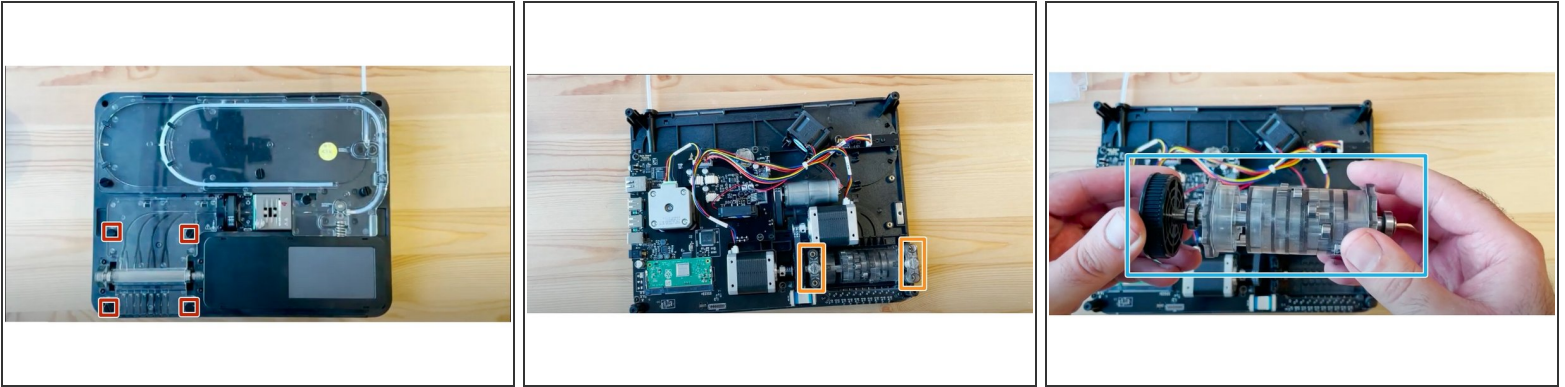
- Undo the 4 screws in each corner in order to remove the bottom casing.
- Also, remove the IO plate cover by pulling from the middle to release it from the Ethernet port.

Step 2 — Disconnect the CAM motor



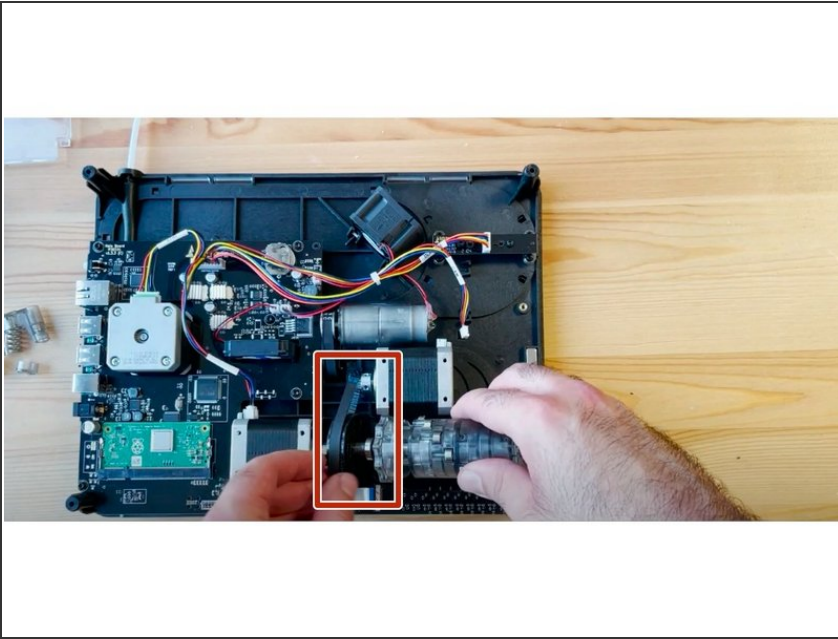
- Lift substructure to release it from the bottom casing.
- Remove CAM support bracket by:
 - Removing the 4 silver nuts
 - Removing the 4 counter-sunk screws
- Disconnect the cable connecting the CAM motor.

Step 3 — Remove CAM Assembly



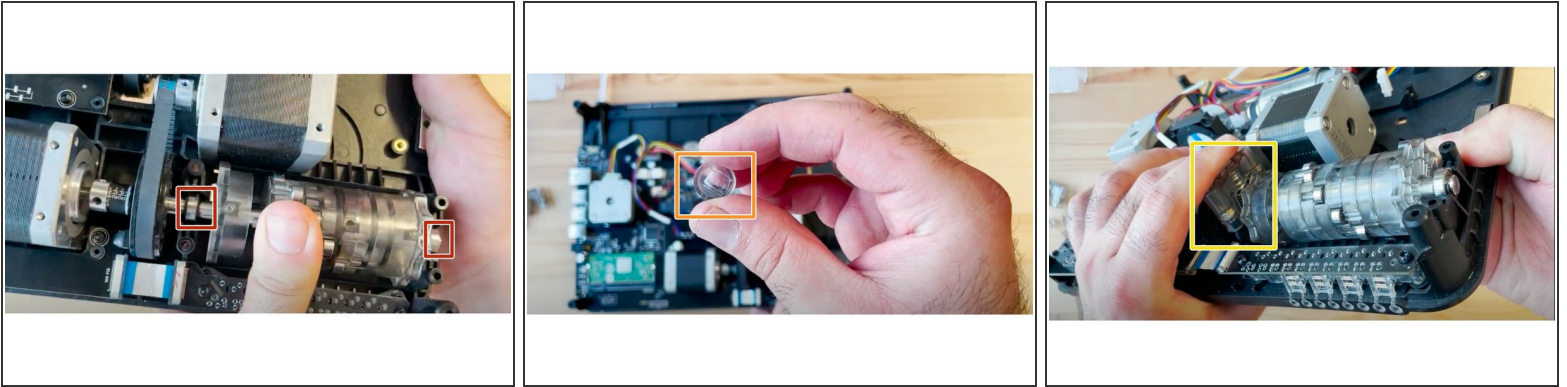
- Remove outgoing cover by undoing the thumbscrews holding it in place.
- Then remove the 4 screws holding the CAM in place.
 - ① Hold the substructure in place by holding it against a flat surface, to secure the CAM spring while removing these 4 screws.
- Hold the CAM from underneath while flipping your Palette over to the other side.
- Remove the two CAM spring supports on each side.
- Remove the CAM assembly.

Step 4 — Replace CAM Belt



- Remove old CAM belt, and place the new belt around the motor and CAM black disk.
- Place CAM back into place.

Step 5 — Re-install the CAM Motor



- Support the ingoing gear from underneath.
- Check that the CAM's bearings are resting in place.
- Put the CAM follower piece back into place, such that the small indentations align horizontally with the CAM.
- Place the spring back on top of the follower piece.
- Place the CAM's spring end cap on top of the spring. Follow the end piece while holding the ingoing drive from underneath with your other hand to compress the spring.

Step 6 — Re-secure CAM



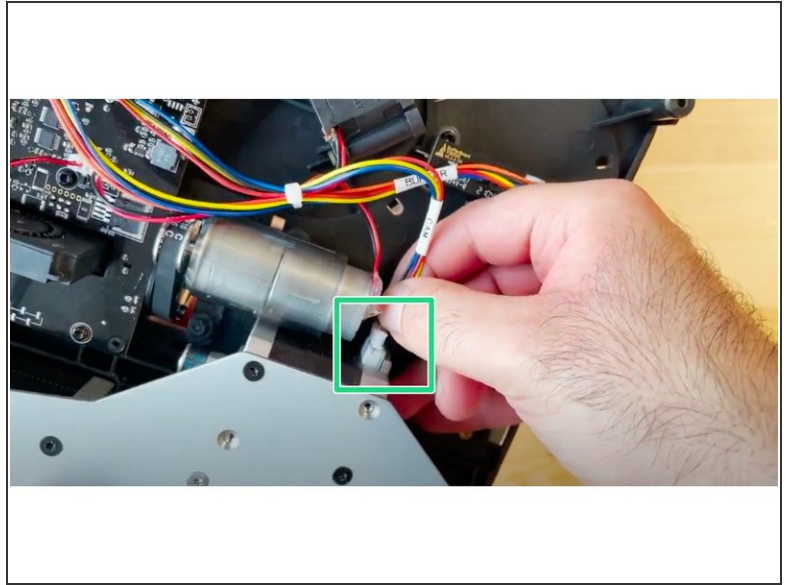
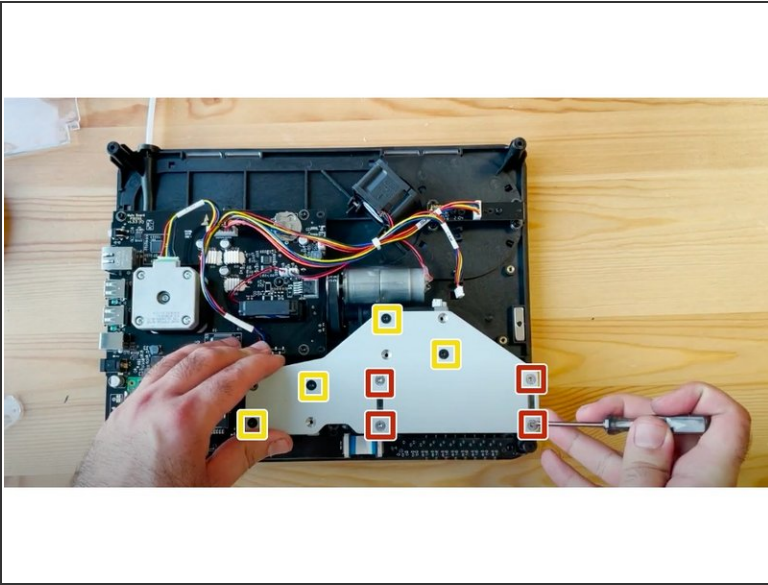
- Flip the unit over while supporting both the CAM and ingoing drive, and replace 2 of the front screws to secure the end cap.
- While tightening the screws, apply some force to the CAM end cap on the other other side to compress the springs.
- ☑ Do not tighten these screws all the way, so you can install the other CAM end cap.
- Repeat steps 5 and 6 for the end cap on the other side of the CAM motor. Fully tighten the right side screws.

Step 7 — Visual Inspection



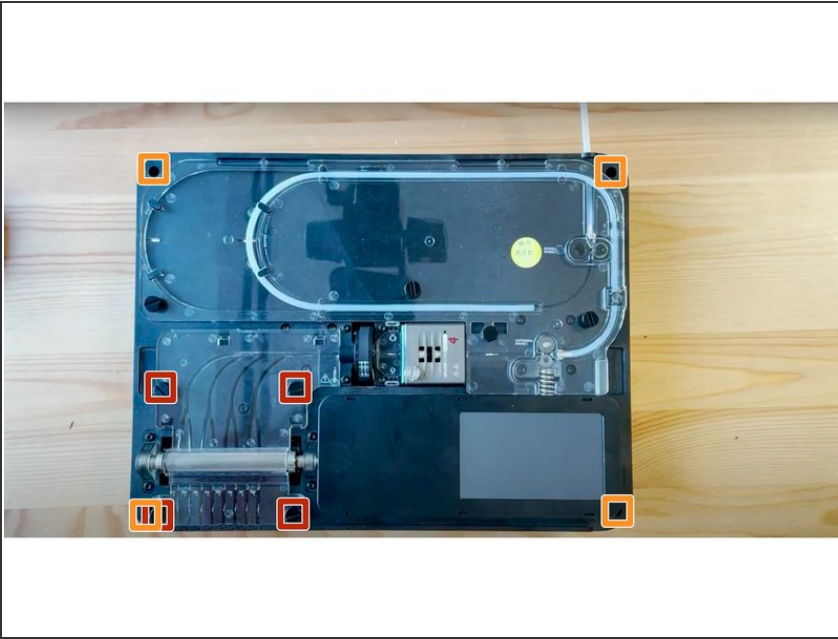
- Before reinstalling the other covers, ensure that:
 - All screws are properly tightened.
 - The end cap as well as the CAM motor are properly in place.
 - Check that the follower piece indentations are horizontal.
 - Check that the CAM belt is both on the motor and the CAM sproket.

Step 8 — Replace CAM Support Bracket



- Place the CAM support bracket back, aligning with the tabs on the endcaps.
- Return the 8 screws:
 - Place the 4 silver nuts.
 - The 4 black counter-sunk screws are placed diagonally on the motors.
- ① Half-tighten the screws initially to ensure that the plate is aligned. Once you have ensured it is placed correctly, fully tighten the screws.
- Reconnect the CAM motor cable.

Step 9 — Replace ingoing drive covers



- Replace the ingoing drive covers, by placing them and tightening the thumbscrews.
- Place the bottom casing back by seating the unit back into it.
- Return the 4 screws in the outer corners.
- Snap the IO plate back into place by aligning it, and ensure it snaps into place.

If you have any additional questions, please send us a message at support@mosaicmfg.com!