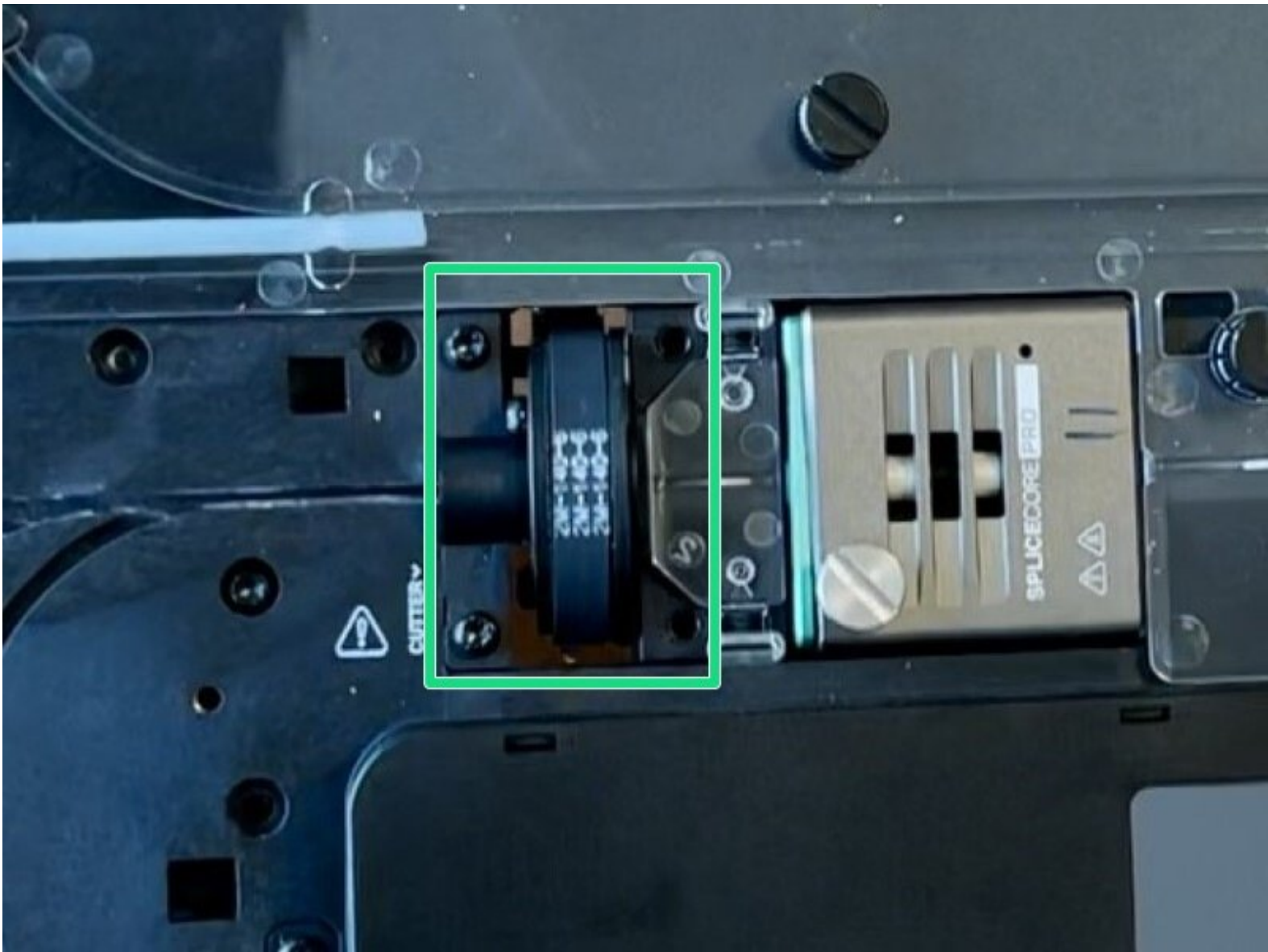




Replacing the Cutter Wheel Assembly

How to replace the entire cutter wheel assembly on Palette 3 and Palette 3 Pro.

Written By: Mosaic Support



INTRODUCTION

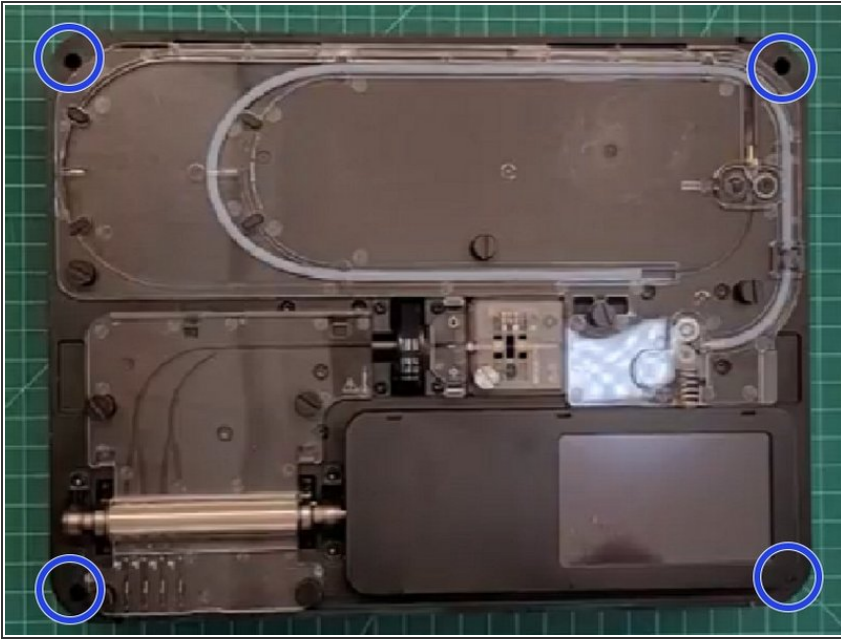
In this guide you will learn how to replace the cutter wheel assembly on Palette 3 and Palette 3 Pro.



TOOLS:

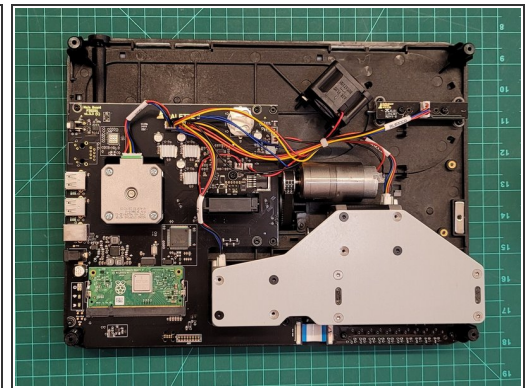
- [Torx Screwdriver](#) (1)
-

Step 1 — Removing the top portion



- Remove Palette's top lid.
- Using the provided Torx screwdriver, remove the 4 screws on each corner of the substructure.

Step 2 — Isolating the substructure

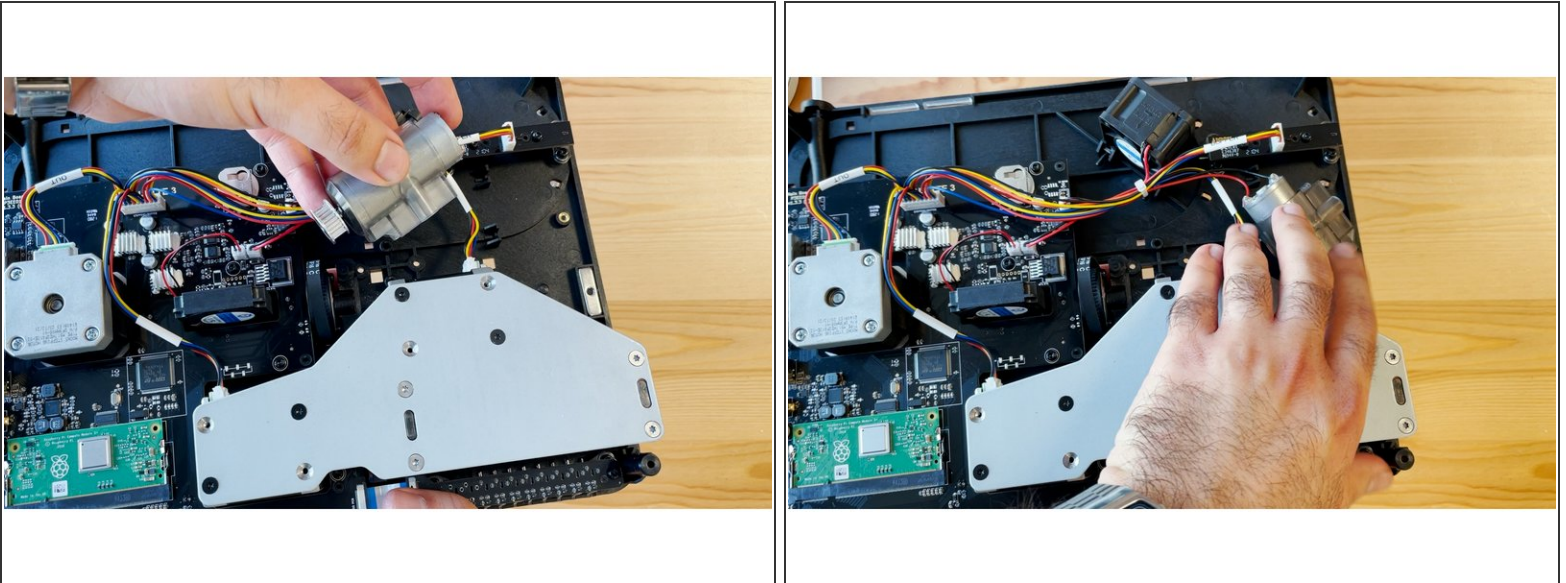


- Remove the IO plate cover from the unit, by pulling the tab on the Ethernet port. The IO plate cover is snap-fit to the unit and can be placed back easily.
- Gently lift and remove the substructure from the bottom casing.
- You'll now be able to replace the main board, fans, and other components.

Step 3 — Remove the ingoing drive cover and screws holding the cutter wheel assembly

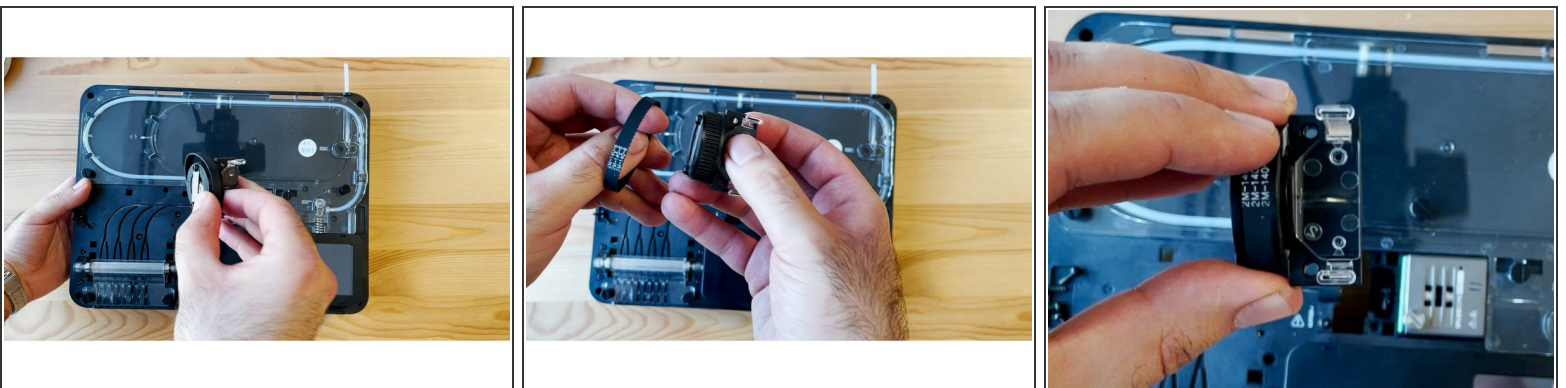
- Remove Ingoing Driver Cover B by unscrewing the two thumbscrews, and lifting the acrylic cover.
- Using the torx screwdriver, remove the two screws holding the cutter wheel assembly and the two screws holding cutter motor.

Step 4 — Remove the cutter wheel motor from its place



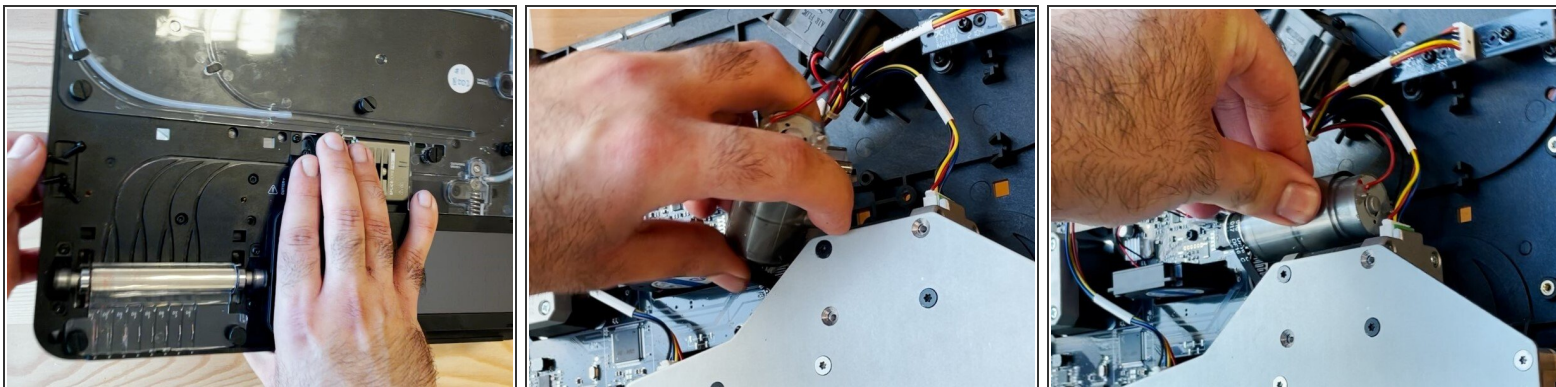
- Flip the substructure over, and remove the cutter motor from its position. Keep the motor wiring plugged in.
- Set the motor aside, and hold the motor in place while flipping the substructure over again to return to the front of the unit.

Step 5 — Remove the old cutter wheel assembly



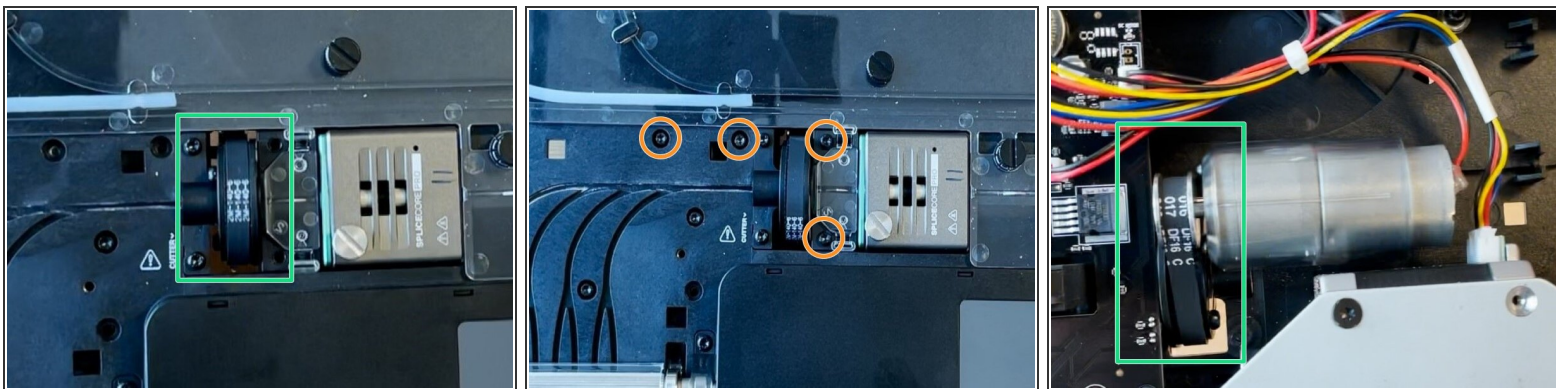
- Lift the old cutter wheel assembly from the substructure. Set the cutter belt aside.
- Place the old cutter belt onto the new cutter wheel assembly, before returning back into the unit.

Step 6 — Reposition motor



- Hold the cutter wheel assembly while flipping the unit to face the bottom of the substructure.
- Insert the gear end of the motor into the belt, and then re-align the pins on the motor to its original position on the substructure.

Step 7 — Replace the screws holding the cutter motor and assembly



- Check that the belt is around the cutter wheel sprocket.
- Holding the motor in place with your hand, replace the two screws to hold the motor in place. Proceed with the other two screws to hold the cutter wheel assembly.
- ☑ For the two screws holding the cutter wheel assembly, avoid over-tightening to prevent threads from stripping.
- Check that the cutter wheel assembly and motor are back in place, and that the belt is both on the cutter wheel sprocket, and motor.

Step 8 — Re-assemble the unit



- Place the ingoing drive cover back in place and secure with the two thumbscrews.
- Place the substructure back into the bottom casing, and secure back into place with the four screws.
- Snap the IO plate cover back into place.

If you have any additional questions, please send us a message at support@mosaicmfg.com