



# Preferences Menu and Status Bar

This guide will show you how to navigate the preferences menu and status bar!

Written By: Mosaic Support

## Welcome



**Start Print**



**Controls**



**Settings**



**Files**



**Printers**

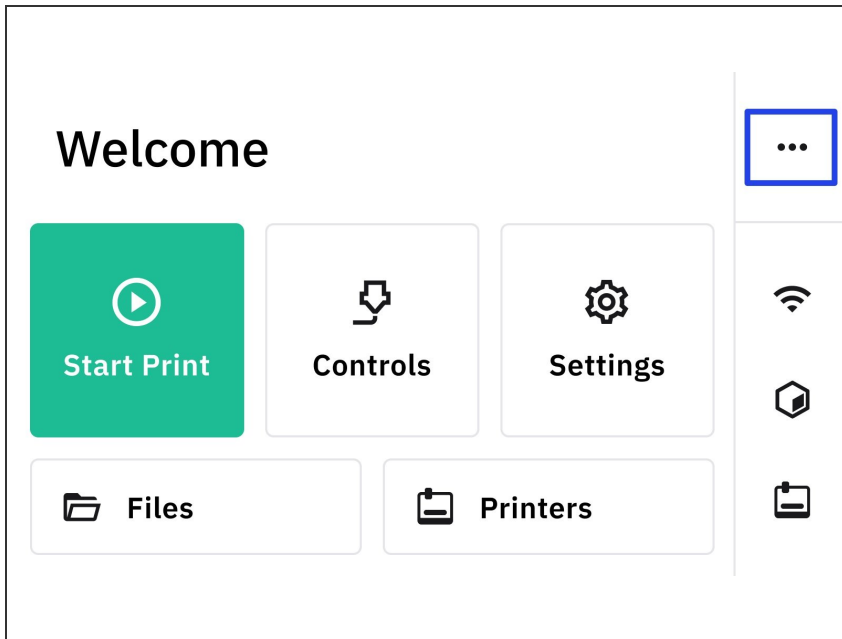


# INTRODUCTION

Navigate the preferences menu and access the status bar and preferences to find:

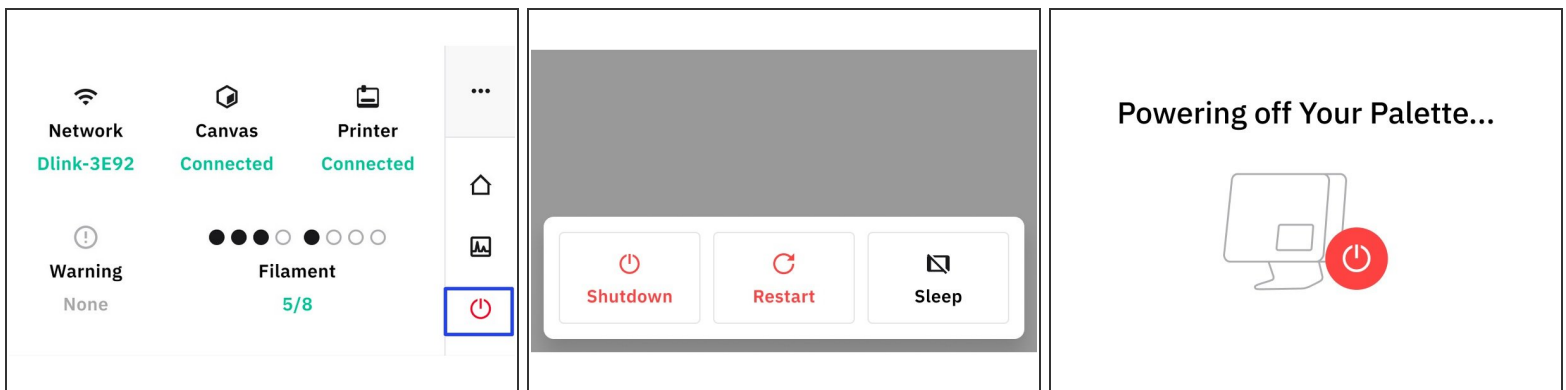
- Power on/off
- Network
- Canvas
- Printers
- Xray Mode
- Filament Inputs

## Step 1 — Access Status Bar



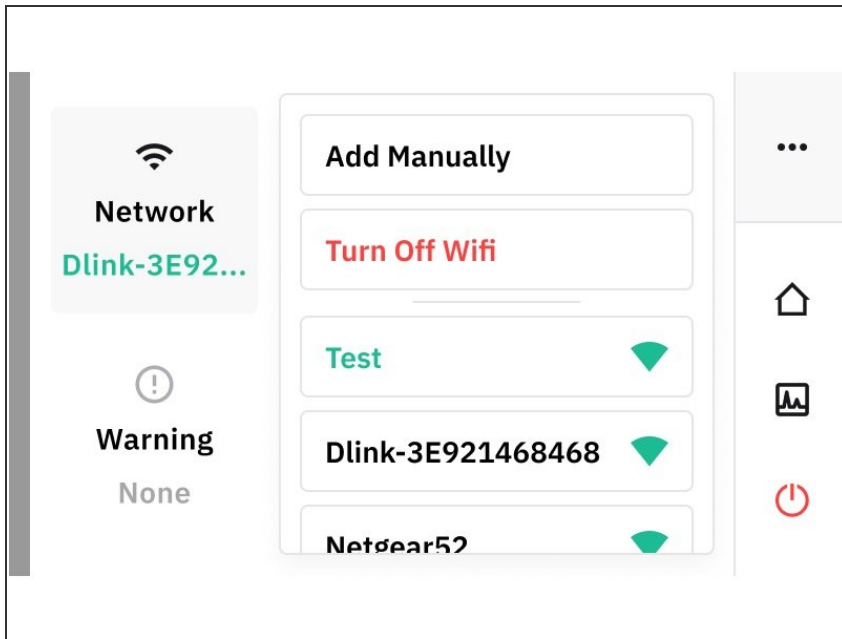
- From Palette's main screen, tap this icon.

## Step 2 — Power Menu



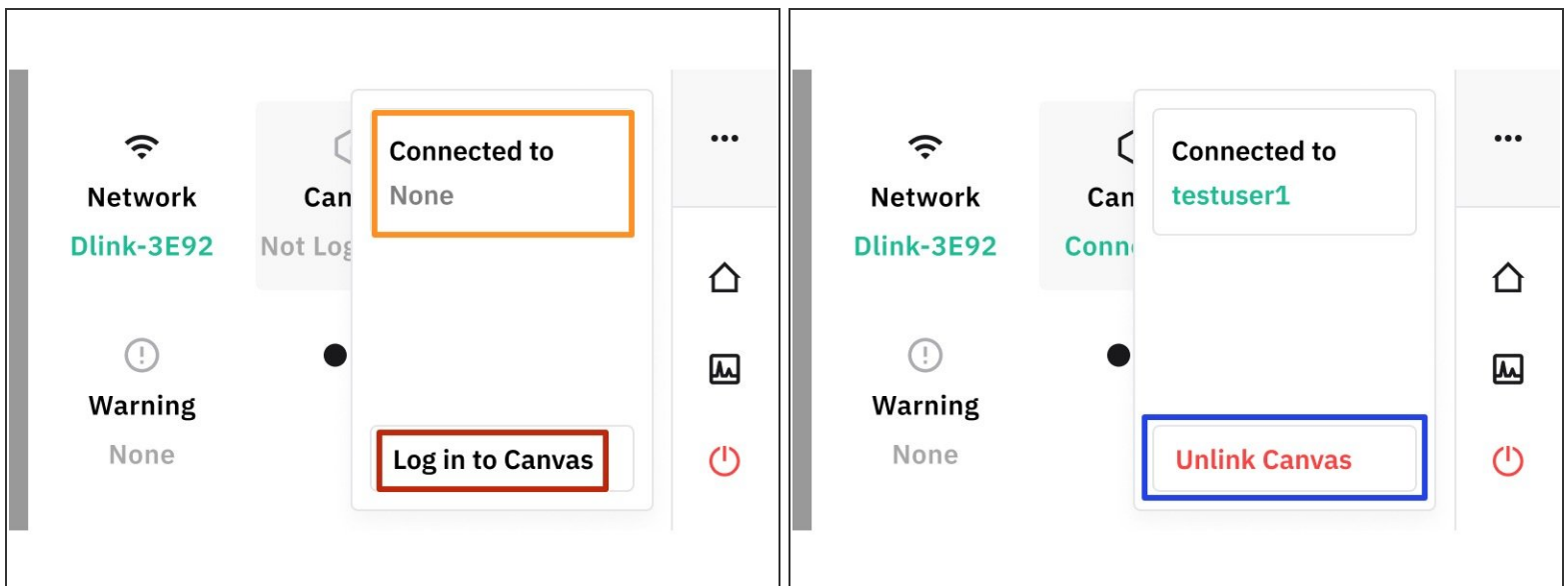
- To access power settings, tap the icon in the right bottom corner.
- To turn off your Palette tap *Shutdown*.
- To turn off your Palette and reboot it, tap *Restart*.
- To power down your Palette and return it back to its previous state once you turn it back on, tap *Sleep*.

## Step 3 — Network



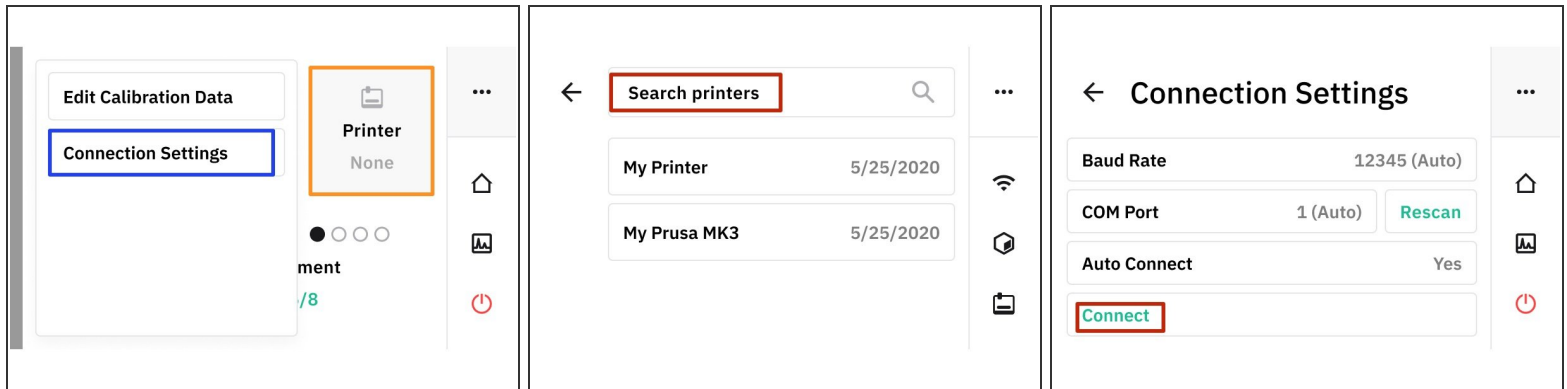
- To connect your Palette to Wifi tap *Network*.
- You can either choose a network from the list, or tap *Add Manually* to add one using an SSID and a password.
- To disconnect from your local Network tap *Turn Off Wifi*.
- To test your WiFi's performance, tap *Test*.

## Step 4 — Canvas



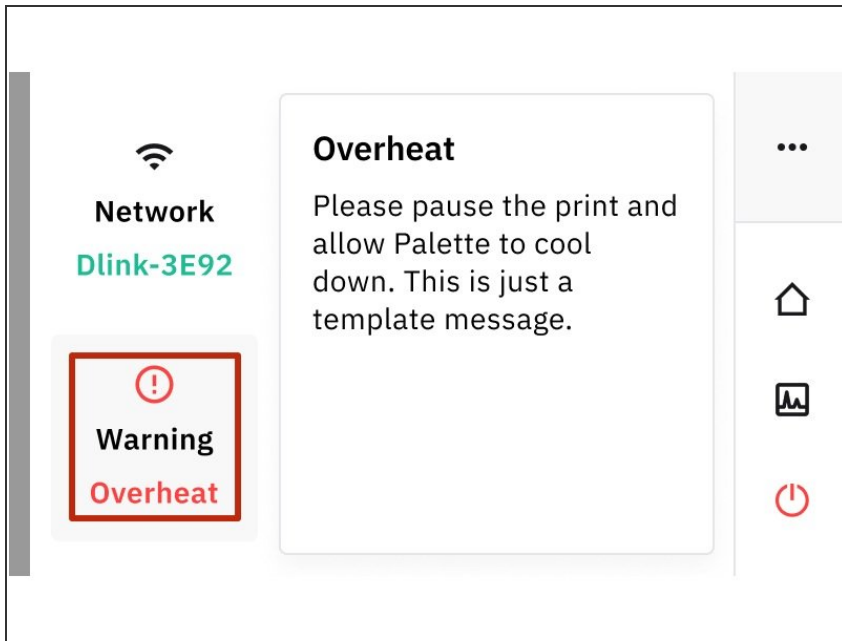
- If your Palette is connected to your [Canvas](#) account, it will be shown under *Connected to*.
- To Login to Canvas, tap the *Canvas > Log in to Canvas*.
- To remove your Palette from the devices list in Canvas, tap *Unlink > Disconnect from Canvas*.

## Step 5 — Printer



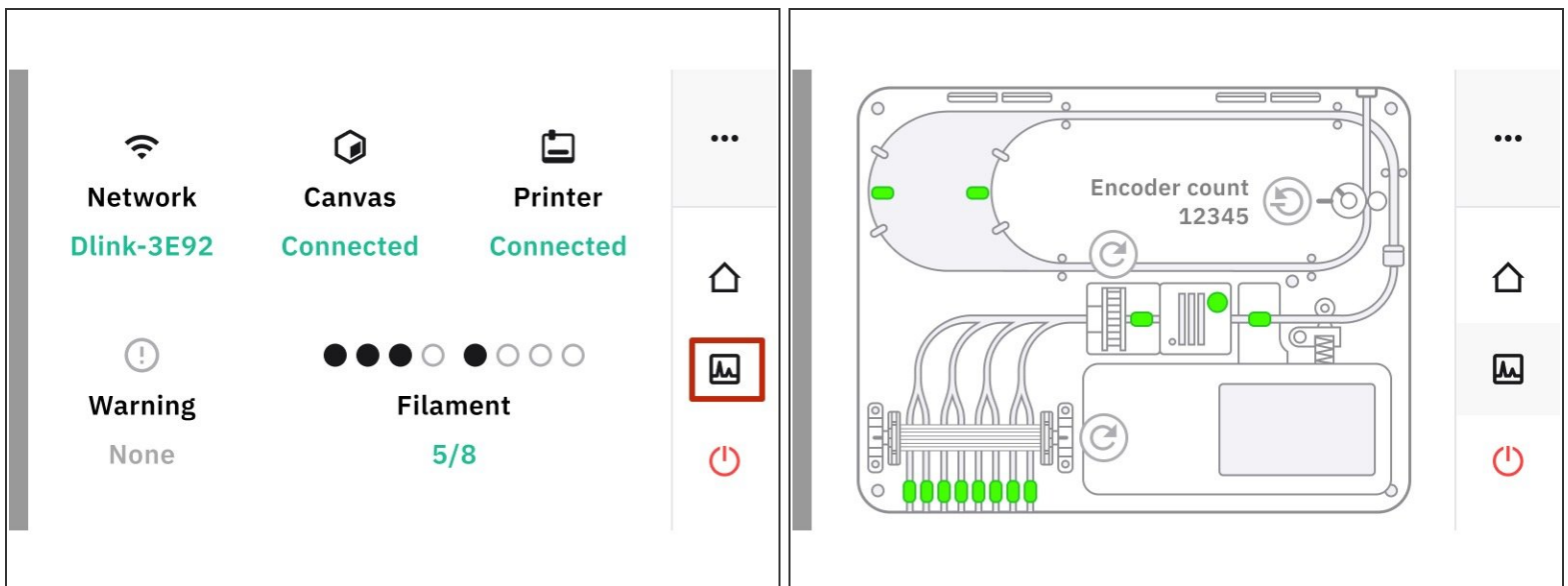
- To view the printers that have been connected to your Palette, tap *Printer > Connection Settings*
- To add a new printer, tap *Search printers* and follow the prompts.
- To edit the settings of an already existing printer tap either any of the printers in the list.
- *Connection Settings:*
  - *Baud Rate:* Indicates how fast your Palette and printer are communicating in number of bits per second. This number can be adjusted or automatically calculated.
  - *Com Port:* This will show if there is a USB connected to your Palette. Tap Rescan to detect if there is one.
  - *Autoconnect:* Tap this to set your Palette to automatically connect to the printer you have selected.
  - *Connect:* Connect your printer and Palette.

## Step 6 — Warning



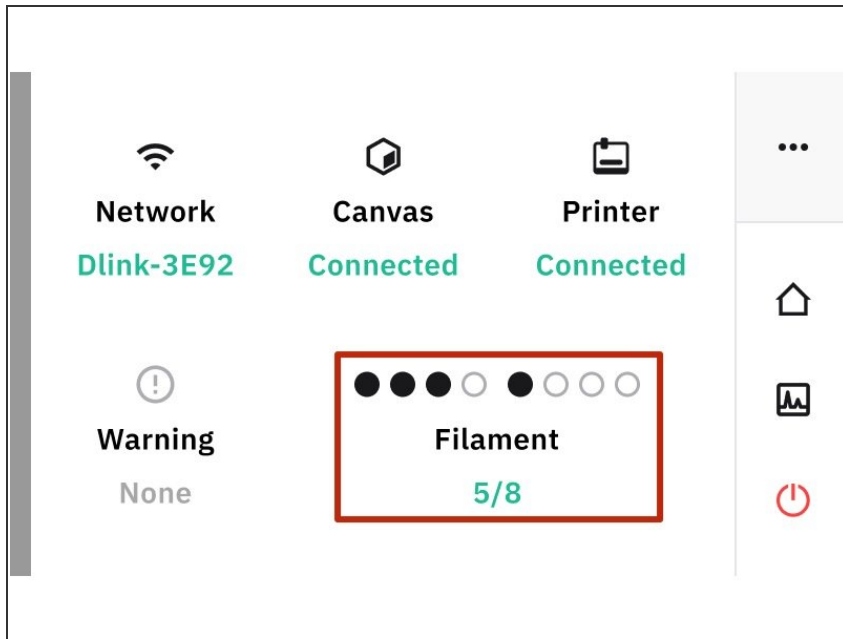
- If there are any Warnings they will be displayed here.
- I.e. *Overheat*: Pause the print and allow Palette to cool down to prevent overheating.

## Step 7 — Xray Mode



- Tap this icon to access *Xray Mode*. This allows you to see the live status of all Palette components.

## Step 8 — Filament Inputs



- *Filament Inputs*: Allows you to see which inputs are loaded or empty.
- Circles that are solid means that the inputs are loaded.
- Blank circles are inputs that are empty.

If you have any additional questions, please send us a message at [support@mosaicmfg.com](mailto:support@mosaicmfg.com).