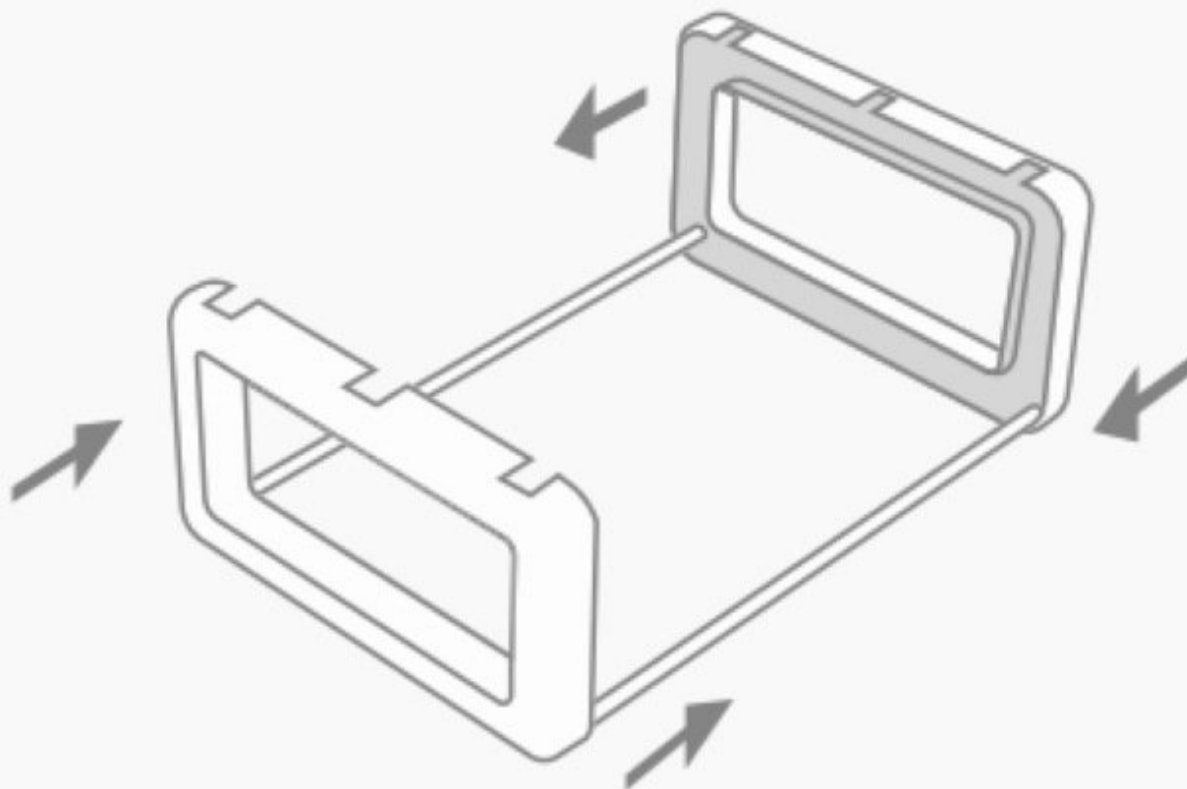




# Printer Setup

How to setup your printer for Palette 3

Written By: Mosaic Support



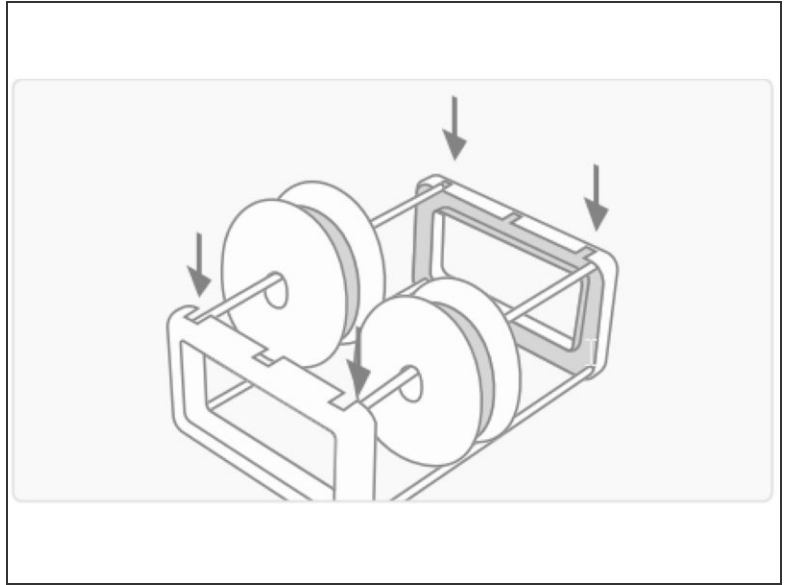
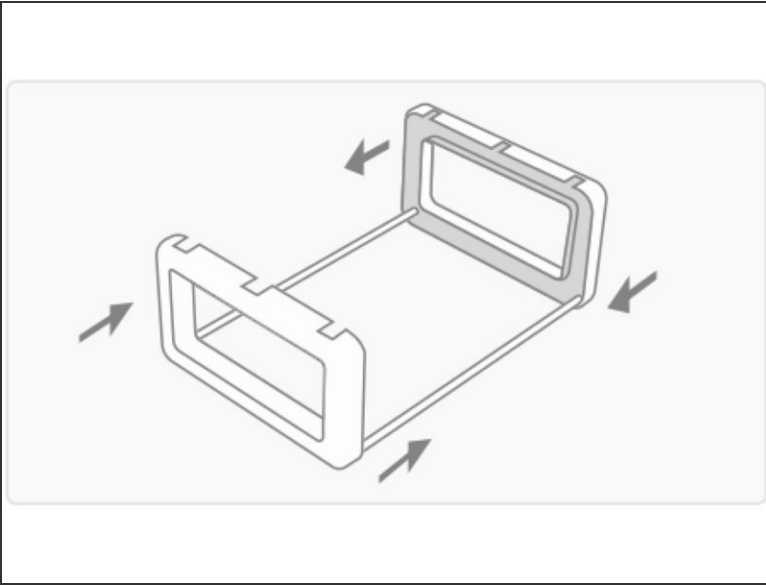
## INTRODUCTION

In this guide, you will learn how to:

- Assemble the spoolholder included with Palette 3
- Attach the tube clip guide to the printer's extruder and where to find custom tube clips
- Palette and printer placement
- Recommended tube lengths to select for the printer

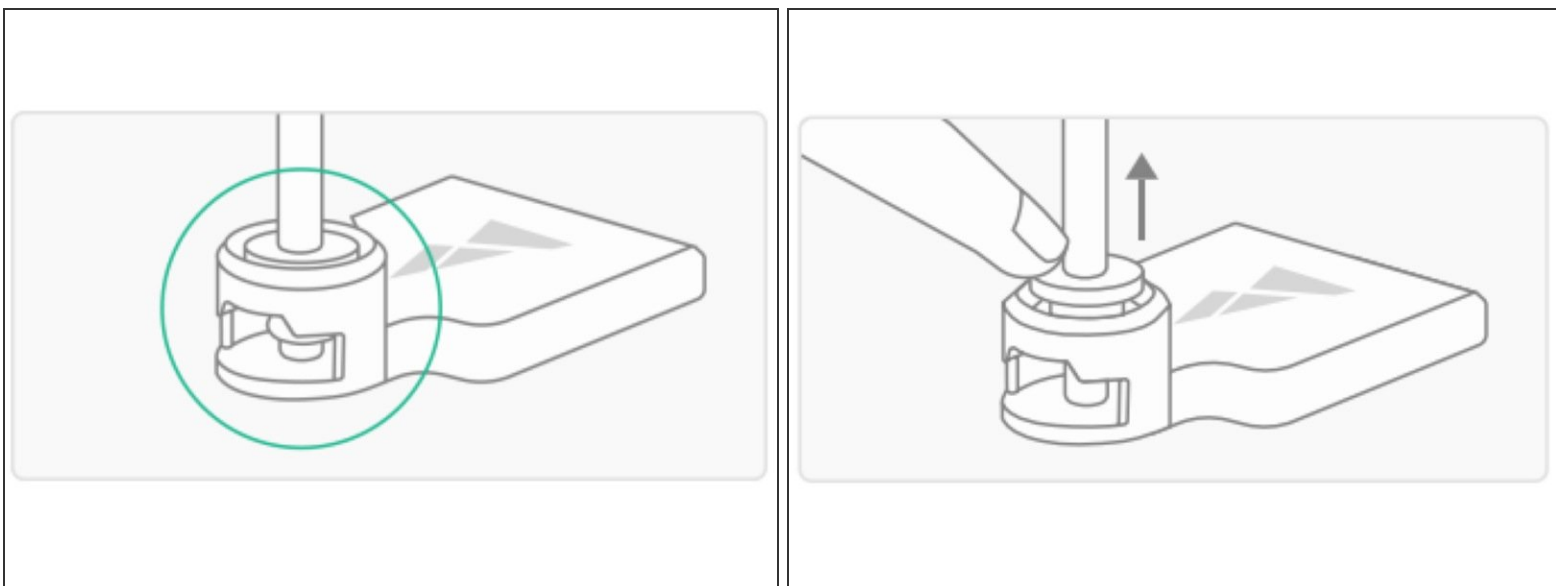
***Tutorial video coming soon, check back again later!***

## Step 1 — Assemble the Spool Holder



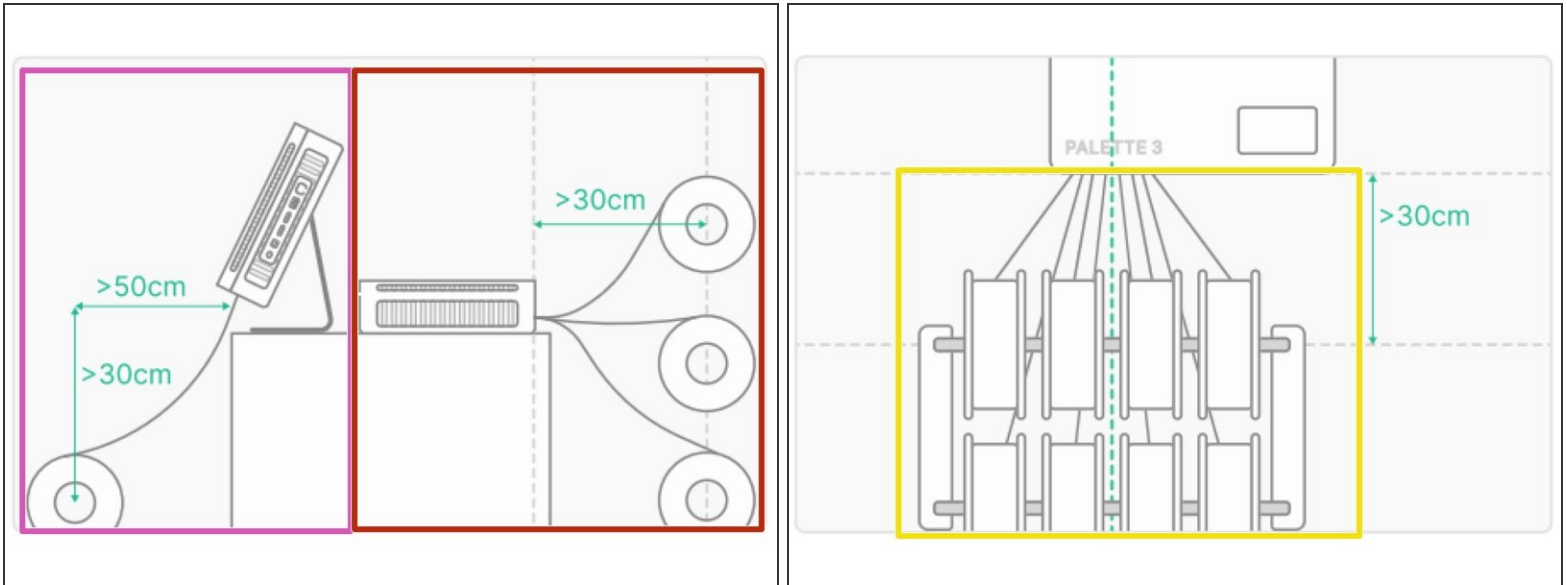
- Insert two rods into the bases of the spool holder ends, press the ends together firmly.
- Place filament onto the remaining rods. Lower the rods onto the notches located on top of the spool holder ends.

## Step 2 — Attach Tube Clip Guide to Printer's Extruder



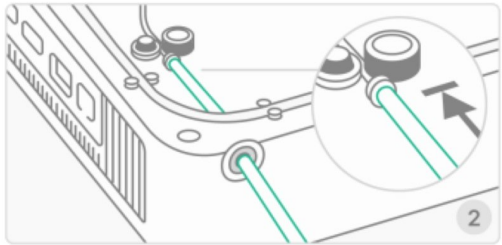
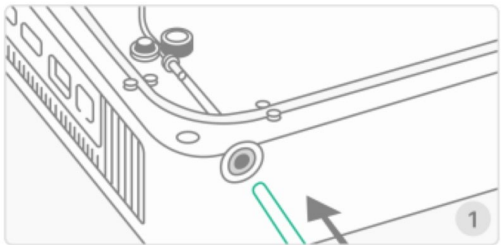
- Use the velcro provided and attach one piece to the printer's extruder, near where the filament is inserted. Attach the other piece to the back of the tube clip provided.
  - ① For Direct Drive printers, this tube clip will be positioned directly above the printhead or hot end.
  - ① For Bowden-style Printers, this tube clip will be positioned on the Bowden extruder, before travelling through the Bowden PTFE to reach the hot end.
- Position the circular section of the clip above where filament is inserted, and press the tube clip into place.
  - ① You can find custom tube clips [here](#).
  - ☑ To remove the tube from the extruder clip, use a finger to hold back the collet to prevent it from gripping the tube, and gently pull on the tube.

### Step 3 — Select Placement for Palette 3 and Spool Holder



- Placement options:
  - **Place Palette on its stand:** Position the spoolholder directly below Palette.
  - **Place Palette flat on the surface:** Position the spoolholder on a surface with the same height as Palette.
  - **Mount Palette:** Align the spoolholder position to the filament inputs on Palette if possible

## Step 4 — Select the Outgoing tube length you will be using to connect to the printer's extruder.



### Length of Outgoing Tube Used

<input type="button" value="S (57cm)"/>	<input type="button" value="M (80cm)"/>
<input type="button" value="L (110cm)"/>	<input type="button" value="Custom"/>

< BackNext >

- The medium tube is ideal for most Palette and printer setups. The short tube is ideal for printers using a Bowden tube, as we want to reduce the filament path as much as possible in these cases. The long tube can be used if Palette is mounted above the printer.
- ❗ Using a shorter tube when possible can allow for calibration adjustments to appear sooner while printing, due to the lesser distance the filament has to travel.
- The long tube mainly used for large printers where positioning requires the extra length.
- If you are using your own tube, please enter the measurement as a custom length.
- Insert the outgoing tube through the output, and make sure the tube sits flush to the brass coupling.

**⚠ Before printing, please ensure that the tube is pushed all the way down to brass coupling.**

If you have any additional questions, please send us a message at [support@mosaicmfg.com](mailto:support@mosaicmfg.com).