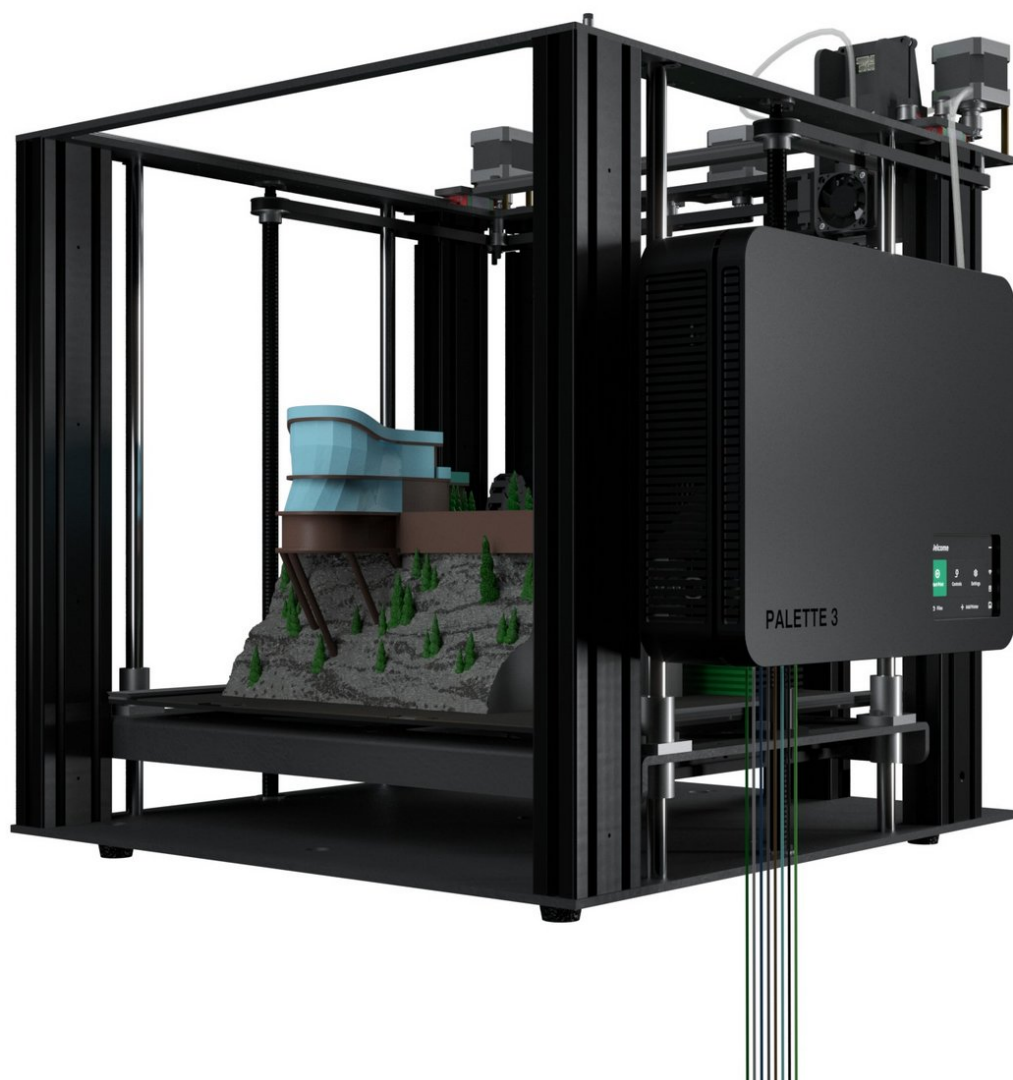




Printer Controls

How to control the printer temperature, extrude filament, and move the axes on the printer from Palette 3's screen.

Written By: Mosaic Support

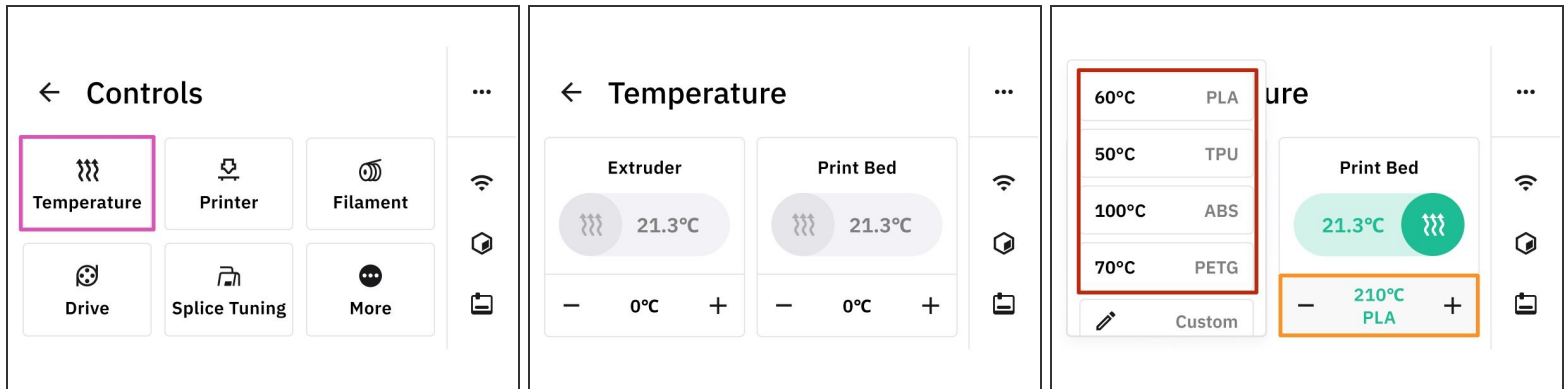



INTRODUCTION

In this guide, you will learn how to control the following printer functions from Palette 3's screen:

- Set the nozzle and bed temperature.
- Move the printer axes and extruder.
- Turn fans on/off, and adjust fan speed.

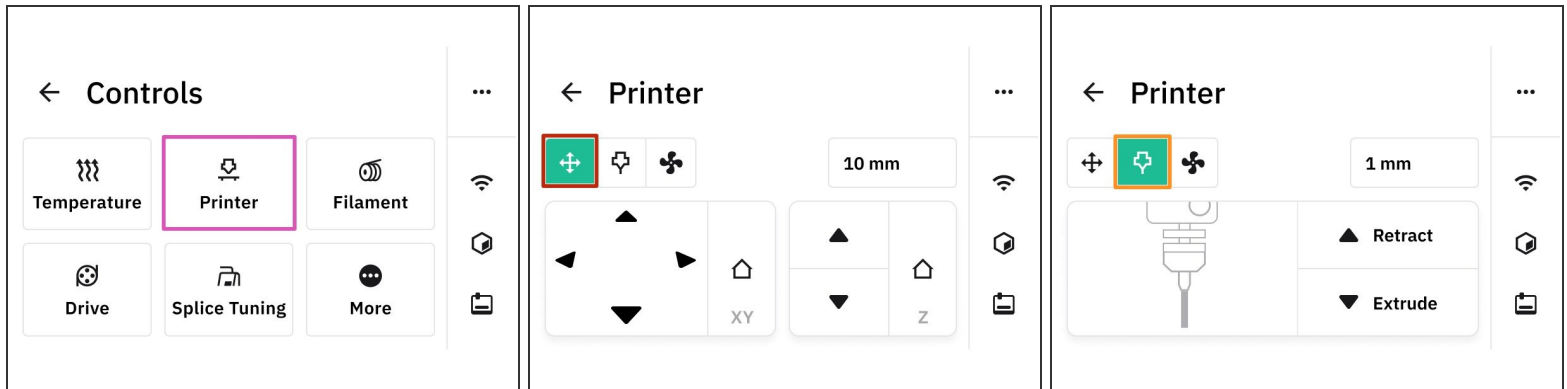
Step 1 — Temperature



 Controlling your printer from Palette is only available in connected mode. Instructions on how to switch modes can be found [here](#).

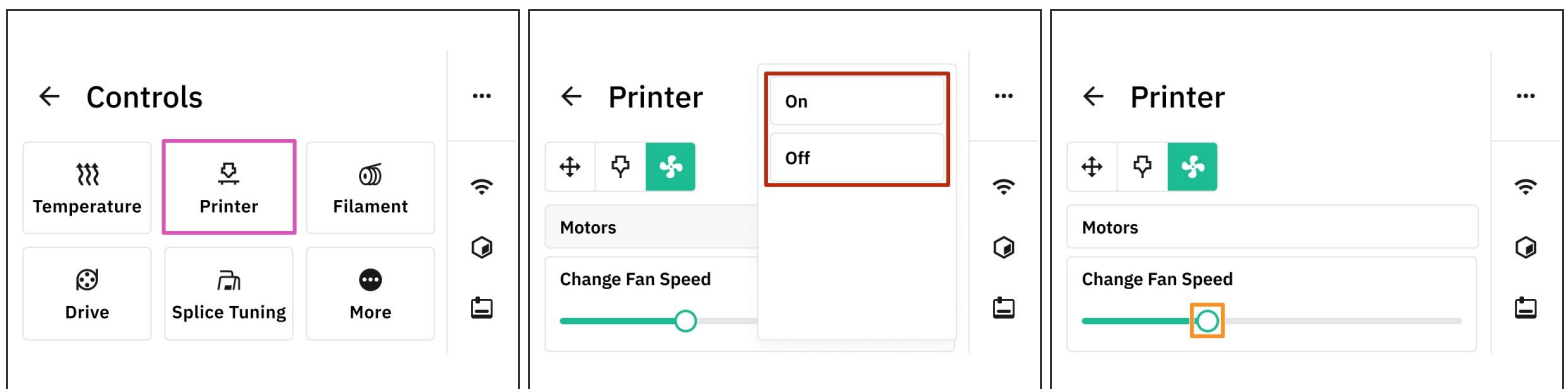
- Begin by going to *Controls > Temperature* from the home menu.
- You can customize the temperatures for both the Extruder and the Print Bed by entering a value
- Preset Temperature: There are preset temperatures for you to choose from depending on the type of material you're printing eg. PLA, TPU, ABS
- Custom Temperature: You can also customize temperatures using the Custom button, or adjusting the temperature by using the -/+ symbols

Step 2 — Printer Axes and Extruder Movements



- Go to Controls > Printer
 - Tap on the Cursor icon to control the XY and Z axes.
 - Press the *Home* icons for both the XY and Z to return them to origin.
 - Tap on the Nozzle icon to extrude and retract filament.
- ✎ For both axes and extruder controls, enter the number of steps in millimeters for the desired movement.

Step 3 — Fans



- Go to *Controls* > *Printer*
- Click on Fan symbol to turn the motors on/off.
- Use the slider to adjust the fan speed.

If you have any additional questions, please send us a message at support@mosaicmfg.com