



Load, Clear and Cut Filament

This guide will show you how to navigate Palette's main screen to load, clear and cut filament!

Written By: Mosaic Support

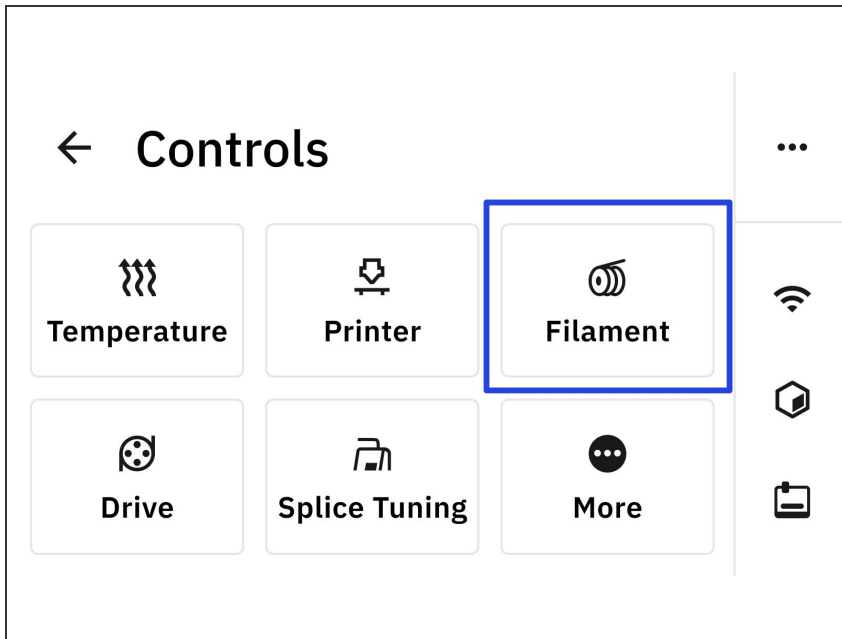


INTRODUCTION

In this guide you will learn how to:

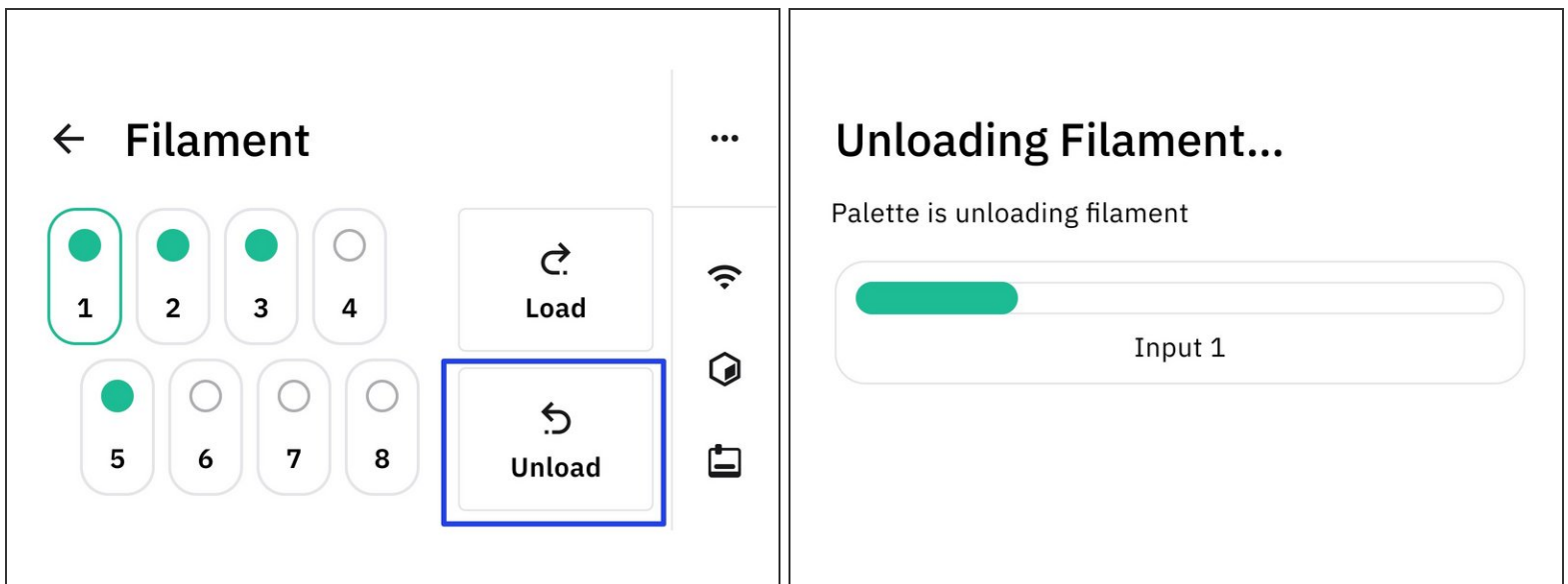
- Access Palette's filament controls
- Load/unload & cut filament from Palette's ingoing drive
- Clear the outgoing drive

Step 1 — Accessing Filament Controls



- Begin by going to *Controls > Filament*.

Step 2 — Unloading Filament from Ingoing Drive



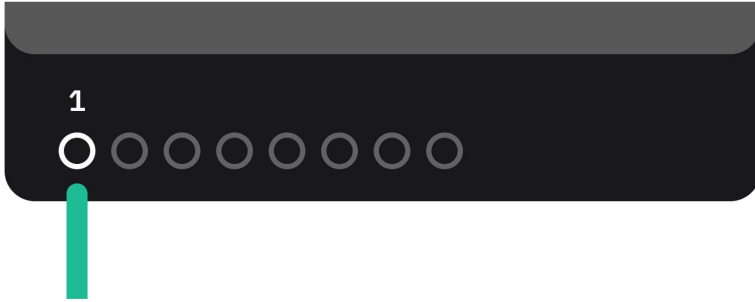
- If an input already has filament loaded, it will be indicated by the green marker.
- Select the input that you'd like to unload filament from, and then select *Unload*.

Step 3 — Loading Filament

Load Filament

2/4

Please insert filament to Input 1

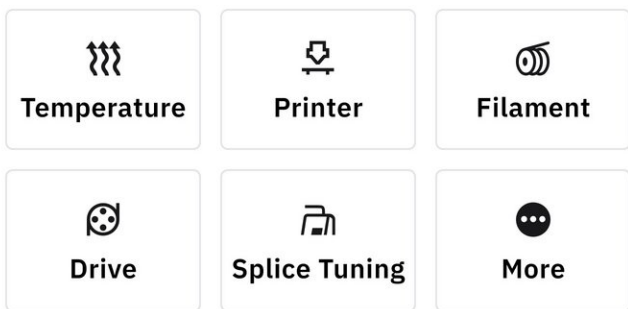


- Inputs without filament loaded will be marked with an empty circle.
- Tap *Load*. Once the light for the input is flashing, begin loading filament.

Step 4 — Cut Filament

Controls

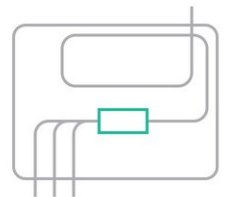
...



Cut Filament

The cutter will perform one cutting action.

When you are ready, press Cut.

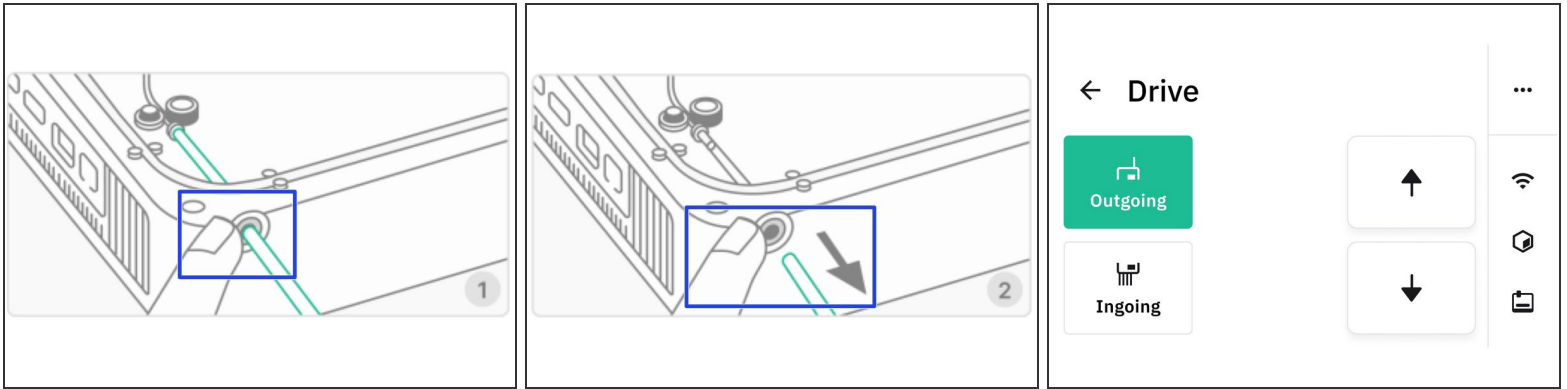


Cancel

Cut

- To cut filament, tap on the 3 dots in the corner of the *Controls* screen.
- Then tap *Cut Filament > Cut*

Step 5 — Removing Filament from Outgoing Drive



- Once the filament is cut it can be cleared from the splice core, remove the outgoing tube to pull the filament slowly from the output.
- To remove the outgoing tube, hold the collet in place and gently pull on the tube.
- Alternatively, go to *Controls > Drive > Outgoing* to control the outgoing drive motor to push the remaining filament out.

If you have any additional questions, please send us a message at support@mosaicmfg.com!