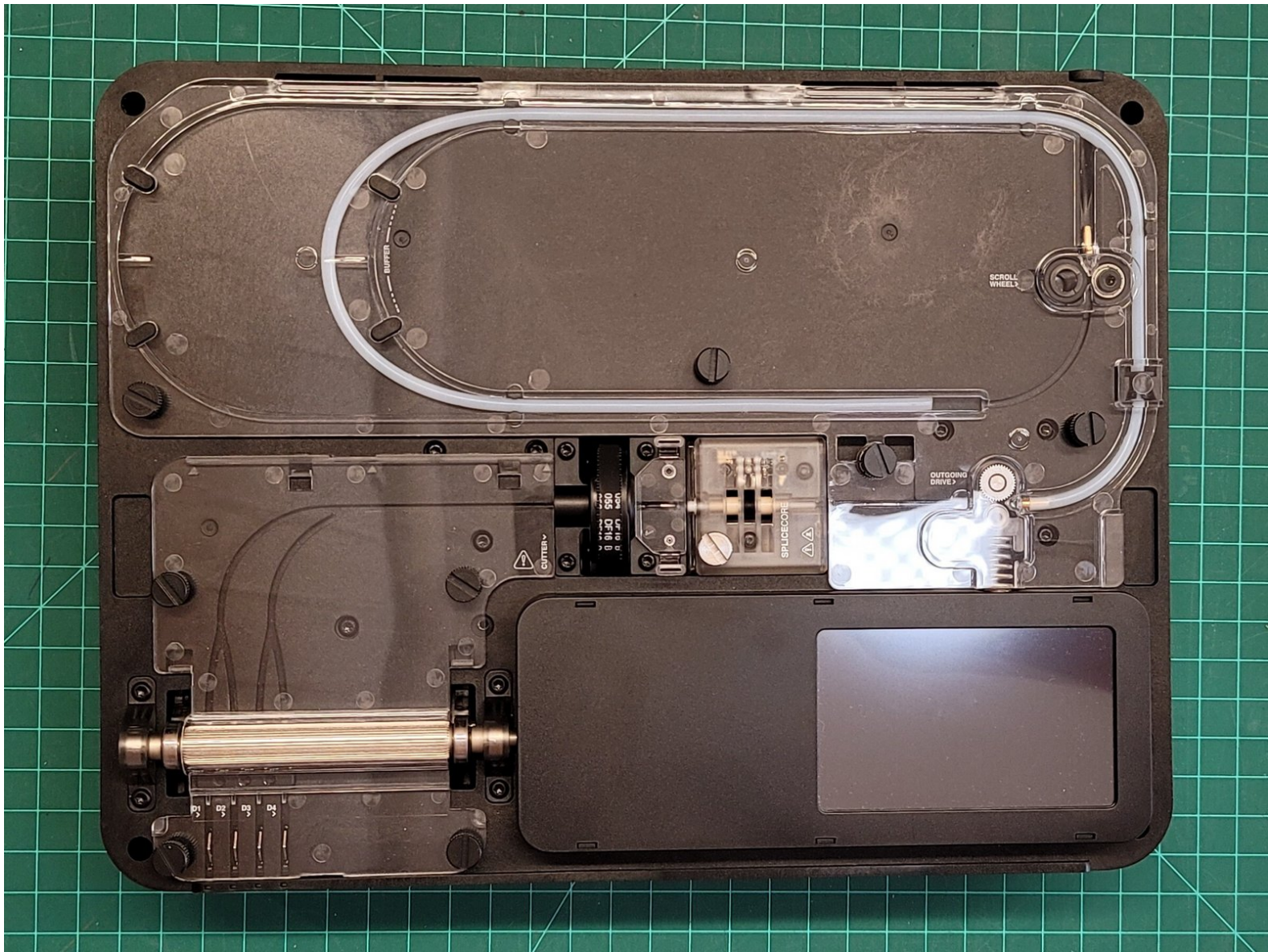




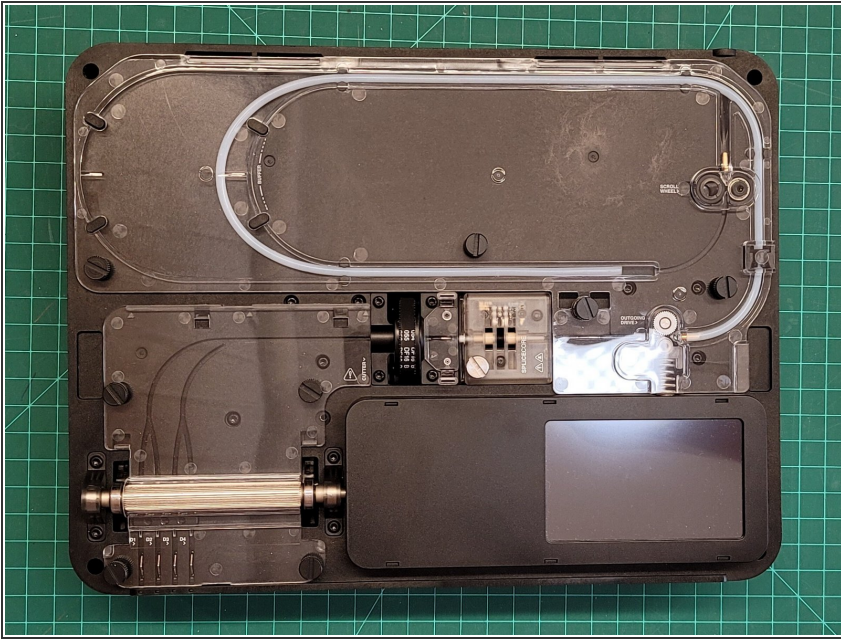
# Replacing P3's Splice Tube

How to replace Palette 3's splice tube.

Written By: Jonny Yeu

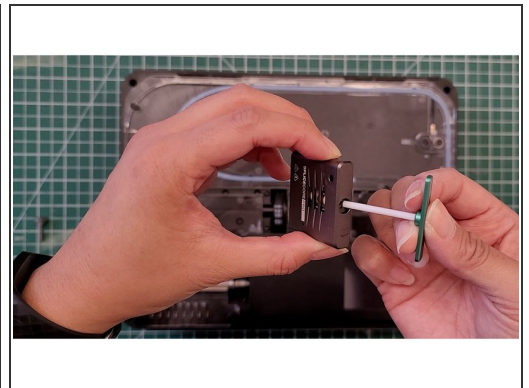
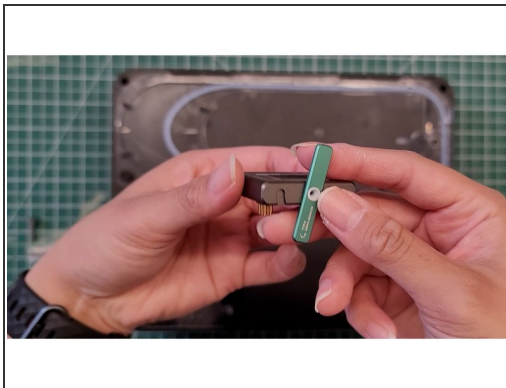
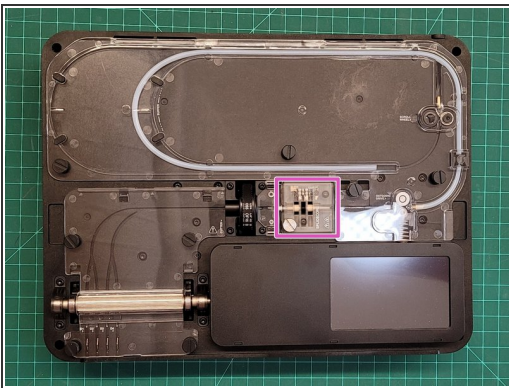


## Step 1 — Access Splice Core



- Remove Palette's top lid.

## Step 2 — Replacing the splice tube



- Remove the Splice Core's thumbscrew and remove the Splice Core.
- Turn the tab on the Splice Core to pull out the splice tube. Push the old splice tube through the tab.
- Insert the new splice tube into the tab. Holding the tab, push the new splice tube back into the Splice Core

### Step 3 — Replace Splice Core



- Replace the Splice Core and fasten its thumbscrew.
- Replace the acrylic cover, thumbscrews, and top lid.

### Step 4 — Reset Tube Counter

#### Reset Tube Counter

Current Usage: 68%  
(15870/35000 splices).

When you are ready to reset  
the counter to 0, press Reset.



Cancel

Reset

- On Palette's Menu go to *Settings > About > Splice Core > Reset Tube Counter*.
- Proceed with the reset to bring the splice count for this tube back to 0.