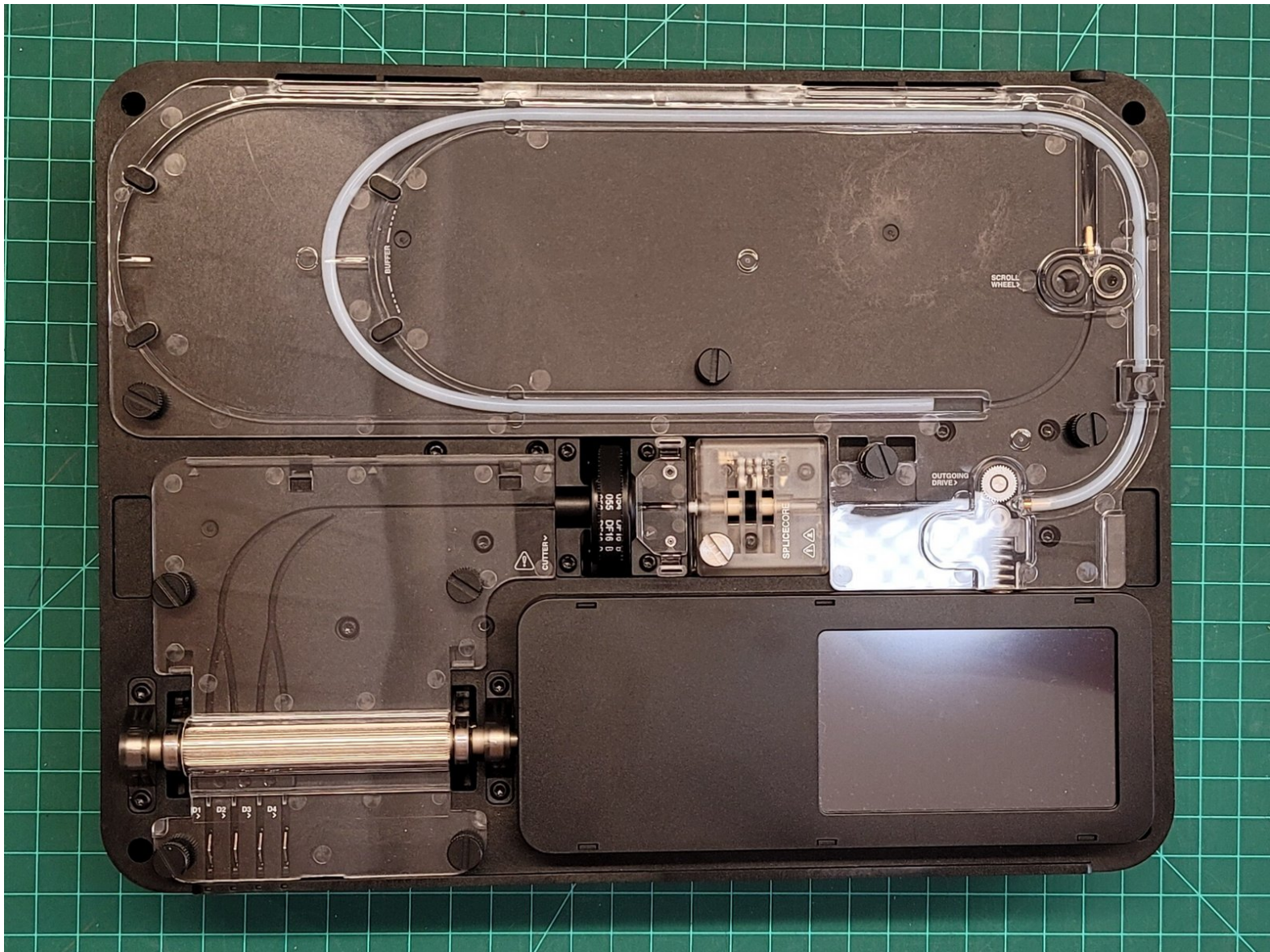




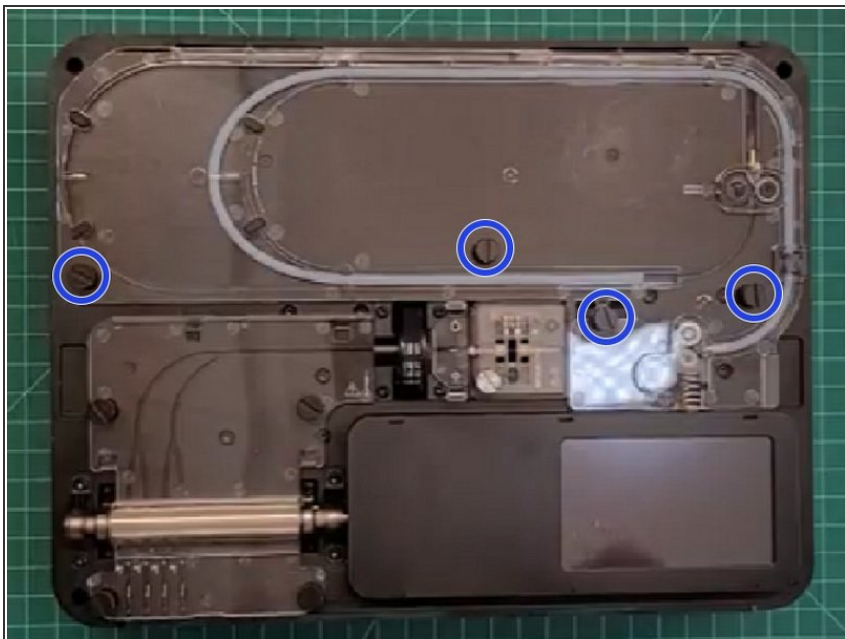
# Replacing the Buffer Tube

Guide on how to replace Palette 3's buffer PTFE tubing.

Written By: Jonny Yeu

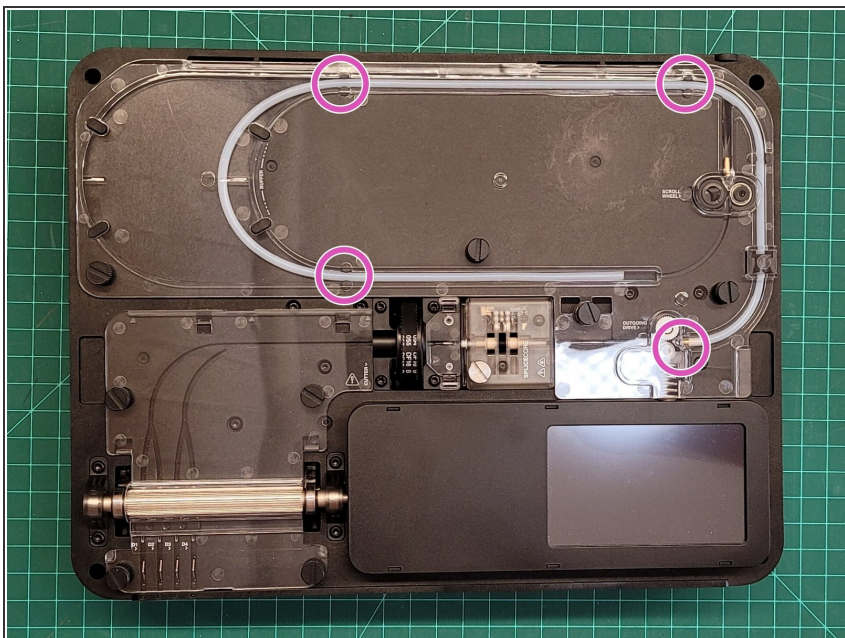


## Step 1 — Access buffer tubing



- Remove Palette's top lid.
- Remove the 4 thumbscrews from the buffer area and remove the acrylic cover.

## Step 2 — Remove buffer tube



- Remove the PTFE tube from fasteners and lift the collet before removing the entire buffer tube along with the brass retainer.



### Step 3 — Re-install buffer tube



- Install the collet onto the new PTFE tube and then the brass retainer.
- Place the brass retainer end into the gap by the outgoing drive. Reinstall the collet and slowly re-align the tube into the grooved and fastened areas. Snap the tube back into place, following along the buffer area and towards the scroll wheel.
- Replace the acrylic cover, thumbscrews, and top lid.