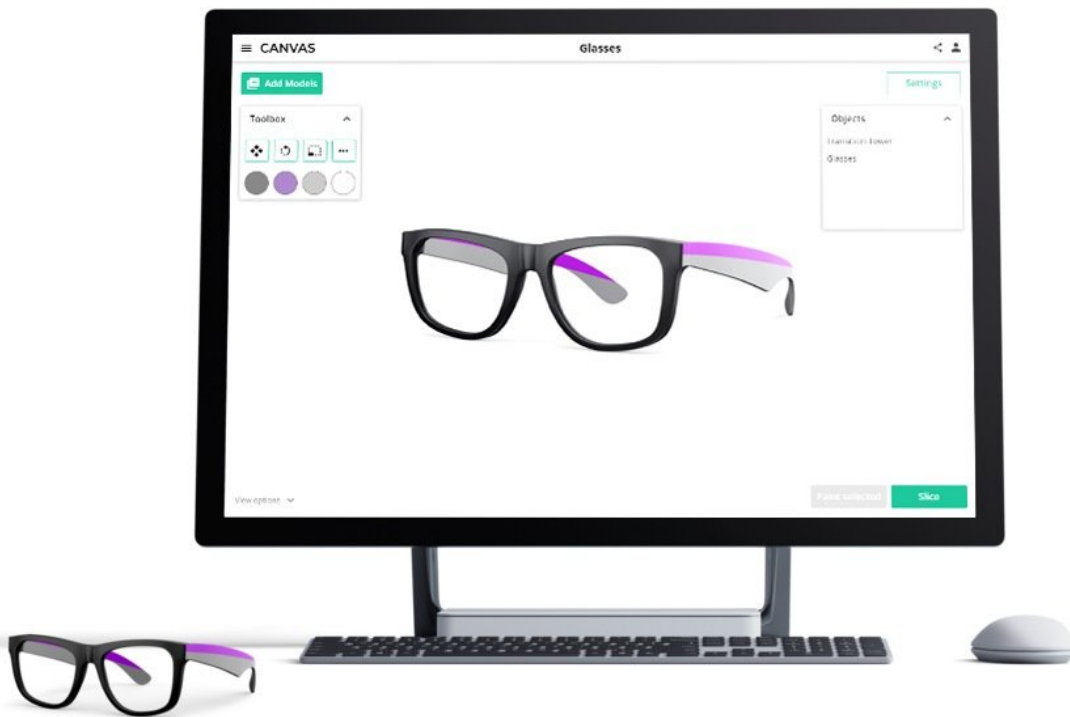




# Getting Started with Setups

Written By: Mosaic Support



## INTRODUCTION

With Setups, you can manage your printing devices through [Canvas](#). Control your Palette, 3D printer, and Canvas Hub connections directly from Canvas. You can now slice and start your prints all from the same application.

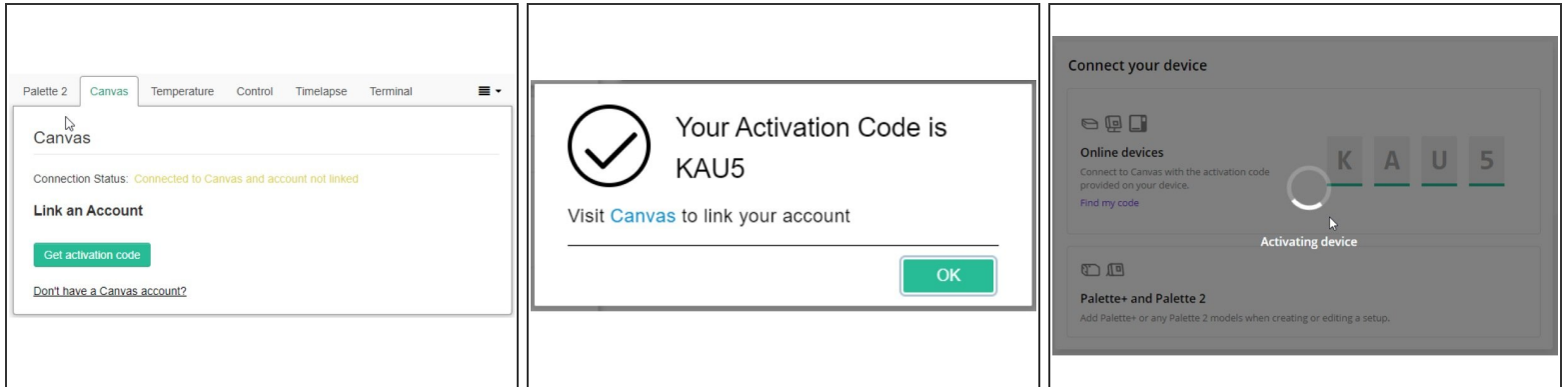
Connections to control your printer and Palette 2S (Pro) are enabled by Canvas Hub (S), or your own Raspberry Pi (DIY Hub, OctoPi). Palette 3 can also be controlled if it is connected to WiFi.

## Step 1 — Canvas Hub: Update Canvas and Palette 2 Plugins in OctoPrint



- To use Setups in Canvas, please first have [Canvas Hub](#), [Canvas Hub S](#) or a [DIY Hub](#) connected to your home/local Wi-Fi network.
- [Canvas \(v3.0.0\)](#) and [Palette 2 \(v3.0.0\)](#) plugins have been updated to enable controls directly from Canvas.
- Start OctoPrint by visiting the [IP address](#) for the device, or use the serial number URL (e.g. xxxx-ch-canvas-hub.local/, where xxxx is the serial number) to update these plugins (under Software Update), and then restart OctoPrint to allow the changes to take effect.
- In Octoprint, go to *Settings > Plugin Manager > Get More by URL* and use the links below to update. To update the plugins, right click the links below to copy link address.
- Canvas: <https://gitlab.com/mosaic-mfg/canvas-plu...>
- Palette: <https://gitlab.com/mosaic-mfg/palette-2-...>
- Please see release notes [here](#).

## Step 2 — Canvas Hub: Connect Device to Canvas



- After the Canvas plugin has been updated on OctoPrint, **click on the Canvas tab.**
- **Click "Get activation code"** and visit [Canvas](#) to enter the code.
- ❗ The entered code links your Canvas account, and adds the Canvas Hub (S)/DIY Hub to Canvas.
- ❗ [View Devices in Canvas.](#) A device that is linked but offline will be indicated with a yellow light. A device that is linked and online will be indicated with a green light.
- Please see device troubleshooting [here](#).

### Step 3 — Canvas Hub: Start Print



- Once the printer connection is established, pre-heat the printer and move the axes to prepare for printing.
- [Visit Projects](#) to slice a new project with the setup selected. After slicing is complete, the project can be sent to the setup directly. This transfers the file to the Canvas Hub (S)/DIY Hub storage.
- Return to the setup to start the print. The loading procedure has remained the same for Palette, please start the print from Palette's screen once loading is complete. For an overview of starting a print, please see [here](#).
- ❗ Connected mode smart-loading, ping and pong logs are still available through Palette's screen and OctoPrint.
- Please see [here](#) for more on devices and switching between single-color printing and Palette printing with the same setup.

If you have any additional questions, please send us a message at [support@mosaicmfg.com](mailto:support@mosaicmfg.com)