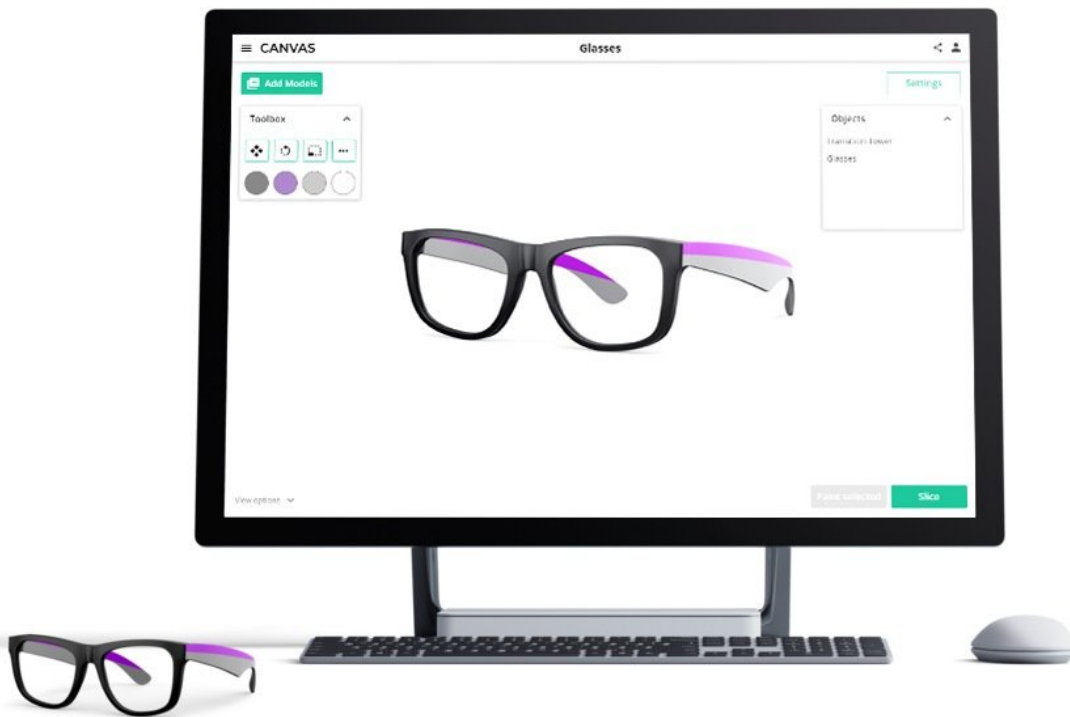




Getting Started with Setups

Written By: Mosaic Support



INTRODUCTION

With Setups, you can manage all of your printing devices through [Canvas](#). Control your Palette, 3D printer, and Canvas Hub connections directly from Canvas. You can now slice and start your prints all from the same application.

Canvas Setups are a set of configurations you have available to print with. You can create multiple setups to represent your real life printing space.

The following guide is intended for those interested in getting started with Setups for Palette 2 printing.

Connections to control your printer and Palette 2S (Pro) are enabled by Canvas Hub (S), or your own Raspberry Pi (DIY Hub, OctoPi).

To learn more about what devices are and how they're used in setups, please see [here](#).

To prepare for using Setups, please ensure that the following is completed before proceeding with the steps below:

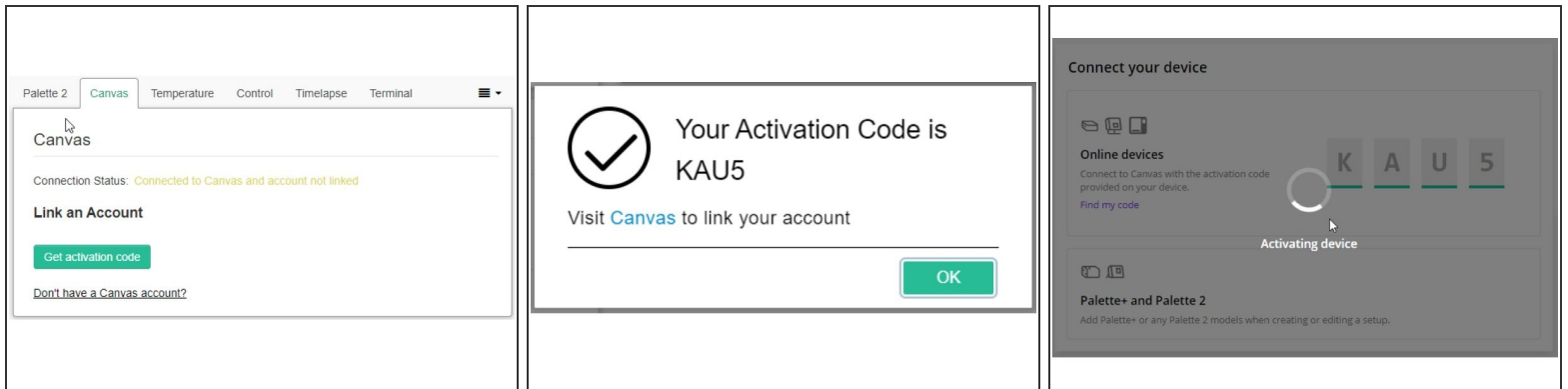
1. Create an account on [Canvas](#) to get started.
2. [Add or create a printer profile](#).
3. Have Canvas Hub, Canvas Hub S or a DIY Hub already set up and connected to a Wi-Fi network.

Step 1 — Update Canvas and Palette 2 Plugins in OctoPrint



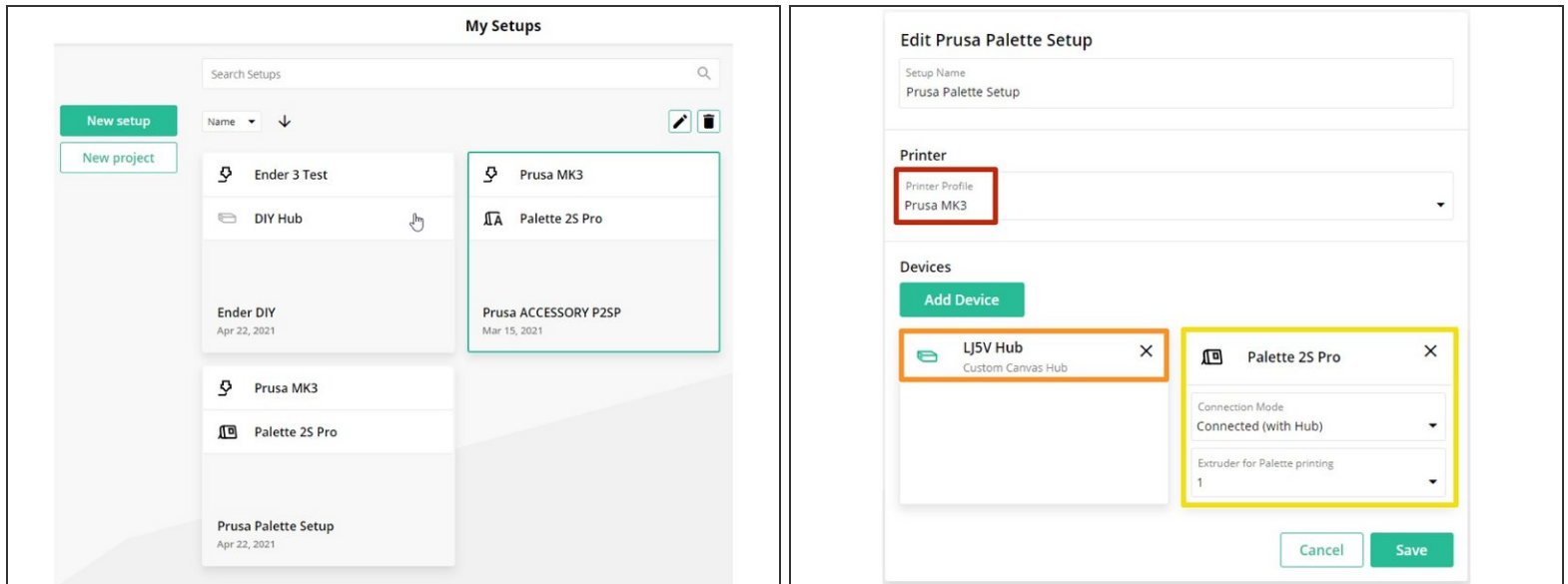
- To use Setups in Canvas, please first have [Canvas Hub](#), [Canvas Hub S](#) or a [DIY Hub](#) connected to your home/local Wi-Fi network.
- [Canvas \(v3.0.0\)](#) and [Palette 2 \(v3.0.0\)](#) plugins have been updated to enable controls directly from Canvas.
- Start OctoPrint by visiting the [IP address](#) for the device, or use the serial number URL (e.g. xxxx-ch-canvas-hub.local/, where xxxx is the serial number) to update these plugins (under Software Update), and then restart OctoPrint to allow the changes to take effect.
- In Octoprint, go to *Settings > Plugin Manager > Get More by URL* and use the links below to update. To update the plugins, right click the links below to copy link address.
- Canvas: <https://gitlab.com/mosaic-mfg/canvas-plu...>
- Palette: <https://gitlab.com/mosaic-mfg/palette-2-...>
- Please see release notes [here](#).

Step 2 — Connect Device to Canvas



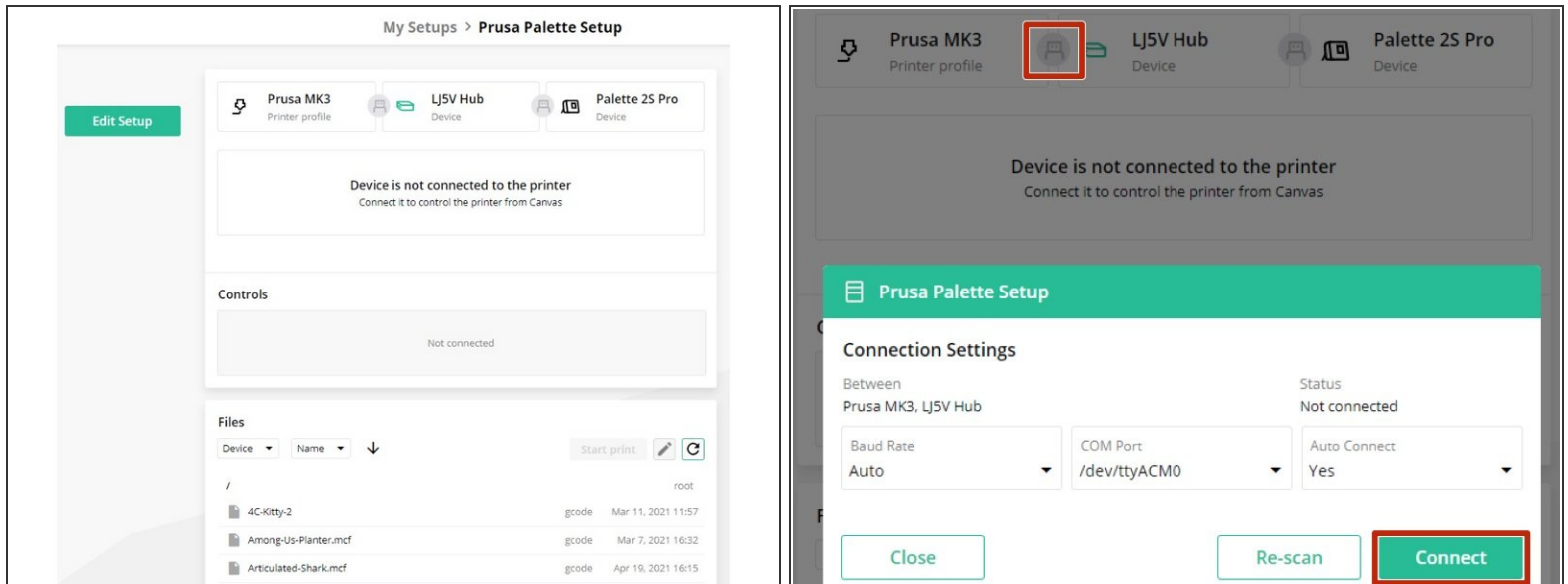
- After the Canvas plugin has been updated on OctoPrint, **click on the Canvas tab.**
- **Click "Get activation code"** and visit [Canvas](#) to enter the code.
- ❗ The entered code links your Canvas account, and adds the Canvas Hub (S)/DIY Hub to Canvas.
- ❗ [View Devices in Canvas.](#) A device that is linked but offline will be indicated with a yellow light. A device that is linked and online will be indicated with a green light.
- Please see device troubleshooting [here](#).

Step 3 — Create a New Setup



- [Visit Setups](#) and click "New setup."
- Name the setup, and **add your printer profile.**
- **Add the Canvas Hub (S)/DIY Hub device**, that was linked in the previous step.
- If applicable, **add the Palette model** (check that it is added in Connected mode).
- **Save setup.**

Step 4 — Setup Controls



- From the [Setups](#) screen, **double click on the newly created setup** to view controls.
- ⓘ Check that the USB cables from the printer and Palette are plugged into Canvas Hub (S)/DIY Hub.
- **Click the USB icon(s) for the printer and Palette to select a port connection.**
- ⓘ *Note:* If the USB icons are not visible, click the down arrow next to the Canvas Hub (S)/DIY Hub device to **activate the setup**.
- Once a connection to the printer or Palette is established, the USB icon(s) will change to green.
- Please see [here](#) for connection troubleshooting.

Step 5 — Start Print



- Once the printer connection is established, pre-heat the printer and move the axes to prepare for printing.
- [Visit Projects](#) to slice a new project with the setup selected. After slicing is complete, the project can be sent to the setup directly. This transfers the file to the Canvas Hub (S)/DIY Hub storage.
- [Return to the setup](#) to start the print. The loading procedure has remained the same for Palette, please start the print from Palette's screen once loading is complete. For an overview of starting a print, please see [here](#).
- ❗ Connected mode smart-loading, ping and pong logs are still available through Palette's screen and OctoPrint.
- Please see [here](#) for more on devices and switching between single-color printing and Palette printing with the same setup.

If you have any additional questions, please send us a message at support@mosaicmfg.com