



# SD Card Issues

When running an Accessory print, you'll load MAF print files to your Palette's SD card. If you're unable to read your SD card, please follow these steps.

Written By: Mosaic Support



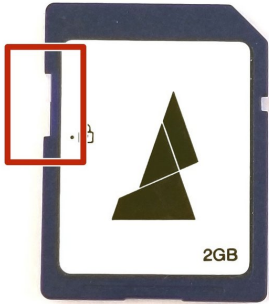
**TOOLS:**

- [Torx Screwdriver](#) (1)

**PARTS:**

- [SD Card](#) (1)

## Step 1 — Card Orientation



- Please note the orientation of the SD card when inserting into Palette. When you're looking at Palette's screen, the Mosaic Logo should be facing you when inserting into your Palette. Please also check that the lock is off.

## Step 2 — Corrupt files



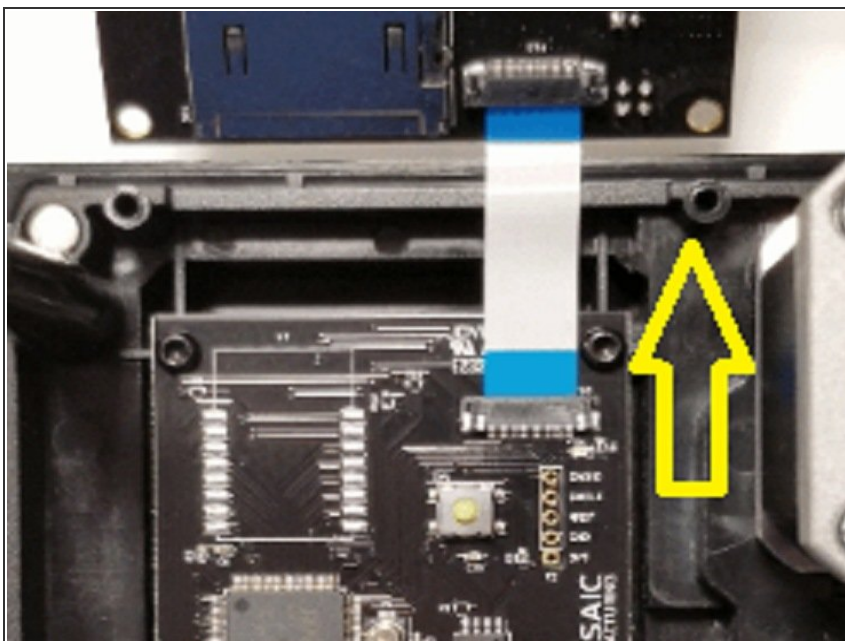
- We also want to check that the MAF file was processed and transferred correctly. Please re-slice and download the MAF file to your SD card and try to load it to your Palette 2.

### Step 3 — Format Card



- To check if this is an SD card issue, please re-format your card and reload the files. Please also check the MAF file on other SD cards.

### Step 4 — Electronics tray



- If you're still not able to read the files properly, we can check the connection of the SD card reader to the electronics tray as a last resort. Please follow [these steps](#) to remove Palette's bottom casing and access the electronics board. Unscrew the top electronics board to access the blue ribbon that you see in the picture below.

- 
- We want to test the connection of this ribbon, so please pull this ribbon up and out, then replace it to see if this helps with the SD card issue.
- 

If you have any additional questions, please send us a message at [support@mosaicmfg.com](mailto:support@mosaicmfg.com).