



Connected Mode Calibration Print

This article is part of our first print instructions, for those who are using Palette in Connected Mode (with a Hub).

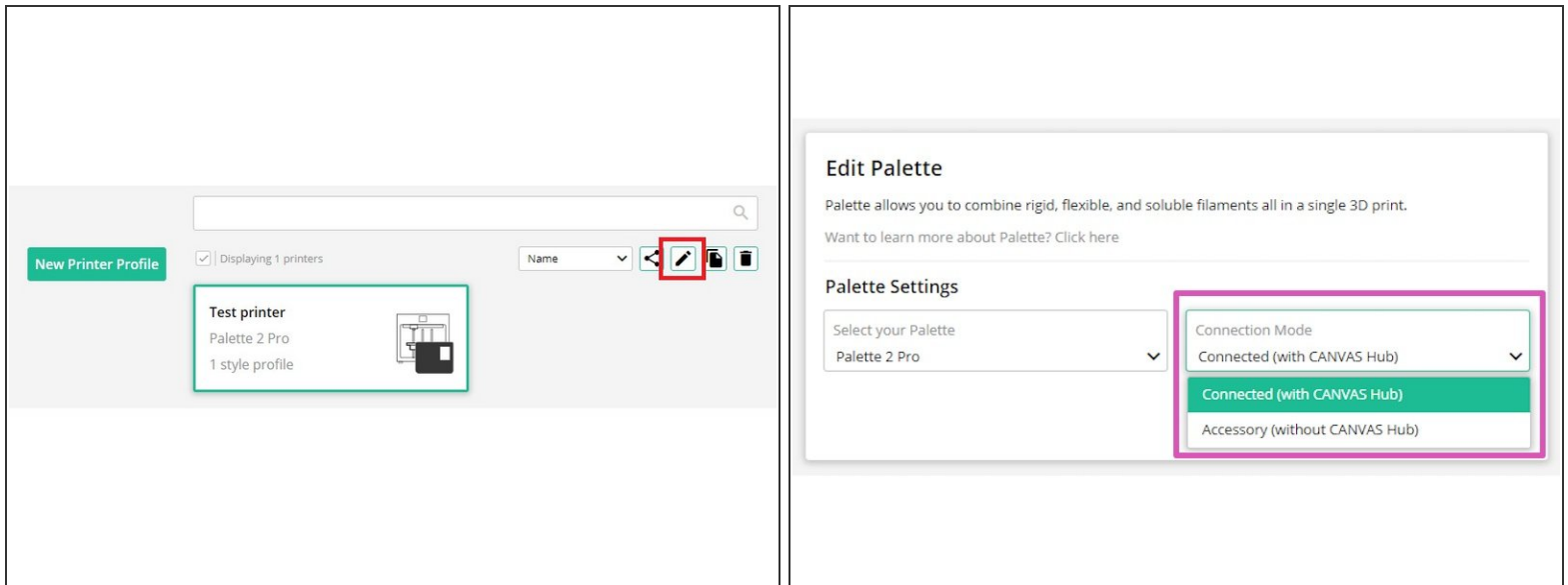
Written By: Mosaic Support



INTRODUCTION

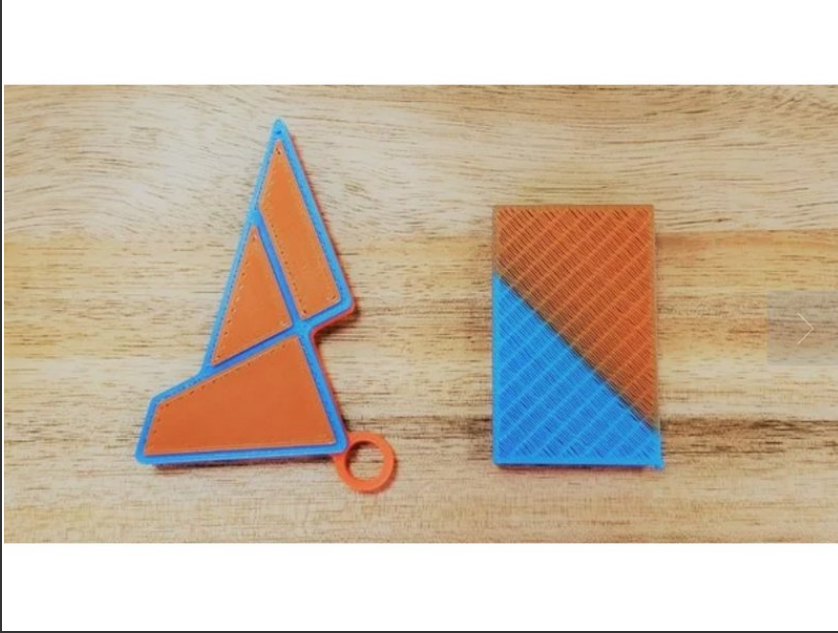
This article is part of our [first print instructions](#), for those who are using Palette in Connected Mode (with a Hub).

Step 1 — Set Up Your Printer Profile



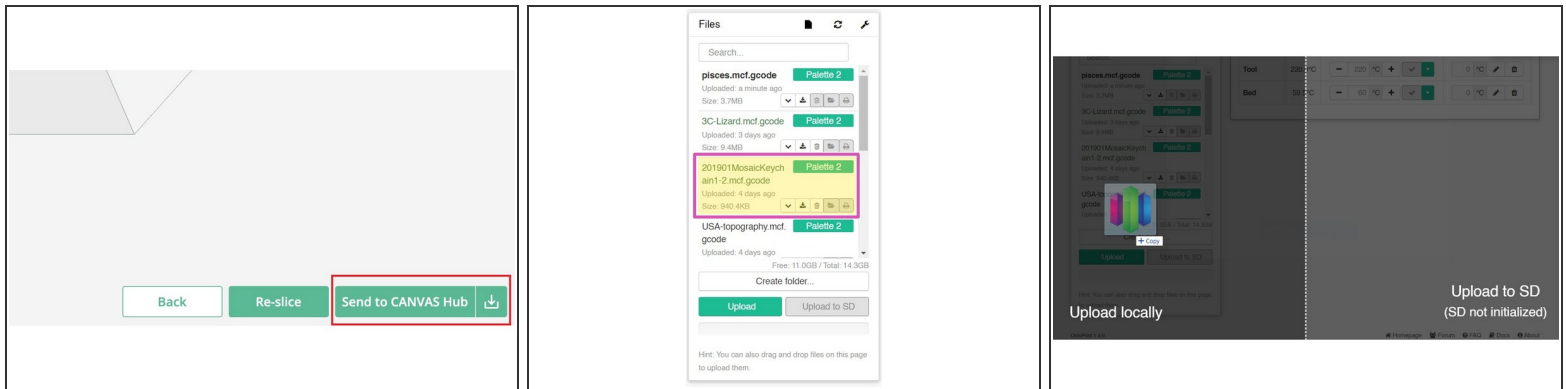
- First, set up your [CANVAS Hub](#) or your [CANVAS Hub S](#).
- In [CANVAS](#), open your Palette Profile by first selecting the menu button (located at the top-left of the CANVAS homepage), then select Printer Profiles.
- Select the printer profile, then select **Edit (pencil icon)**.
- Select **Edit Palette**. Ensure that your Palette is set to Connected on the dropdown menu. Press **Save**.

Step 2 — Slice Your Calibration Keychain



- Slice [this calibration keychain](#) in CANVAS, or [use Chroma](#) if you'd like to use Simplify3D, Cura, KISSlicer, Slic3r/PrusaSlicer as your slicer.
- Colour the model by dragging and dropping your colour onto the STL filenames. For a tutorial on how to prepare a file in CANVAS, [please see here](#).
- Please do not resize the keychain or use the Paint feature.
- Use a transition tower, do not use side-transitioning.

Step 3 — Send Your File to the Hub



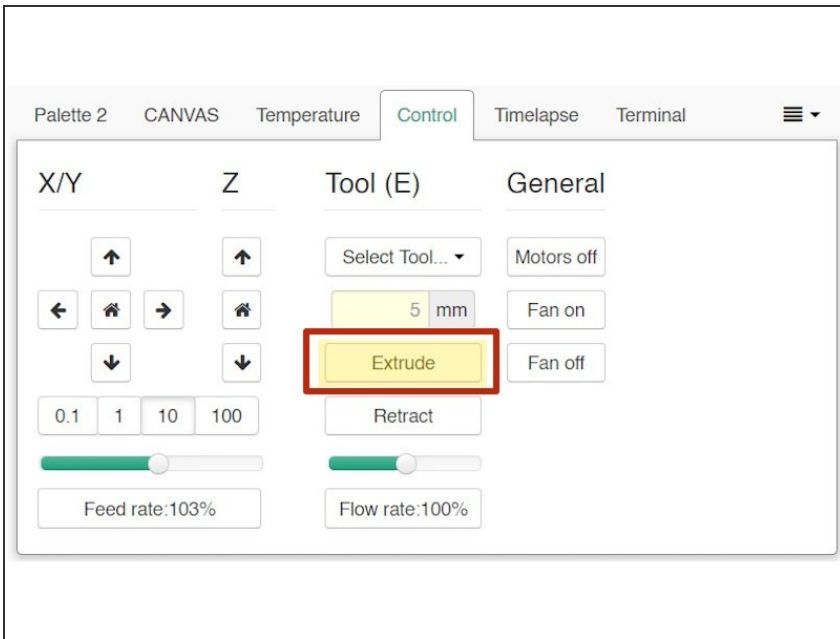
- After your file has been sliced, select the **Send to CANVAS Hub** option. Once selected, return to your CANVAS Hub interface to see that the file has been sent to your Hub.
 - Once the files have been received, it will appear in the **Files** section. Any multi-color/material prints will have a Palette icon attached.
 - If you have downloaded files that you'd like to add to your CANVAS Hub interface, simply drag and drop the files into your browser.
- i** Please note: drop the files on the **Upload Locally** side.

Step 4 — Start Your Print



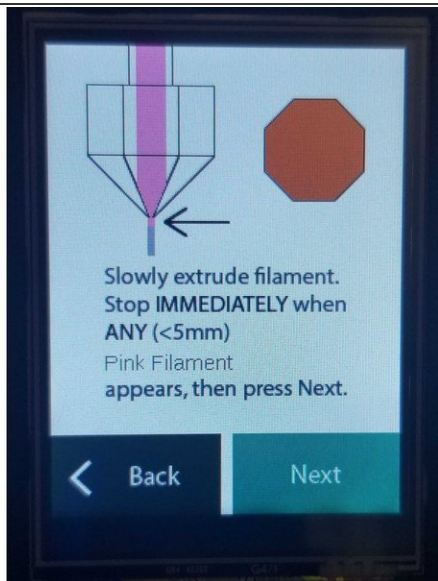
- Once your files are uploaded, click the printer icon under your file name to load the print.
- Click **Print** from the State box. CANVAS Hub's interface will acknowledge that a print will begin with Palette. Select **OK** and Palette will begin initializing while your printer is paused.
- Follow the on-screen instructions to load filament into Palette 2. Palette and CANVAS Hub will prompt you to then pre-heat your printer.
- Within the CANVAS Hub interface, set the bed and extruder temperatures in the **Temperature** tab.

Step 5 — Prime Your Nozzle



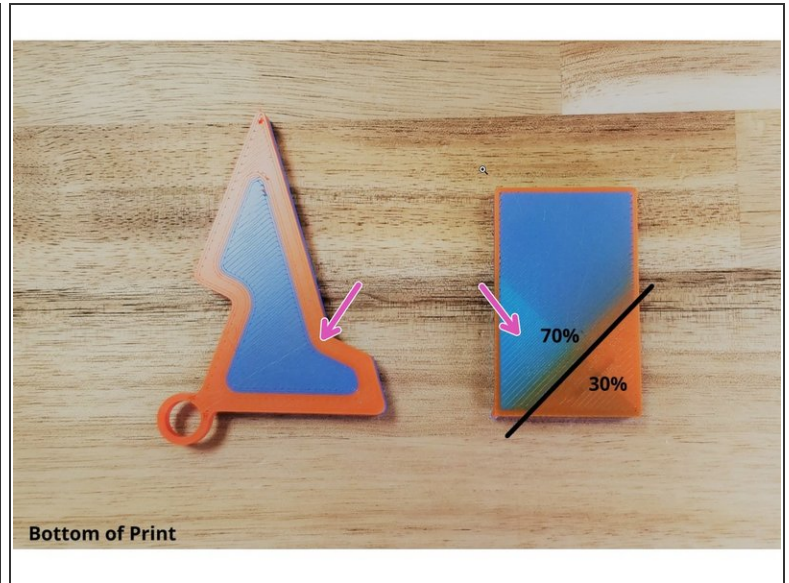
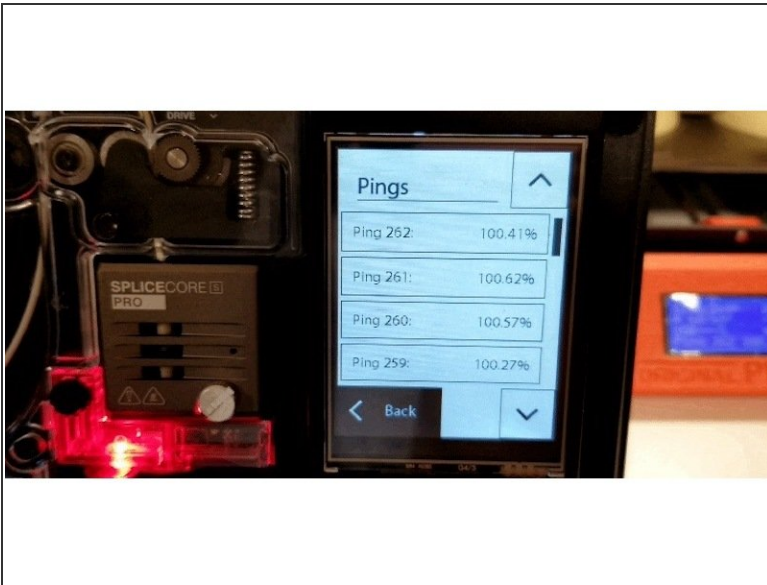
- Once pre-heated, continue following Palette's on-screen instructions to load 5-10 cm of clear or white filament into your printer's extruder.
- ❗ This is not filament from Palette, but a separate piece of filament to prime the nozzle. Please make sure that the filament you will be loading into Palette is not clear or white. This will help purge any residue or leftover filament from the previous print, and make it easier to see the color transition from the nozzle.
- On CANVAS Hub's interface, switch to the **Control** tab to manually extrude filament from your printer.

Step 6 — Stop Loading at Color Change



- Palette will now have created enough filament to load into your printer's extruder. Use the **Extrude** function again so that the filament is gripped by your extruder's gears. Clip the Teflon tubing into your Teflon tube clip.
 - You'll be instructed to slowly extrude filament until you see a new color appear from the extruder. Using the **Extrude** function, slowly jog filament until the color change occurs. You can adjust the amount and speed to ensure a precise loading of filament.
- ⚠ Stop extruding as soon as you see any hint of the filament from Palette appear, and confirm loading is complete on Palette's screen by selecting **Next**.
- When you select **Start Print** both Palette and your printer will begin the print.

Step 7 — Check Your Pings and Evaluate First Print



- Once your print has started, please [check your ping data](#) and if possible, take a photo. If anything goes wrong during the print, this data will help us diagnose the issue. If you'd like to learn more about pings and what they mean, check out this [article](#).
- The print is considered successful if 1) the bottom of the **keychain print has clearly defined colored regions**. 2) the **bottom of the transition tower also has a clear color change**.
- Please see here for more details on how to [evaluate the first print](#).

Step 8 — Continue Tuning the Printer Profile



- On Palette, printer profiles can be viewed under *Settings > Preferences > Printer Profiles*. After completing the keychain you should have an [LO \(loading offset\)](#) and [HM \(historical modifier\)](#) saved.
- To continue tuning the printer profile, print small to medium sized models that have at least 15 pings after slicing. After the print completes, [save or ignore the print data](#) to tune the HM, which is the average of pings over time.
- [Palette uses machine learning](#) using [ping data](#) from each print, to get better with every print.

If you have any additional questions, please send us a message at support@mosaicmfg.com.