



Setting up Palette+ with your Robo R2

This guide will take you through setting up Palette+ on your Robo R2.

Written By: Mosaic Support

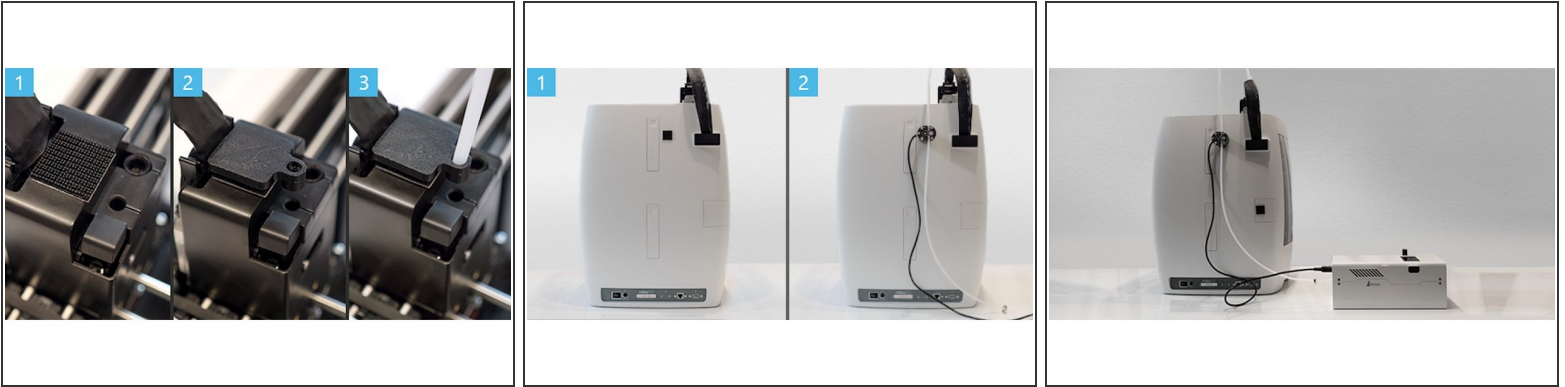
Palette / Palette+



INTRODUCTION

To set up your Palette+ with your Robo R2, download Mosaic [Chroma](#) software. Chroma will walk you through the following steps.

Step 1 — Setup



- Position the guide tube clip.
- Position the scroll wheel.
- Position Palette+ next to your R2.

Step 2 — Calibrate and Slice



- [Simplify3D tutorial](#)
- [Simplify3D factory file](#)
- [Multi-color print ideas](#)

If you have any questions, please contact us at support@mosaicmfg.com.