



# Accessory Mode Calibration Print

This article is part of our first print instructions for those who are using Palette in Accessory Mode.

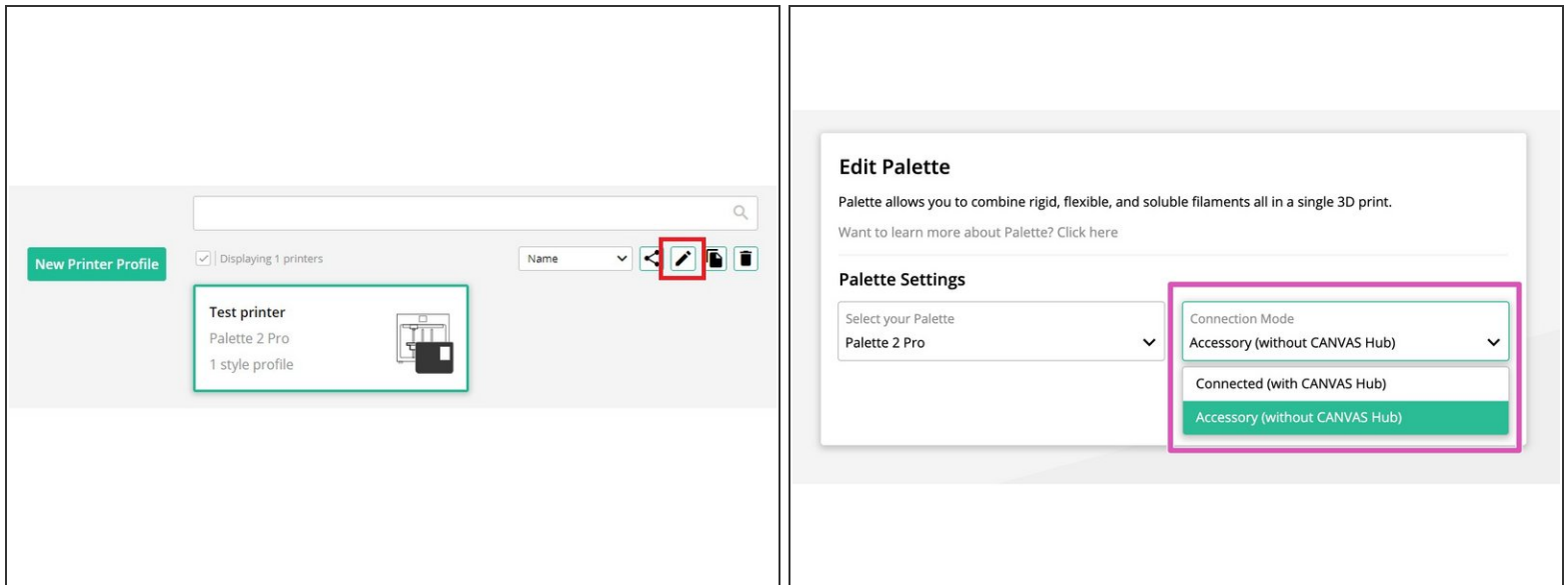
Written By: Mosaic Support



## INTRODUCTION

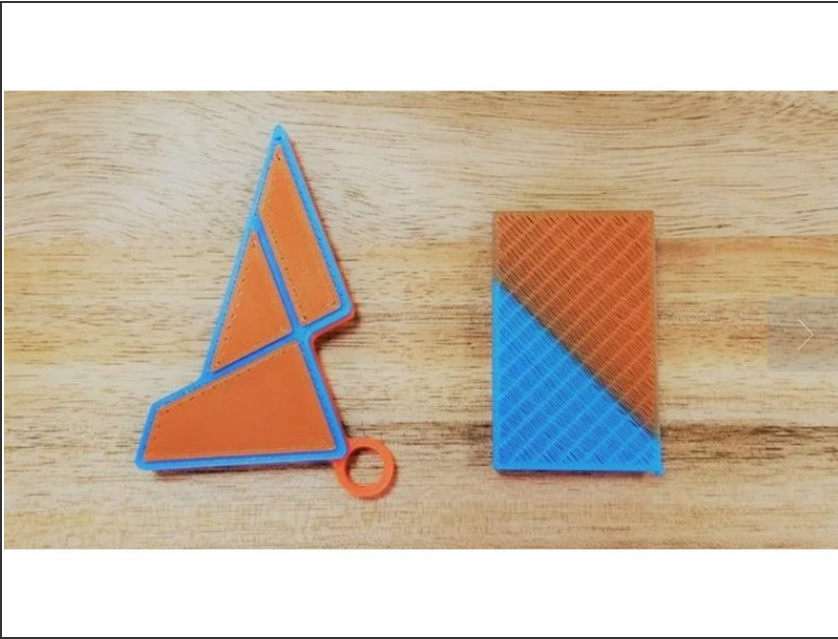
This article is part of our [first print instructions](#) for those who are using Palette in Accessory Mode.

## Step 1 — Create a Printer Profile



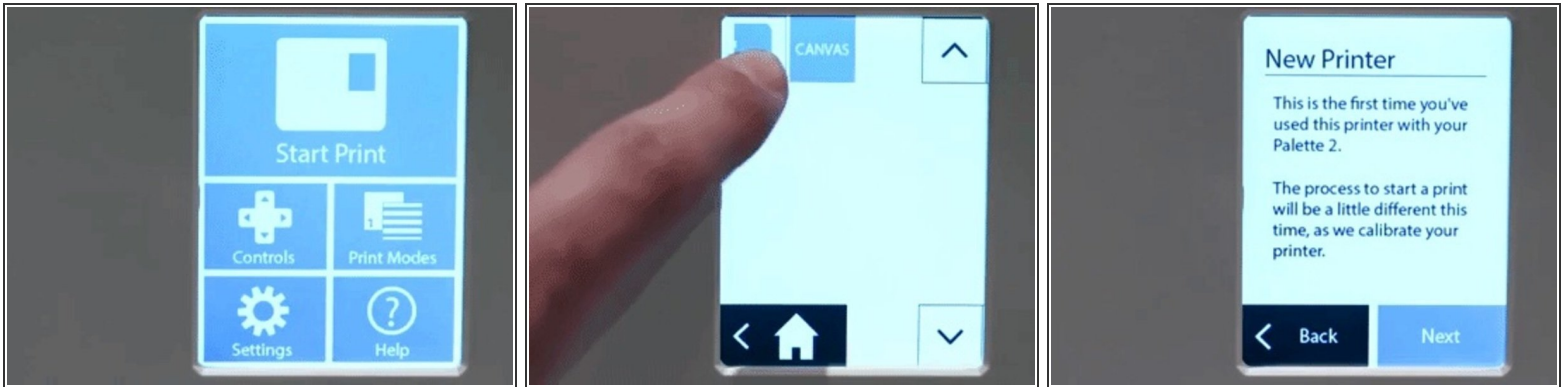
- In [CANVAS](#), open your Palette Profile by first selecting the menu button (located at the top-left of the CANVAS homepage), then select **Printer Profiles**.
- Select the printer profile, then select **Edit (pencil icon)**.
- Select **Edit Palette**. Ensure that your Palette is set to Accessory on the dropdown menu. Press **Save**.

## Step 2 — Slice the Calibration Keychain



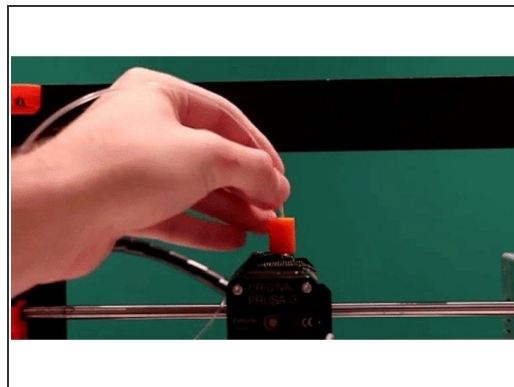
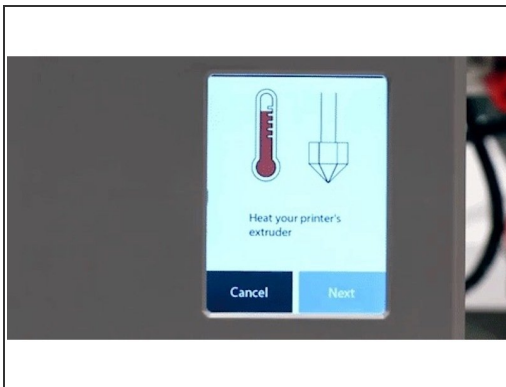
- Slice [this calibration keychain](#) in CANVAS or [use Chroma](#) if you'd like to use Simplify3D, Cura, KISSlicer, Slic3r/PrusaSlicer instead of CANVAS.
  - Colour the model by dragging and dropping your colour onto the STL filenames. For a tutorial on how to prepare a file in CANVAS, please see [here](#).
  - Please do not resize the keychain or use the Paint feature.
  - Use a transition tower, do not use side-transitioning or other transitioning method.
- ❗ After slicing in CANVAS is complete you will have two files. The first is a MAF file that is meant for Palette. You'll also receive a modified GCode file for your printer. Transfer the MAF to Palette's SD card and then transfer the modified GCode file to your printer.

## Step 3 — Load Your File



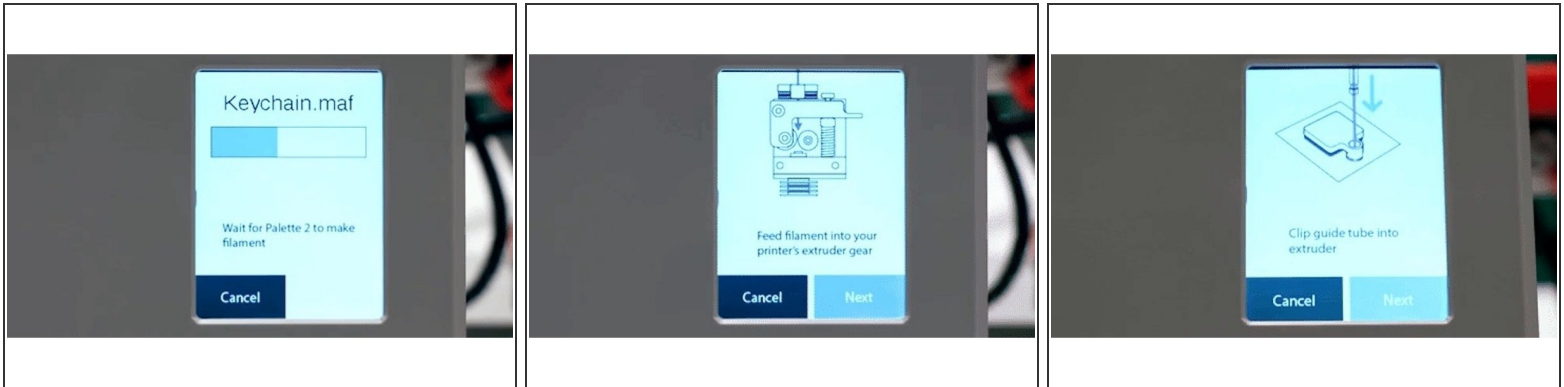
- Turn on Palette and select **Start Print**.
- On the top left corner of the screen, you can select to load a file from Palette's SD card (MAF file).
- Palette will recognize that this first time you have used it with this printer and will be really excited and let you know before you start the print. Please go ahead and tap **Next**.

## Step 4 — Prime Your Nozzle



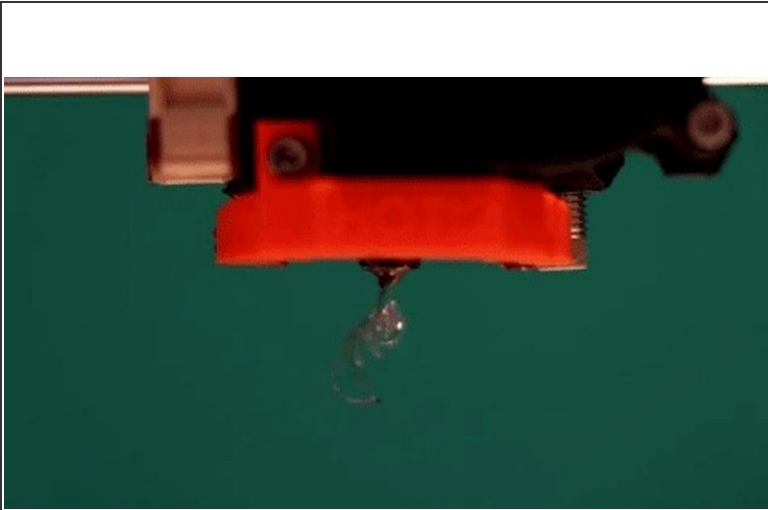
- Follow the on screen instructions to clear filament from the outgoing tube and to load filament into the inputs.
  - Pre-heat your printer's extruder.
  - Load 5-10 cm of clear or white filament into your printer's extruder. This is not filament from Palette, but a separate piece of filament to prime the nozzle.
- i** Please make sure that the filament you will be loading into Palette is not clear or white. This will help purge any residue or leftover filament from the previous print, and make it easier to see the color transition from the nozzle.

## Step 5 — Attach Your Tube Clip



- Palette will begin to create filament, and you will see it pass through the output and through the Teflon tubing.
- Palette will create enough filament so that an additional 6-8 cm (2-3 inches) will stick out from the tubing. You can then feed this filament into your printer's extruder. The goal is to ensure that the gears are gripping the filament, so only a few millimetres will need to be loaded.
- With the Teflon tubing connected, attach the Teflon tube clip to your printer's extruder using the provided Velcro squares. For variations of the Teflon Tube clip (including the MK3 one seen in the video), see [here](#).

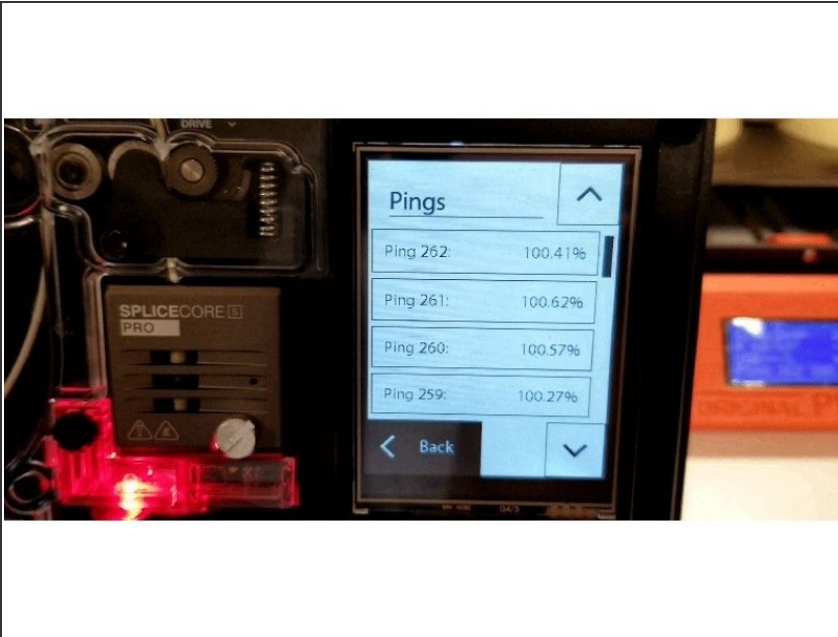
## Step 6 — Calibrate Your Loading Offset



**!** Jog the filament through your extruder until the new colour appears. The clear filament you loaded previously will eventually change to the colour from Input 1. Stop extruding as soon as you see any hint of the filament from Input 1 appear, and confirm loading is complete on Palette's screen by selecting **Next**.

- When you're ready to start the print on your printer, select **Finished**. Please don't use an auto-loading function, as this step requires manual extrusion.
- Start the GCode file from your printer's screen/controls. Once the print has started you will see a status screen displaying the time progress, splices completed, and total length of filament for the print.

## Step 7 — Get Your Ping Data



- Once your print has started, please [check your ping data](#) and if possible, take a photo. If anything goes wrong during the print, this data will help us diagnose the issue. If you'd like to learn more about pings and what they mean, check out [this article](#).
- Once the print is completed, Palette's screen will confirm the print's completion. Tap **Finished** to end and Palette will record the calibration values for your specific printer.
- After your print is finished, you may refer back to the [first print instructions](#) and follow the next step to [evaluate the first print](#).

If you have any additional questions, please send us a message at [support@mosaicmfg.com](mailto:support@mosaicmfg.com).